



SIERRA LEONE 2015 POPULATION AND HOUSING CENSUS

THEMATIC REPORT ON LIFE TABLES



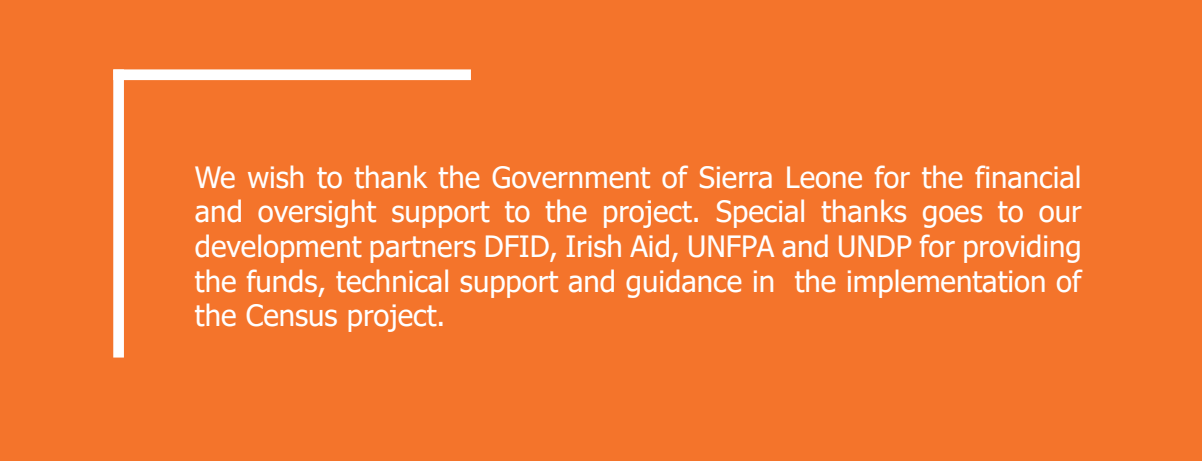
**STATISTICS SIERRA LEONE (SSL)
OCTOBER 2017**



**SIERRA LEONE 2015
POPULATION AND HOUSING CENSUS**

**THEMATIC REPORT ON
LIFE TABLES**

**BY
ISHMAEL KANU
SONNIA-MAGBA BU-BUAKEI JABBI
CLEMENTINA AKRAN**



We wish to thank the Government of Sierra Leone for the financial and oversight support to the project. Special thanks goes to our development partners DFID, Irish Aid, UNFPA and UNDP for providing the funds, technical support and guidance in the implementation of the Census project.

DISCLAIMER

Statistics Sierra Leone cannot be held responsible for errors, or any consequences arising from the use of information contained in this report. All rights reserved. This document may be freely quoted or reproduced, in part or in full, provided that the source is acknowledged.

ACKNOWLEDGEMENTS

On behalf of the Government of Sierra Leone, I wish to thank Statistics Sierra Leone, the United Nations Populations Fund and the lead writers of Statistics Sierra Leone for their contribution towards the preparation of this thematic report.

The contributions made by the following officials of Statistics Sierra Leone are acknowledged with deep gratitude. Mohamed King Koroma, former Statistician General and his top management team for the careful selection they made during my interview as the Lead Writer of the Thematic Report on Life Tables for Sierra Leone 2015.

Mohamed Fofanah, the National Consultant for his careful and objective review of my work. Particularly, I want to acknowledge the contribution of the following persons in reviewing the thematic report: Sonnia-Magba Bu-Buakei Jabbi, Principal Statistician, Demographic and Social Statistics Division, and Clementina Akran, Statistician, both with Statistics Sierra Leone.



CONTENTS

■ Acknowledgements	v
■ Abbreviations	viii
■ List of figures	viii
■ List of tables	viii
■ Executive Summary	01
■ CHAPTER 1: INTRODUCTION	03
■ 1.1. Background and context	03
■ 1.2. Data sources and limitations	03
■ 1.3. Definitions of concepts (defined indicators)	04
■ CHAPTER 2: METHODOLOGY	05
■ 2.1. Introduction	05
■ 2.2. General approach for preparation of annual life tables	05
■ 2.3. Data collection	06
■ 2.4. Estimations of life table indicators	06
2.4.1. General notation	06
2.4.2. Calculation of number of survivors and deaths in the table population	06
■ 2.5. Basic indicators	07
■ 2.6. Calculation of life expectancy	08
■ CHAPTER 3: DISCUSSION OF RESULTS	09
■ 3.1. Introduction	09
■ 3.2. Life tables for the 12-month period prior to the 2015 Population and Housing Census	09
■ 3.3. Life tables for males and females by district, 2015 Population and Housing Census	14
■ 3.4. Mortality life tables	14
■ 3.5. Life expectancy at birth by sex	14
■ 3.6. Life expectancy at age 60 by region, district and sex	18
■ 3.7. Levels and trends in life expectancy at birth	18
■ 3.8. Age-sex specific mortality rates, unadjusted, adjusted and smoothed by the Brass Growth Balance Equation method	19
3.8.1. Probability of dying between ages 15 and 59 by region and district	20



CONTENTS

■	CHAPTER 4: POLICY IMPLICATIONS	21
■	CHAPTER 5: CONCLUSIONS AND RECOMMENDATIONS	23
■	REFERENCES	25
■	GLOSSARY	27
■	APPENDICES: LIFE TABLES	28
■	ANNEX	83



LIST OF FIGURES

■ Figure 3.1 Life tables for Sierra Leone 12 months prior to the 2015 Population & Housing Census	10
■ Figure 3.2 Sierra Leone Life expectancy at birth by districts	15
■ Figure 3.3 Males life expectancy at age 60 by district	17
■ Figure 3.4 Females life expectancy at age 60 by district	17



LIST OF TABLES

■ Table 3.1 Life table at national level: Abridged life table for Sierra Leone, 2015	11
■ Table 3.2 Abridged life table for Sierra Leone males, 2015	12
■ Table 3.3 Abridged life table for Sierra Leone females, 2015	13
■ Table 3.4 Life expectancy at birth by region, district and sex	14
■ Table 3.5 Life expectancy at age 60 by region, district and sex	16
■ Table 3.6 Life expectancy at birth for Sierra Leone by sex for the two periods (2004-2015) of life tables generation	18
■ Table 3.7 Life tables for Sierra Leone (2015) showing the probability of dying at exact age	20



ABBREVIATIONS

ASFR	Age-Specific Fertility Rate
ASDR	Age-Specific Death Rate
BGBE	Brass Growth Balance Equation
CEB	Children Ever Born
EVD	Ebola Virus Disease
IMR	Infant Mortality Rate
NCR	National Civil Registration
PAS	Population Analysis Software
SSL	Statistics Sierra Leone
SDGs	Sustainable Development Goals
UN	United Nations
UNDP	United Nation Development Programme
UNFPA	United Nations Population Fund
UNICEF	United Nations Children's Fund
UNPD	United Nations Population Division
UNSD	United Nations Statistics Division
WB	World Bank
WHO	World Health Organization

EXECUTIVE SUMMARY

This report presents abridged life tables for Sierra Leone for the period 2005–2015. This period was selected since it centres the year of the last Population and Housing Census conducted in 2004. The report also provides abridged life tables for regions and districts. Calculations of life tables were done using the software package known as Population Analysis Software (PAS) developed by the US Census Bureau.

Life expectancy at birth for Sierra Leone which is interpreted as the average length of life for a person at birth is 48.3 years for males and 50.8 years for females. These figures are low compared with corresponding figures for developed countries. The female advantage in life expectancy at birth for Sierra Leone is 2.5 years which is considered low for a developing country. Precise explanations of this insignificant gender difference need further research because of the apparent simple interplay of biological, social, behavioural and health conditions.

LIFE EXPECTANCY :

48.3 MALE
50.8 FEMALE



Life expectancy at age 60

Female aged 60 in 2015 is expected to live

a further **16.9** years.

The life expectancy at age 60 has been fallen over time and a female aged 60 in 2015 is expected to live a further 16.9 years. However, the pace of decrease is low for males. Lower chances of survival in old age, coupled with the decline in fertility, will result in a decreasing population of the elderly, commonly known as population immaturity.

The analysis of district variation reveals that the life expectancy at birth is highest for Koinadugu District with life expectancy at birth of 65.1 years for males and 66.8 years for females. The Western Area Urban District revealed a life expectancy of 61.3 years and 65.1 years for males and females respectively. It reveals that the life expectancy at birth of 65.1 years for males in Koinadugu is the same as that for females in the Western Area Urban. Interestingly, these two districts are considered different in economic, social, geographical and cultural experiences. Koinodugu is a less urbanized area of Sierra Leone compared with Western Area Urban. One salient feature in the district pattern of mortality is the very low value of male life expectancy for Kailahun District (37.5 years). This could most probably be due to the deaths that occurred as a result of civil war and the outbreak of the Ebola Virus Disease before the Census was conducted.

Port Loko District too records low level of life expectancy at birth for males (37.6 years).

The probability of dying among females at 15 is almost double that of males. But the probability of dying among males at age 60 is double that of females.

Sex differentials continue to be higher among females on life expectancy at birth. The decline in mortality life tables could be attributed to programmes implemented by Ministry of Health and Sanitation. The decline however is not evenly distributed across the nation. Life expectancy at birth has increased slightly both for males and females. Life expectancy at birth often is higher for females, at 50.8 years, than males, at 48.3 years. At the regional level, life expectancy is recorded at 54.7 years for males and 58.2 years for females in the Western Area. The Northern Region recorded the second highest life expectancy at birth with 52.3 years for females and 48.9 for males. It was observed that the Eastern Region of Sierra Leone recorded the lowest life expectancy with 45.0 years for females and 43.6 years for males. However, again there are wide disparities at the district levels. The basic data came from the census and the quality is very high but the face value of the data is often questionable because of misreporting of age, deaths, etc. The sources of child and adult mortality data used to estimate the life tables for Sierra Leone were reports on surviving children and mothers.

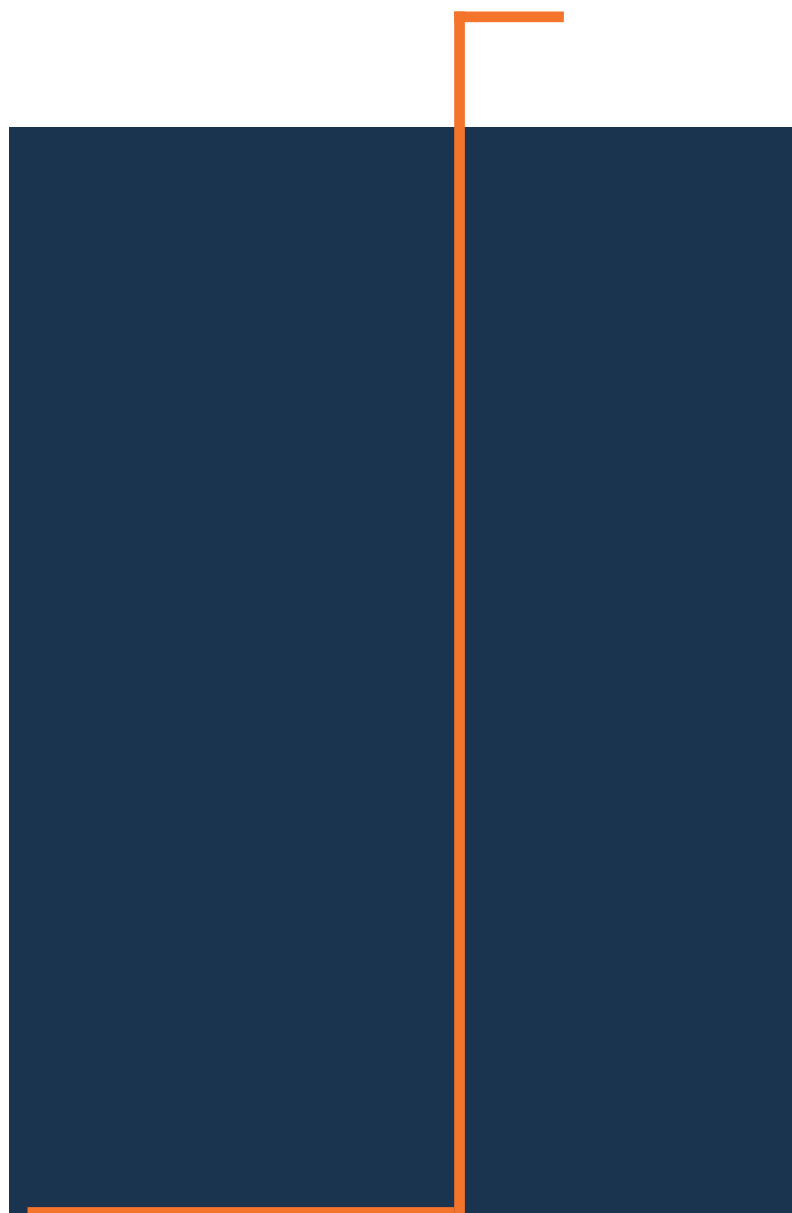
Even though the probability of dying during the first year of life often is much higher than immediate subsequent years, Sierra Leone is gradually experiencing an increase in life expectancy at birth.

Until 2015, females had a lower life expectancy than males but that seems to be changing. Female life expectancy at birth is higher than that of males by 1.9 in 2004, 2.5 years in 2015.

Sierra Leone must give more importance to the study of levels and changes of average life expectancy because it directly reflects the links between population health and social economic development. Research on life expectancy is of direct use to the social security and social health insurance systems in Sierra Leone. According to the 2015 Census, mortality in Sierra Leone is slightly higher than the subregion and global levels. Therefore, the main implication is the need to expand the provision of

health information, services and interventions both spatially and socially.

Sierra Leone must give more importance to the study of levels and changes of average life expectancy because it directly reflects the links between population health and social economic development. Research on life expectancy is of direct use to the social security and social health insurance systems in Sierra Leone. According to the 2015 Census, mortality in Sierra Leone is slightly higher than the subregion and global levels. Therefore, the main implication is the need to expand the provision of health information, services and interventions both spatially and socially.



CHAPTER 1: INTRODUCTION

1.1. Background and context

A life table is simply a well-designed and convenient way of analysing age-specific death rates. The technique is now used in several other areas, where it is often called 'survival analysis'. Life tables answer many questions that cannot be answered with simple measures of rates and ratios.

For example, life tables provide solutions to questions like "Out of 1,000 persons who were 50 years old in 2014, how many are likely to live to age 60?" or "Immediately after birth in 2014, how many years could a child expect to live" or "Among young men and women entering the labour force at age 18–23, what proportion can be expected to be alive at age 60 (the National Retirement Age in Sierra Leone)?" "Of those, when you begin to collect pension at age 60 how many can be expected to survive for 10 or 15 more years?" Questions of this nature have vast practical importance in many disciplines, such as education, health, insurance and actuarial science. Life tables provide instant measures of the level of mortality independence of the age composition which can therefore be used for comparing the mortality levels of different populations. Sierra Leone has not been prolific in preparing life tables. The first one was published in 2004 using population and housing census data

Life tables are now a major part of research and methodological innovation in opening the way for the optimal utilization of available data on deaths, better international comparability of mortality indicators and a more accurate approach to the measurement of mortality in developing countries like Sierra Leone.

Life tables provide the most complete description of mortality in any population. The basic data input needed for their construction are the age-specific death rates calculated from information on deaths by age and sex (from vital registration) and population by age and sex (from the census). This basic data, however, do not currently exist because of the lack of functioning vital registration systems, or if they do exist are

unusable because of incompleteness of coverage or errors in reporting. Therefore, the analysis for this report on life tables for Sierra Leone derived its data input from the 2015 Population and Housing Census.

1.2. Data sources and limitations

The mortality data used in the construction of the tables comes from the Sierra Leone 2015 Population and Housing Census. This mortality data provides life table survivors, l_x , at exact ages. The data on the age-specific death rate is also from the 2015 Census. The construction of a life table however requires reliable data on a population's mortality rates, by age and sex. The resulting age-specific death rates are then used to calculate a life table.

In most cases, estimation of life tables in countries involves choosing a model life table approach and applying this to observed data usually on child mortality, in order to estimate a full life table.

The life table indicators in this report point to overall high mortality in Sierra Leone. These indicators include age-specific death rate, mortality rates by age and sex and life expectancy. Age-specific death rate and life expectancy at birth are the most frequently used life table indicators.

The data required to obtain such rates are:

- a) The distribution of population by age and sex
- b) The distribution of deaths by age and sex for Sierra Leone and when relevant the distribution will take into consideration of the four regions and 14 districts.

A common form of content error is age-sex data misreported. The quality of such data has been found to be very high during the period under review. The first life table published by SSL was prepared by Joseph A. L. Kamara, Ibrahim G. Kargbo, Philip S. Amara and Samuel Turay of Statistics Sierra Leone, and Samuel J. Braima of Fourah Bay College, University of Sierra Leone.

In general terms, the life tables utilized in this study are based on the responses to the 2015 Census question about “deaths in the household in the last 12 months preceding the census.” The following is how the question was phrased in the 2015 Population and Housing Census questionnaire:

Did a death occur in this household in the last 12 months? If yes,

- Name of the deceased, Sex, age at death
- Cause of death?
- Was death reported to any authority or hospital?

For women 10–54 years of age

- Did the death occur while pregnant?
- Did the death occur during childbirth?
- Did the death occur during the 6 weeks period following the end of pregnancy?

The 2015 Population and Housing Census data on mortality were enough to produce reliable and accurate report on life tables. These data captured the intended purpose that gave rise to little or no adjustment on the data to generate the life tables. However, studies reveal that these data are distorted in many ways that they cannot be relied at face value (Statistics South Africa, 2000; Dorrington, Moultrie and Timaeus, 2004). Some of the problems encountered include wrongful wording, underreporting of deaths and age misstatements, (Dorrington, Moultrie and Timaeus, 2004). As such the final life tables calculated are based on appropriate adjustments. Both the 2004 and 2015 Sierra Leonean Population and Housing Censuses collected some information on economic activity for a person aged 10 years and over. But the 2015 Census also collected information on agriculture.

1.3. Definitions of concepts (defined indicators)

Life tables are mathematical-statistical models that best portray the age structure of mortality.

Age-Specific Death Rates (ASDR) is simply the number of deaths among the population of a specific age group per 1,000 population.

Life Expectancy is the estimated average number of additional years a person could expect

to live if the “age-specific” death rates for a given year prevailed for the rest of his or her lifetime. The estimated number of years an individual is expected to live generally decrease with increasing age.

Life Expectancy at birth (e_o) is simply the average number of years that a new born baby is expected to live subject to the mortality risks prevailing for the cross-section of the population at the time of its birth, or if the mortality conditions of the year corresponding to the life table remain constant.

Mortality rate is simply the number deaths in a given area at a given period of time.



CHAPTER 2: METHODOLOGY

2.1. Introduction

The main purpose of life tables is to describe the mortality behaviour of specific groups of the population. Construction of general life tables is based on census and death statistics figures of local populations under the hypothesis of a closed demographic system. It is also a statistical table based on age-specific death rates in a specific population. The basic objective in the creation of any model life table is to construct a system that gives mortality rates by sex and age, and is defined by a small number of parameters that capture the level as well as the age pattern of mortality. While the Eastern, Northern and Southern regions declined in their respective share of the country's population between 1963 and 2015, that of the Western Area steadily rose from a low of 8.9 per cent in 1963 to 21.1 per cent in 2015, suggesting an increase in the population for this region during the 52-year period. The 2015 Census further revealed that 59 per cent of the total population lived in rural areas compared to 41 per cent in the urban areas. In 2004, however, 67 per cent of the population lived in rural areas compared to 33 per cent in urban areas.

2.2. General approach for preparation of annual life tables

Typically, there are several methods available, with perhaps understated differences among them, for calculating a life table and the resulting byproduct of life expectancy. For the purpose of this report, the method described by Schoen (1978) is used, which is relatively simple and accurate for producing abridged period life tables (using ages 0, 1-4, 5-9, 10-14,....., 80-84 and 100 years and older). Abridged life tables simply refer to life tables that contain the data by intervals of five or 10 years, except in the initial years. It reports for age groups instead of single-year ages. Therefore, in the life table, the l_x column values and all those in the columns to the right are hypothetical, including life expectancy (e_0).

The Population and Housing Census of 2015 was carried out successfully in 14 districts including

Western Area of Sierra Leone. A substantial proportion of deaths in all 14 districts has been enumerated. Hence the mortality rate for all the regions and districts, invariably, has to be estimated using simple demographic techniques. Life table construction requires data collected from a given population distributed by age and sex from censuses, surveys and poor vital registration systems from which careful analysis and evaluation could be drawn.

In such circumstances where there are doubts about the quality of deaths reported on the population, the most reliable estimates of mortality are obtained by indirect methods, that is to say, retrospective estimates of childhood and adult mortality made from reports at a survey or a census of surviving relatives (of children ever born, CEB).

The Brass Growth Balance Equation method (BGBE) relies on comparing age-specific death rates calculated from the number of deaths reported in a census with the death rates implied by the age distribution of the population. This comparison is used to estimate the completeness of the recording of deaths and apply it as an adjustment factor against the reported deaths in the census. This straightforward approach of assessing the completeness of death reported is based on the assumption that the population is 'stable'. A stable population has constant fertility and mortality over a long period. The result is a constant rate of population growth and a fixed age composition.

Even if the total size of the population is changing, the proportionate structure by age remains constant.

Nearly 10 years of deaths (2005–2015) close to the 2015 census year were used to calculate the age-specific death rates in the life tables (used to calculate the probability of dying). The calculation of the number of survivors and deaths in the table population (Abridged life table for Sierra Leone Both Sexes, 2015), gives a brief description of the life table columns shown in table 3.1 (Life table at national level).

Calculations of life tables were done using the software package known as Population Analysis Software (PAS) developed by the US Census Bureau.

Various relevant actuarial textbooks have been reviewed as sources of information and are included in the bibliography for this report.

2.3. Data collection

For the purpose of this report, the data gathered is from the 2015 Population and Housing Census of Sierra Leone, and the report takes into evaluate the reliability of the results.

2.4. Estimations of life table indicators

2.4.1. General notation

The construction of life tables for Sierra Leone is not a straight forward procedure. Most often, there are limitations in the mortality and fertility data.

Model life tables are not models in the usual sense of the word. They do not represent casual theories or statistical models. Rather, a model life table can be thought of as a representation theorem. The central notion is that the complex phenomenon of age-specific mortality rates (ASMR) can be adequately represented by two or three parameters, such as the family to which model belongs and the mortality level.

2.4.2. Calculation of number of survivors and deaths in the table population

A life table (also called mortality table or actuarial table) shows, for a person at each age, what the probability is that they die before their next birthday. Life tables for Sierra Leone are constructed separately for men and women because of their different mortality rates. The basic input to the construction of the life table is the set of age specific mortality rates from which all other columns are derived.

The notation used here for different columns of the life table is explained below.

Tables 3.1, 3.2 & 3.3 show life tables for Sierra Leone males and females based on mortality risks observed in 2015 Population and Housing Census. Understanding the tables requires a few definitions. Age may be referred to as exact age when it is unclear whether the age or age in completed years is intended. In practice, 'age' tends to be used without qualification, the reader being expected to figure out from context what meaning is intended. This is almost always possible, and not difficult, but it requires experience and practice.

Rows of the table correspond to age intervals. The number in the x column is the (exact) age at which the age interval begins. The number in the n column is the width of the interval. The age interval is understood to be what mathematicians or actuaries call 'left closed, right open', meaning that they include persons whose exact age is x but exclude persons whose exact age is $x+n$. The last interval is nearly always 'open-ended', in this case age 100 years and over.

The subscript notation in the column headings was invented by actuaries and has been in use for well over century. The following subscript x denotes exact age. If the values in the column refer to an age interval, the leading subscript, sometimes called a 'prescript', gives the width of the interval. The prescript is omitted if the width is one year. Putting the width of the open-ended interval to ∞ is a convenient formalism.

The nm_x column is not strictly a life table column, rather it is the primary input from which most period life tables are constructed. The na_x column, used in the tables above provides ancillary information used to construct the table. These two columns may be shown or not, depending on how the life table was constructed and on how much detail the writer choses to show.

The remaining six columns in Tables 3.1, 3.2 tend to appear in all life tables. These are discussed below:

X: Age in years at the start of the interval. The interval implied is the age at the start through to, but not including, the next stated age.

nm_x : Age-specific death rate for age interval

nq_x : Probability of an individual age x dying during the interval

l_x : Number of persons alive at the start of the age interval of a hypothetical birth cohort of 100,000 (or some other arbitrary starting number, called a radix).

nd_x : Number of persons dying during the age interval of a hypothetical birth cohort of 100,000 experiencing the nq_x values at each interval.

nL_x : Number of person-years lived during the age interval of a hypothetical birth cohort of 100,000 experiencing constant rates of mortality, number of births, age structure and size (called the stationary population).

nS_x : Proportion of the life table population in age group $(x, x + n)$ who are alive n years later.

T_x : Total number of person-years lived in the age interval and all subsequent age intervals of the stationary population.

e_x : Expectation of life remaining at the start of age interval.

na_x : Average number of years lived in the age interval by those dying during that age interval

Age specific death rates are defined as;

$$nm_x = \frac{\text{Number of deaths in the age group}}{\text{Population of the age group mid period}}$$

2.5. Basic indicators

The main indicator measuring the mortality level depending on age is the probability of dying within the year since reaching a given age - q_x . The probability of dying (q_x) is a ratio of the number of dead persons at each age and the size of population from which these persons originate, i.e., the life table number of the persons from a given cohort who have died within the age interval x and $x+1$ years divided by the life table for the number of persons from the same cohort who have survived up to the exact age x years:

$$q_x = \frac{M'_x + M'_{x+1}}{S_x + S_{x+1} + M'_x + M'_{x+1}} + \frac{M''_x + M''_{x+1}}{S_x + S_{x+1} + M'_x + M'_{x+1}}$$

Addition of q_x to 1, $p_x = 1 - q_x$, is the probability for surviving up to the next age (1 year more). The probability of surviving (p_x) is related, based on the following dependence: $p_x + q_x = 1$

The indicator p_x shows the probability existing for a person who has reached a given age, to survive one more and to reach the next age. It is calculated according to the formula: $p_x = \frac{l_{x+1}}{l_x}$

Life expectancy (e_x) is the ratio between the sum of men-years which the persons who have reached a given age x will survive for the whole period of their future life (from age x to the upper limit age) to the number of persons who have survived the age x . It is calculated according to the formula:

$$e_x = \frac{T_x}{L_x}$$

Life expectancy at birth of a newborn is accepted as the life expectancy of the population.

In the construction of life tables by causes of death, the average lifespan is calculated using the hypothesis for exclusion of some basic causes for death and their maximum contribution to life expectancy, based on all causes for death, is taken into account. Age-specific probability for dying by basic causes of deaths shows the contribution of the separate causes to the age-specific probability for dying, in which the influence of all causes for death is aggregated.

2.6. Calculation of life expectancy

Life expectancy at a given age is a very important measure resulting from life tables. It can be interpreted as the average number of years a person is expected to live subject to the occurrence of mortality conditions of a specified period throughout the life span. Hence, the life expectancy at birth is the average length of life of a person. Similarly, the life expectancy at age x is the average number of remaining years a persons who survive to age x has to live. Life expectancy can be calculated for any age, giving the remaining life expectancy, i.e., the further number of years a person can on average expect to live given the age they have attained.

Dividing the total number of years of life remaining (T_x) by the number of people still living at this age (L_x) results in the average number of years of life remaining (e_x). This implies:

$$e_x = \frac{T_x}{L_x}$$

For $x=0$, the formula above boils down to the usual manner of calculating the average in probability theory, by dividing the sum of the ages on which the members of the life table population die by the radix, which for this report is 100,000.

For the calculation of the total number of years of life remaining (T_x), the number of years of life attained per age /age group (nL_x) has to be determined.

The number of years of life attained between two subsequent ages is determined by the number of people still living at $x+n$ and the average number of years lived by those who die between age x and $x+n$. The number of people still living at age $x+n$ all contribute n years to the number of years of life attained. For the number people who die in the age interval, it is assumed that they die on average halfway through the interval. Thus:

$$nL_x = n \cdot l_{x+n} + 0.5n \cdot nd_x \text{ since } nd_x = l_x - l_{x+n}$$

in the same way so it can be:

$$nL_x = 0.5n \cdot (L_x + L_{x+n})$$

The number of deaths and survivors from table 3 is calculated. Thus, at age 0, the mortality ratio is 0.0393 and the number of survivors is 100,000. Substituting; $nd_x = q_x \cdot l_x$,

This produces the number of deaths before reaching the age of 1 year as $1d_0 = 0.0393 * 100,000 = 3930$.

Using this notation, the number of survivors at age 1 can be calculated: $l_1 = 100,000 - 3930 = 96070$.

Quality indicators in the SSL life tables have no confidence intervals provided. These tables are calculated based on the deaths in the entire Sierra Leonean population. There is therefore no sample selection with the accompanying error margins.

CHAPTER 3: DISCUSSION OF RESULTS

3.1. Introduction

Ideally, life tables should be constructed from a long historical series of mortality data from vital registration where the deaths and population of the de jure (or de facto) population-at-risk are entirely covered by the system. The source of mortality data used to estimate life tables for Sierra Leone was the 2015 Population and Housing Census. The quality of the data is better than that of the previous censuses conducted in 1961, 1975, 1985 and 2004. The techniques and software packages used in generating life tables for Sierra Leone are more applicable for developing countries where data source is a problem.

The sources of child and adult mortality data used to estimate the life table for Sierra Leone were reports on surviving children (CEB) and mothers (maternal orphanhood).

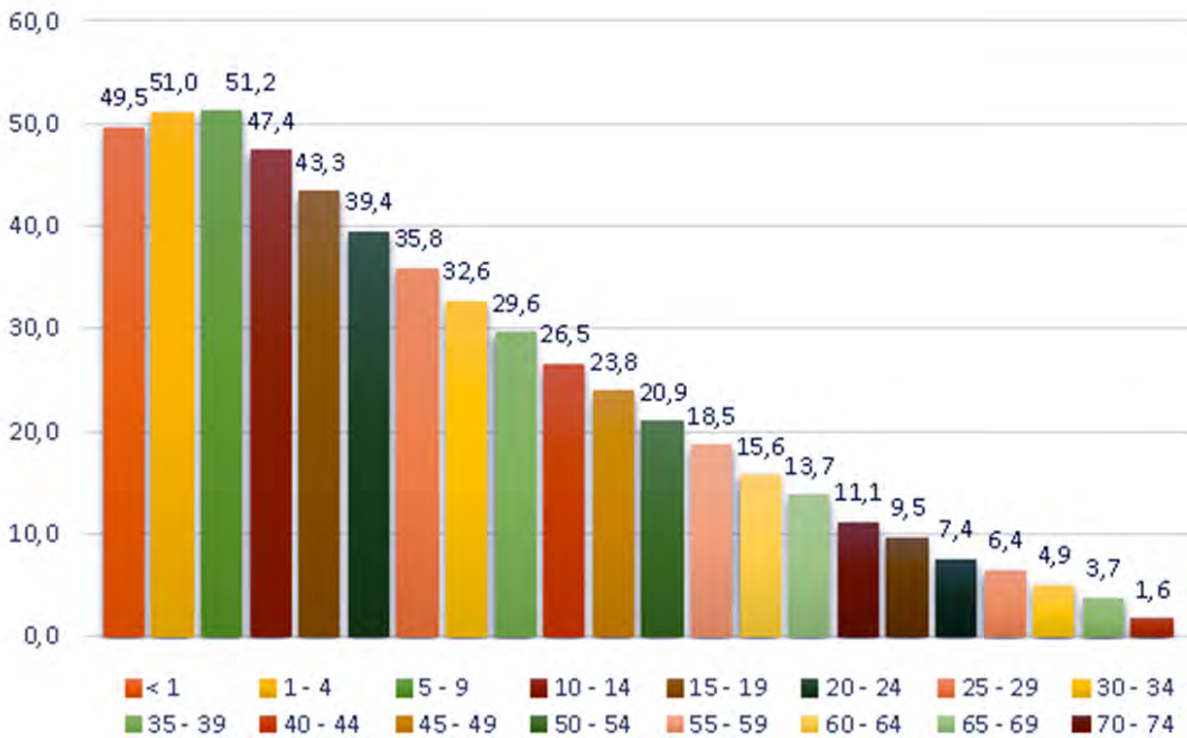
3.2. Life tables for the 12-month period prior to the 2015 Population and Housing Census

Before moving on to the construction of the life tables for Sierra Leone, it is necessary to examine the reliability of mortality data from deaths in households during this period under review. Frequently, people fail to report a death in a census because of taboos, beliefs, traditions or emotional reasons. To refer to a recent death may be an emotionally difficult experience. Another problem is that after an adult death a household split may occur and such deaths can remain unreported. These two problems may be resulted in an under-estimation of mortality. But it may also happen that people confuse a death in a household with a death of a family member living in another household, with the result that the same death is reported more than once. In this case mortality tends to be over-estimated. In addition, errors in the perception of the 12-month period before the population and housing census may result in an over-estimation or under-estimation of mortality.

Most of the methods mentioned earlier attempt to solve these over- or under-reporting problems. The methods are usually based on mathematical relationships between the age distribution of deaths and the age distribution of the population, i.e., by using a question on the number of household members who had died during the 12 months preceding the Census. It is important to note that this method, as with other similar methods, is used to evaluate adult mortality only, which usually the population aged 15 and over. However, mortality among the population aged 5–9 and 10–14 may also be adjusted using this method. The evaluation of the younger population (those aged under 1 year and 1 to 4 years) has been calculated using different methods by one of the thematic lead writers of the 2015 Population and Housing Census Report, especially those based on the number of CEB and surviving.



Figure 3.1 Life tables for Sierra Leone 12 months prior to the 2015 Population and Housing Census



The graph reveals that life expectancy at birth is 51.2 years for both males and females in the age group of 5-9. This indicates marginal improvements in mortality patterns during the last decade which is well known for Sierra Leone. As expected the pace of gains in life expectancy gradually retarded over time.

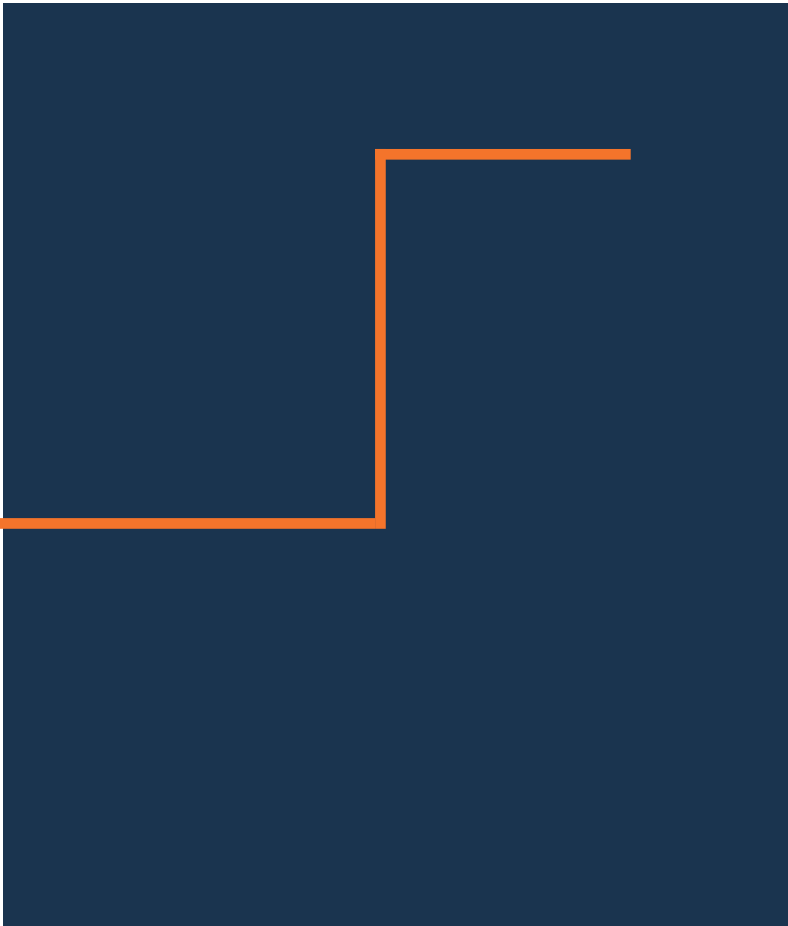




Table 3.1 Life table at national level: Abridged life table for Sierra Leone, 2015

Both sexes abridged life table, Sierra Leone 2015									
Age	nM_x	na_x	nq_x	l_x	nd_x	nL_x	nP_x	T_x	e_x
0	0.0504	0.189	0.0484	100000	4844	96069	0.91929	4952753	49.5
1	0.0202	1.684	0.0774	95156.15	7361	363575	0.94376	4856683	51.0
5	0.0048	2.500	0.0236	87795.59	2074	433792	0.97805	4493108	51.2
10	0.0041	2.500	0.0202	85721.23	1734	424271	0.97605	4059316	47.4
15	0.0056	2.500	0.0278	83987.31	2331	414109	0.96810	3635045	43.3
20	0.0074	2.500	0.0362	81656.21	2954	400897	0.95713	3220936	39.4
25	0.0102	2.500	0.0498	78702.47	3921	383711	0.94389	2820039	35.8
30	0.0130	2.500	0.0627	74781.86	4691	362182	0.93633	2436328	32.6
35	0.0134	2.500	0.0647	70090.96	4533	339123	0.92356	2074146	29.6
40	0.0186	2.500	0.0890	65558.11	5836	313200	0.91077	1735024	26.5
45	0.0187	2.500	0.0895	59721.81	5343	285251	0.89347	1421824	23.8
50	0.0267	2.500	0.1253	54378.71	6812	254864	0.87960	1136572	20.9
55	0.0244	2.500	0.1148	47566.75	5462	224179	0.84955	881708.8	18.5
60	0.0422	2.500	0.1907	42104.69	8029	190452	0.81622	657530.2	15.6
65	0.0384	2.500	0.1752	34075.94	5972	155451	0.77440	467078.6	13.7
70	0.0669	2.500	0.2866	28104.3	8056	120381	0.71182	311628	11.1
75	0.0679	2.500	0.2903	20048.24	5820	85690	0.64455	191246.6	9.5
80	0.1152	2.500	0.4472	14227.77	6363	55231	0.54247	105556.6	7.4
85	0.1250	2.500	0.4762	7864.807	3745	29962	0.47950	50325.15	6.4
90	0.1735	2.500	0.6051	4119.841	2493	14367	0.36438	20363.53	4.9
95	0.2215	2.500	0.7128	1626.806	1160	5235	0.12707	5996.914	3.7
100	0.6131	1.631	1.0000	467.1606	467	762		761.9973	1.6

Source: SSL, 1974, 1985, and 2004 Population and Housing Censuses.



Table 3.2 Abridged life table for Sierra Leone males, 2015

Males abridged life table, Sierra Leone 2015									
Age	nM_x	na_x	nq_x	l_x	nd_x	nL_x	nP_x	T_x	e_x
0	0.053278	0.189	0.0511	100000	5107	95860	0.915094	4830993	48.3
1	0.021546	1.705	0.0821	94892.8	7793	361687	0.940104	4735133	49.9
5	0.004982	2.500	0.0246	87099.9	2143	430142	0.976827	4373445	50.2
10	0.004389	2.500	0.0217	84956.82	1844	420174	0.975495	3943304	46.4
15	0.005549	2.500	0.0274	83112.82	2274	409878	0.9685	3523130	42.4
20	0.00728	2.500	0.0358	80838.34	2890	396967	0.9583	3113252	38.5
25	0.009809	2.500	0.0479	77948.32	3731	380413	0.946068	2716285	34.8
30	0.012435	2.500	0.0603	74216.99	4475	359897	0.932917	2335872	31.5
35	0.015434	2.500	0.0743	69741.75	5182	335754	0.921545	1975975	28.3
40	0.017306	2.500	0.0829	64559.76	5355	309412	0.907071	1640221	25.4
45	0.021901	2.500	0.1038	59205.13	6147	280659	0.890766	1330809	22.5
50	0.024465	2.500	0.1153	53058.41	6116	250001	0.866612	1050150	19.8
55	0.033337	2.500	0.1539	46942.13	7223	216654	0.836305	800148.7	17.0
60	0.038432	2.500	0.1753	39719.51	6963	181189	0.79426	583494.6	14.7
65	0.055226	2.500	0.2426	32756.08	7948	143911	0.742278	402305.6	12.3
70	0.064481	2.500	0.2776	24808.41	6888	106822	0.679197	258394.4	10.4
75	0.093994	2.500	0.3805	17920.43	6820	72553	0.596911	151572.3	8.5
80	0.112649	2.500	0.4395	11100.86	4879	43308	0.519446	79019.04	7.1
85	0.153188	2.500	0.5538	6222.282	3446	22496	0.422744	35711.2	5.7
90	0.183834	2.500	0.6297	2776.155	1748	9510	0.341093	13215.11	4.8
95	0.233747	2.500	0.7377	1027.881	758	3244	0.124479	3705.021	3.6
100	0.58467	1.710	1.0000	269.6482	270	461		461.197	1.7

Source: SSL, 1974, 1985, and 2004 Population and Housing Censuses.



Table 3.3 Abridged life table for Sierra Leone females, 2015

Females Abridged Life Table, Sierra Leone 2015									
Age	nM_x	na_x	nq_x	l_x	nd_x	nL_x	nP_x	T_x	e_x
0	0.047548	0.187	0.0458	100000	4578	96280	0.923509	5080537	50.8
1	0.018946	1.659	0.0726	95422.1	6924	365475	0.947425	4984257	52.2
5	0.004581	2.500	0.0226	88497.64	2004	437478	0.979309	4618782	52.2
10	0.003774	2.500	0.0187	86493.58	1617	428426	0.976482	4181304	48.3
15	0.005769	2.500	0.0284	84876.87	2414	418350	0.966793	3752878	44.2
20	0.007771	2.500	0.0381	82463.26	3143	404458	0.955549	3334528	40.4
25	0.010475	2.500	0.0510	79320.05	4048	386480	0.944169	2930069	36.9
30	0.012559	2.500	0.0609	75271.84	4583	364902	0.938723	2543590	33.8
35	0.012732	2.500	0.0617	70688.96	4361	342542	0.925813	2178688	30.8
40	0.018301	2.500	0.0875	66327.85	5804	317130	0.912041	1836146	27.7
45	0.018511	2.500	0.0885	60524.14	5354	289235	0.898186	1519016	25.1
50	0.024732	2.500	0.1165	55170.05	6425	259787	0.889272	1229780	22.3
55	0.021994	2.500	0.1042	48744.9	5081	231022	0.865133	969992.7	19.9
60	0.036933	2.500	0.1691	43663.73	7382	199864	0.837918	738971.2	16.9
65	0.033296	2.500	0.1537	36282.04	5576	167470	0.802593	539106.8	14.9
70	0.056899	2.500	0.2491	30706	7648	134410	0.746592	371636.7	12.1
75	0.059556	2.500	0.2592	23058.16	5976	100350	0.67996	237226.3	10.3
80	0.100682	2.500	0.4022	17081.74	6870	68234	0.579357	136876.5	8.0
85	0.116638	2.500	0.4515	10211.8	4611	39532	0.506734	68642.68	6.7
90	0.159193	2.500	0.5694	5600.909	3189	20032	0.394602	29110.9	5.2
95	0.210253	2.500	0.6891	2411.933	1662	7905	0.129323	9078.799	3.8
100	0.638743	1.566	1.0000	749.9472	750	1174		1174.098	1.6

Source: SSL, 1974, 1985, and 2004 Population and Housing Censuses.

3.3 Life tables for males and females by district, 2015 Population and Housing Census

In the abridged life table for Sierra Leone, life expectancy at birth (beginning of age interval 0) was 49.5 years. The life expectancy at 1 year was 51.0 years, increasing by 1.5 years of life expectancy compared to age 0. This shows that even though the probability of dying during the first year of life often is much higher than immediate subsequent years, Sierra Leone is gradually experiencing an increase in life expectancy at birth. (i.e., infant mortality rates are low, often life expectancy at age 1 is used for comparative purposes). Similarly, life expectancy at age 60 is 15.6 years (table 3.1).

3.4 Mortality life tables

The life expectancy at birth for males in Sierra Leone is lower than females across all the districts.

3.5 Life expectancy at birth by sex

Life tables and life expectancy can be for specific subpopulations, such as sex, ethnicity, geography, regions, districts, rural, urban, year(s), periods, or a combination of such characteristics, provided matching mortality and population data are available. Expanding on the abridged life table for Sierra Leone 2015 tables 3.2 and 3.3, life expectancy at birth often is higher for females, at 50.8 years, than males, at 48.3 years. These figures are noticeably higher than the life expectancies in 2004 that were recorded as 49.4 years for females and 47.5 years for males (table 3.4).



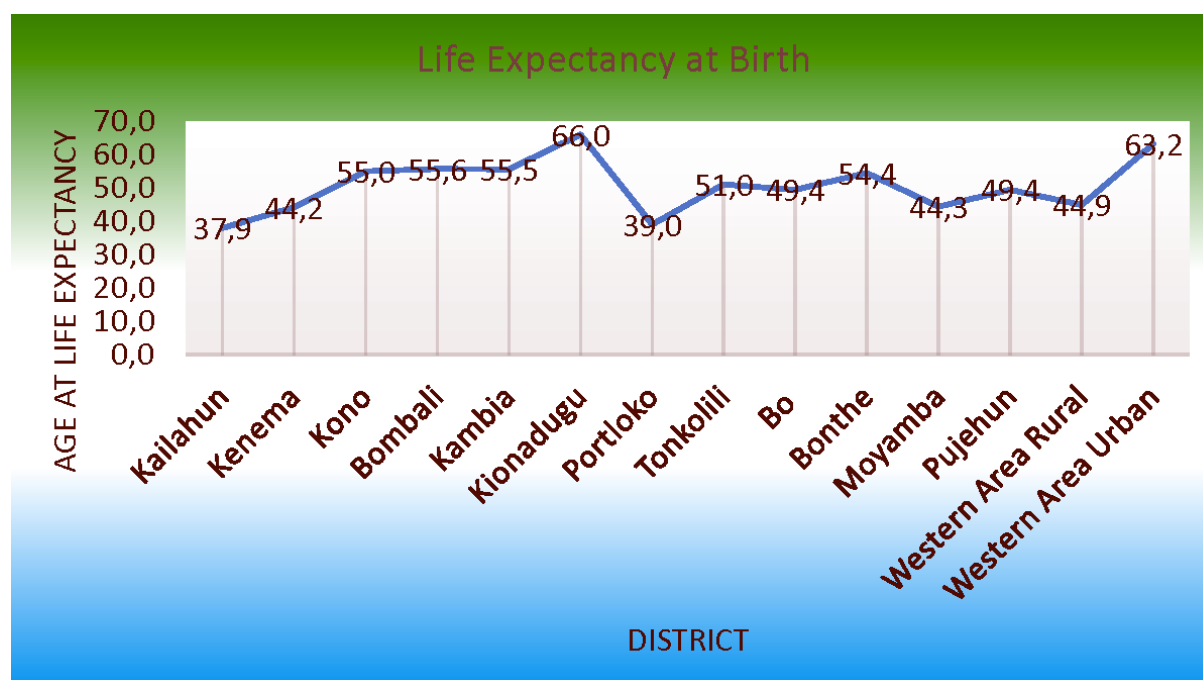
Table 3.4 Life expectancy at birth by regions, districts and sex

Region	Life expectancy at birth		
	Total	Male	Female
Sierra Leone	51.5	48.3	50.8
East	44.3	43.6	45.0
Kailahun	37.9	37.5	38.3
Kenema	44.2	43.4	44.9
Kono	55.0	53.4	56.8
North	50.6	48.9	52.3
Bombali	55.6	53.2	58.1
Kambia	55.5	53.0	58.3
Koinadugu	66.0	65.1	66.8
Port Loko	39.0	37.6	40.5
Tonkolili	51.0	50.0	52.1

Region	Life expectancy at birth		
	Total	Male	Female
South	48.8	47.7	49.9
Bo	49.4	48.1	50.9
Bonthe	54.4	53.1	55.8
Moyamba	44.3	42.9	45.7
Pujehun	49.4	49.3	49.4
Western Area	56.5	54.7	58.2
Urban	63.2	61.3	65.1
Rural	44.9	43.6	46.3

Source: Statistics Sierra Leone (SSL), ICF Macro and ICF International, 2009 and 2014.

Figure 3.2 Sierra Leone Life expectancy at birth by districts



In Sierra Leone from 1985-2004 to 2005–2015, life expectancy at age 15 years was 42.4 years for males and 44.2 years for females. There was a sizable change in this age category of the population when compared with 2004 Census figures. There is significant change of 1.8 years for females to that of males in this category of the population. Equally, so, for age 20 years, there is an improvement in the life expectancy for the period under review.

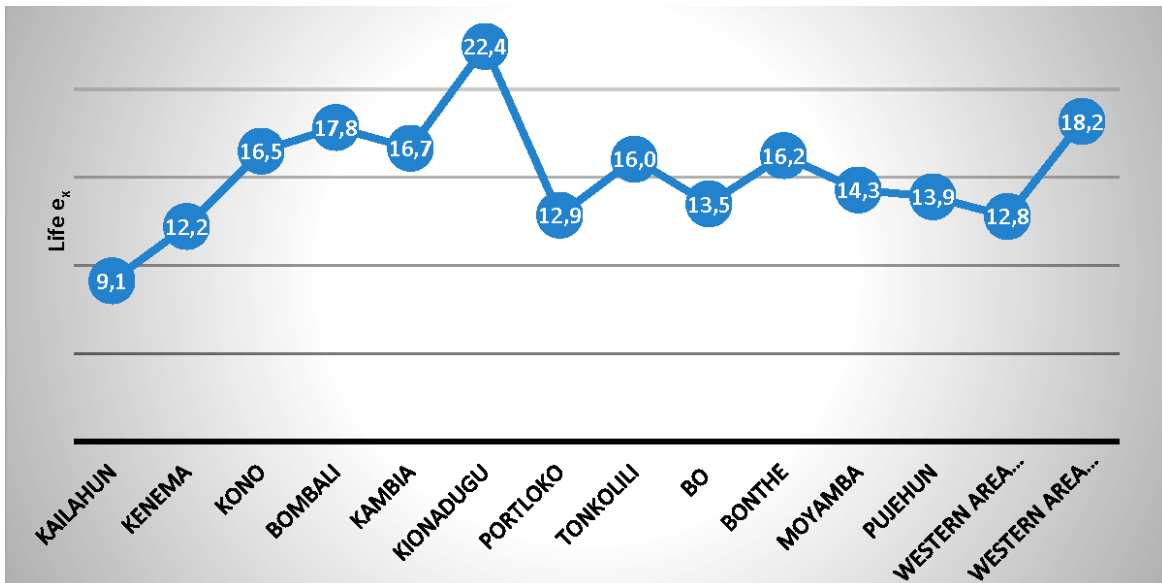


3.5 Life expectancy at age 60 by region, district and sex

Region	Life expectancy at age 60		
	Total	Male	Female
Sierra Leone	15.6	14.7	16.9
East	12.3	11.9	12.8
Kailahun	9.8	9.1	10.6
Kenema	12.4	12.2	12.5
Kono	17.4	16.5	18.5
North	17.8	16.3	19.3
Bombali	20.1	17.8	22.1
Kambia	19.4	16.7	22.2
Koinadugu	22.3	22.4	22.1
Port Loko	14.5	12.9	15.9
Tonkolili	17.1	16.0	18.1
South	15.3	14.1	16.5
Bo	15.0	13.5	16.6
Bonthe	17.2	16.2	18.3
Moyamba	15.7	14.3	11.8
Pujehun	14.4	13.9	14.9
Western Area	18.2	16.2	20.4
Urban	20.4	18.2	22.7
Rural	14.4	12.8	16.0

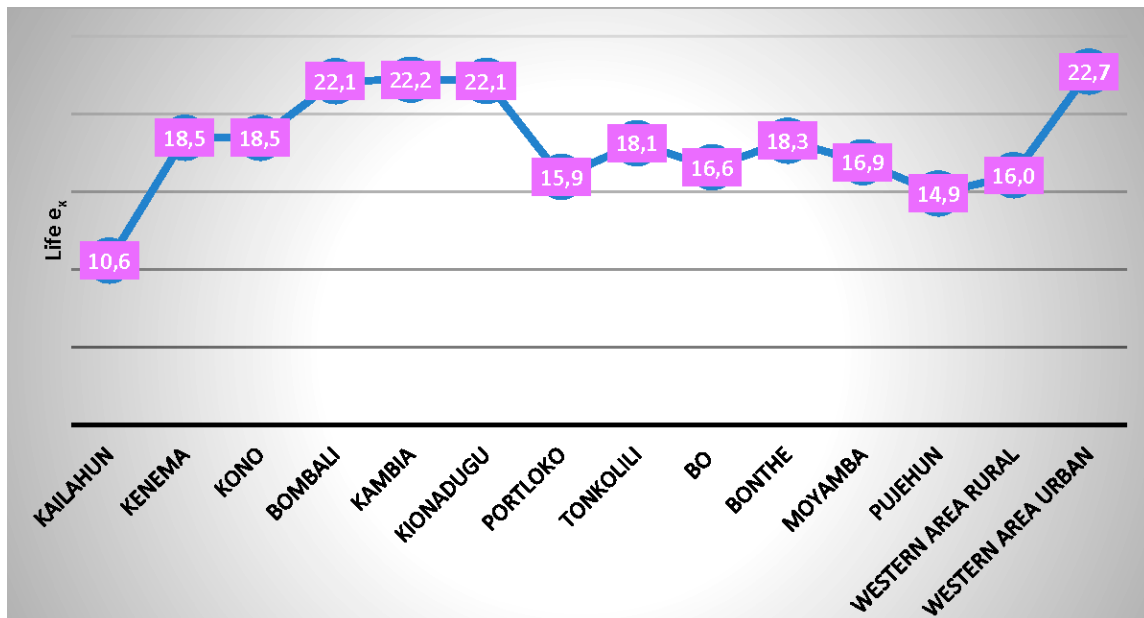
Source: Statistics Sierra Leone (SSL), ICF Macro and ICF International, 2009 and 2014.

Figure 3.3 Males life expectancy at age 60 by district



Koinadugu District in the Northern Region reveals the highest life expectancy at age 60 for males at 22.4 years. This means that males in this area are expected to live for another 22.4 years after reaching age 60. Kailahun in the Eastern Region records the lowest life expectancy after age 60, at 9.1 years.

Figure 3.4 Female life expectancy at age 60 by district



As for females aged 60, it was revealed that Kailahun District again recorded the lowest female life expectancy with 10.6 years to live after age 60. Bombali, Kambia and Koinadugu in the northern region recorded a steady increase the number of years expected to live after age 60 when compared with Kailahun District. However, Western Area Urban shown the highest number of years to live after attaining age 60, with 22.7 years.

3.6 An analysis of life tables

Life expectancy at a given age is a very important measure derived from life tables. It can be interpreted as the average number of years a person is expected to live subject to the prevalence of mortality conditions of a specific period throughout the life span. Hence, the life expectancy at birth is the average length of life of a person. Similarly, the life expectancy at X is the average number of remaining years a person who survives to age X has to live.

3.7 Levels and trends in life expectancy at birth



Table 3.6 Life expectancy at birth for Sierra Leone by sex for the period (2004-2015) of life tables generation

Region	Life expectancy at birth 2004 census			Life expectancy at birth 2015 census			Difference in male	Difference in female
	Total	Male	Female	Total	Male	Female		
Sierra Leone	48.4	47.5	49.4	51.5	48.3	50.8	0.8	1.4
East	46.6	45.1	47.6	44.3	43.6	45.0	-1.5	-2.6
Kailahun	48.6	49.1	49.5	37.9	37.5	38.3	-11.6	-11.2
Kenema	45.0	43.9	46.2	44.2	43.4	44.9	-0.5	-1.3
Kono	46.9	45.7	48.2	55.0	53.4	56.8	7.7	8.6
North	49.8	48.9	50.7	50.6	48.9	52.3	0.0	1.6
Bombali	52.5	51.6	53.5	55.6	53.2	58.1	1.6	4.6
Kambia	50.7	50.0	51.5	55.5	53.0	58.3	3.0	6.8
Koinadugu	49.3	48.2	50.6	66.0	65.1	66.8	16.9	16.2
Port Loko	49.0	48.1	50.0	39.0	37.6	40.5	-10.5	-9.5
Tonkolili	47.9	47.3	48.6	51.0	50.0	52.1	2.7	3.5
South	45.7	44.9	46.6	48.8	47.7	49.9	2.8	3.3
Bo	45.3	44.6	46.1	49.4	48.1	50.9	3.5	4.8
Bonthe	49.1	48.6	49.6	54.4	53.1	55.8	4.5	6.2
Moyamba	44.5	43.1	46.0	44.3	42.9	45.7	-0.2	-0.3
Pujehun	46.0	45.4	46.7	49.4	49.3	49.4	3.9	2.7
Western Area	53.5	52.5	54.5	56.5	54.7	58.2	2.2	3.7
Urban	54.8	53.9	n/a	63.2	61.3	65.1	7.4	n/a
Rural	50.1	48.9	51.4	44.9	43.6	46.3	-5.3	-5.1

Source: Projected from 2015 Sierra Leone population and housing census data

Life expectancy at birth in Sierra Leone was 48.3 years for males and 50.8 years for females during the 2015 Census period. It increased by 0.8 years for males and 1.4 years for females between 2004 and 2015. This indicates some slight improvements in mortality patterns during the last decade.

As shown in table 3.6 the most rapid improvement resulting in an increase of 16.9 and 16.2 years for males and females respectively was recorded in Koinadugu District. The dramatic mortality decline in this area of the country is well documented.

As expected, the tempo of gains in life expectancy gradually retarded over time. This is noted in districts like Kono, Kambia, Bonthe and Bo, particularly for females, for whom life expectancy has increase in a reducing rate of years. The progress of male life expectancy in these areas appears to have almost stalled.

Gender differences exist in Sierra Leone's life expectancy at birth. Until 2015, females were at a disadvantage in that their life expectancy was less than that of males by 0.7 years in Koinadugu District. However, it seems that the advantage is gradually increasing for females. For example, female life expectancy at birth was higher than that of males by 1.9 in 2004, 2.5 years in 2015.

3.8 Age-sex specific mortality rates, unadjusted, adjusted and smoothed by the Brass Growth Balance Equation method

Comprehensive systems of vital registration are generally lacking in developing countries, and information on current deaths by sex and age are frequently available from census questions on deaths among household members during the preceding year, or from multi-round surveys in which enumerators make repeated visits to sample households to ascertain what births and deaths have occurred during the intervals between the rounds. Unfortunately, deaths recorded in these ways are often seriously under-reported. The Growth Balance Equation Method constitutes a means of testing for the completeness of the recording and correcting for any shortfall (Brass 1975).

If a population has a proportionate age structure which is roughly constant, and is increasing at an annual rate of growth r , it follows that all sections of the population, such as those age 15 and over, 20 and over, 25 and over, and so on, will also be increasing at the rate r . Now, in the absence of migration, the growth rate (r) of a population is the difference between the birth rate (b) and the death rate (d) so that $r = b - d$, and $b = r + d$.

For a population aged y and over, 'births' are the number of persons reaching the age of y every year, which can readily be calculated from the age distribution. For instance a sufficiently close approximation can be obtained by taking one tenth of the sum of the two five-year age groups on either side of y . Thus, if $b(y)$ and $d(y)$ are the 'partial' birth and death rates of the population aged y and over, $b(y) = r + d(y)$. Thus, given the age the age distribution and the recorded deaths by age, the values of $b(y)$ and $d(y)$ may be calculated for various ages. If $b(y)$ is plotted against $d(y)$, and if the data are accurate, the points should lie on a straight line with a slope of 1 and a intercept of r .

Suppose that the deaths are under-reported by a constant proportion at all ages, so that $d(y) = f.d'(y)$: i.e. f is the correction factor which should be applied to the reported deaths rates $d'(y)$. Our basic equation then becomes: $b(y) = r + f.d'(y)$. If $b(y)$ is now plotted against $d'(y)$, the points should still lie on a straight line with an intercept of r , but the slope now becomes f . If the basic assumption of the constant under-reporting of deaths does not hold true, then the points will not lie on a straight line. Thus, the technique is to some extent self-validating. In practice it can only be used with deaths of adults, since the relative under-reporting of the deaths of infants and children nearly always differs from that of adults. The other assumption that the proportionate age distribution is constant generally holds true in the absence of significant changes in fertility.



Table 3.7 Life tables for Sierra Leone (2015) showing the probability of dying at exact age

Age (x)	Probability of Dying at Exact Age(x)
Year	Both sexes
0	0.2239
1	0.0963
5	0.0236
10	0.0202
15	0.0278
20	0.0362
25	0.0498
30	0.0627
35	0.0647
40	0.0890
45	0.0895
50	0.1253
55	0.1148
60	0.1907
65	0.1752
70	0.2866
75	0.2903
80	0.4472
85	0.4762
90	0.6051

3.8.1 Probability of dying between ages 15 and 59 by region and district

Life expectancy at age 15 has improved generally in the country especially in the Koinadugu district with a life expectancy of 56.5 years by about three years, but some parts of Sierra Leone, particularly those that experienced a reduction in life expectancy at birth, also saw declines in life expectancy at age 15 (Kailahun District 32.2 years). At the regional level, it was revealed that the Western Area has a life expectancy of 48.7 years at age 15.

At age 60, Koinadugu and Western Area also show the highest life expectancy at 22.3 years and 18.2 years respectively. It is foreseen that in all regions and all districts in Sierra Leone life expectancy at age will see a sustained increase in the next decades.

Source: Projected from 2015 Sierra Leone population and housing census data

CHAPTER 4: POLICY IMPLICATIONS

Average life expectancy is an important indicator to measure the quality of life. It reflects not only the levels and patterns of mortality, but also the basic indicator of the health of a population. Sierra Leone needs to give more importance to the study of levels and changes of average life expectancy because it directly reflects the links between population health and socio-economic development. The government should improve the health of the population and that of the economy at the same time. The concept of population security will help to develop proper development strategies for population health and socio-economic growth.

According to the 2015 Census, mortality in Sierra Leone is slightly high compared with the subregion and global levels. The main implication is the need to expand the provision of health information, services and interventions, both geographically and socially. A geographic expansion would mean extending health services to reach the entire population, including those living in the most remote and hard-to-reach areas. A social expansion would consist of increasing health services to reach all social groups regardless of their socioeconomic position, ethnicity and level of education.

As in most countries, life expectancy is higher among females. Sierra Leone is not an exception, but the differences are minimal (2.5 years). A widely used measure of adult mortality is the probability of dying between ages 15 and 59. In Sierra Leone, this probability among males is slightly double that of females. It is also important to consider this differential in urban and rural areas. The information obtained from the number of person-years lived in each age group, the mean age and median age at entry into and withdrawal from employment, the labour force, the expected total consumption and output of different ages can be used to calculate the expected working years of people in Sierra Leone.

Research on life expectancy in order to develop working life tables for Sierra Leone should be given high priority because of its usefulness to

the social security and social health insurance systems in Sierra Leone. One such use relates to the settlement of social security claims, determining exempted groups in society and payments benefits arising from employment or occupational injury to social security health insurance contributors. The working life table can be used to estimate lost earnings arising from injuries, which could serve as the basis for paying compensation to injured old age contributors. In the absence of such scientific means of computing benefits, workers' unions and lawyers may have to rely on assumptions and guess work to arrive at compensation, health benefit provisions and claims.

Following the above analysis of life expectancy, it is apparent that there is a need for setting clear policies, expected revenue from taxation, and contribution revenue for social security and insurance revenues and employment targets. Employment policies and targets should be aimed at increasing the average exit age at which people stop working and increase the employment rate of older workers, especially women.

Learning from the experiences of developed economies that have effective social protection systems in place, considerable attention should be given to developing policies that boost labour force participation rates, particularly for women and older workers. There is need for setting clear targets for increasing the employment rate and delaying the exit from the labour force for older workers, mainly women.

As a result of low average life expectancy, the policy focus should be on increasing the social security health insurance contribution of the large number of persons in self-employment, especially older workers in the informal economy, while at the same time planning for a progressive increase in the effective retirement age and employability of these workers.

Some of the policy responses that could encourage increasing labour force participation and delayed retirement from the labour force include removing incentives encouraging early retirement and providing financial rewards for longer service, continuous training of the work force to update their skills, increased adult education and training, safer and more attractive work environments, etc. All of these would require the collaboration of employers in both the public and private sector. A coordinated system of collaboration among the various employment agencies needs to be put in place.

A factor that is key to the successful application of this report on life tables for Sierra Leone is the availability of reliable estimates of child and adult mortality required to identify a fully specified life table.

Another policy intervention suggested by the results of the analyses presented in this thematic report is the promotion of healthy habits and preventive health care.



CHAPTER 5: CONCLUSIONS AND RECOMMENDATIONS

The main purpose of a census is to know the number of people living in a given territory. A life table is designed essentially for the purpose of measuring survivorship, life expectancy and mortality. It readily permits making a mortality allowance for age cohorts and eliminating the burden of compiling data on deaths by age cohort from the annual death statistics by age even when the data are available.

Differences in life expectancy reflect different levels of social and economic development. Though Sierra Leone has achieved slight changes in life expectancy at the national level, it conceals the great diversity of different regions and districts. In the past 10 years or more, mortality rates have decreased gradually in each region and district and life expectancies increase accordingly, but great differences in life expectancy exist among districts. In fact, the gaps in life expectancy among regions and districts are getting wider.

Over the past 10 years, life expectancy has been rising in Sierra Leone at a slower pace than has been achieved in many other sub-Saharan African countries and high-income countries.

Consequently, Sierra Leone has been falling steadily in the world rankings for life expectancy, and the gap between Sierra Leone and countries with the highest achieved life expectancy has continued to widen. Life expectancy at birth in Sierra Leone for both sexes combined is 49.5 years, and 48.3 years for males and 50.8 years for females. What are the reasons for the relatively poor performance of Sierra Leone?

Descriptive analysis can be a powerful tool in demography. In this case, the report carefully examined the cause-of-death statistics to ascertain whether specific causes of deaths could account for the relatively low level of life expectancy in Sierra Leone and were associated with improved life expectancy in other sub-Saharan countries. A comparative analysis of causes of death is complicated by issues with varying effects, such as the slowing mortality rate, and diseases such as Ebola Virus Disease,

cholera and acute malaria. New diseases might be introduced and others better managed (through, for instance, advances in medicine), birth rates likely will change over time, and so on. Of course, the only true way to assess this is to observe a birth cohort and follow it, longitudinally, until all its members have died, and from that determine the experienced average life expectancy.

Life tables are used by actuaries, demographers and many others to study reproduction, migration, fertility and population growth.

They are also used to make relative comparisons of various measures of mortality such as death rates and the life expectancy of two or more different groups of population. The life table is accepted widely as an important tool in demographic and public health studies. Life table is also referred to as the barometer of population, which is used to make projections of population size and characteristics.

Life tables and life expectancy can be used in many areas of applications that go beyond vital statistics, especially in business applications and assessments of risk – actuarial tables, battery life, hospital stays, or circumstances where binary status changes (on/off, yes/no) can be measured by duration and summarized by cohort.

Again, what do changes in life expectancy at birth actually reflect? An increase in life expectancy generally means decreases among the age-specific death rates within a population. Those decreases could be caused by any number of reasons: a reduction in infectious diseases, fewer accidents or other preventable external causes, or any health-related actions that would contribute to a decrease in mortality (smoking cessation, use of condoms, increased seat-belt usage, etc.). In other words, changes in life expectancy are multi-factorial and rarely due primarily to one or two causes.

In this respect, life expectancy is similar to infant mortality, fertility rates and other summary measures where many cause-and-effect relationships could be reflected in their values. Hence, life expectancy should be factored in with other measures and data, such as death rates by cause and age, access to and affordability of health care, and environmental conditions, when assessing the health of a population.

Life expectancy is not the same as life span. Conceptually, life span is the theoretical temporal limit of a single human life.

Besides life expectancy, life tables can define the probability of surviving. For example, in the male abridged life tables for Sierra Leone (table 3.2.), what is the probability of a male surviving to age 65? The answer is

$$\frac{l_{65}}{l_0} = \frac{32,756}{100,000} = 0.32756$$

REFERENCES

Note: This is not an exhaustive list of publications but a selected few to be used as a starting point for further research on common life tables and life expectancy.

Arias E., Curtin L. R., Wei R. and Anderson R. 2008. United States Life Tables. U.S. Dept. of Health and Human Services, National Centre for Health Statistics, National Vital Statistics Reports, 57:1. U. S. Decennial Life Tables for 1999-2001.

Ahmad, O. B., Lapez, A. D. & Inoue, M. 2000. 'The decline in child mortality. A reappraisal', *Bulletin of the World Health Organization* 78: 1175-1191.

Brass, W. 1971. 'On the scale of mortality', in W. Brass (ed.), *Biological Aspects of Demography*, Taylor & Francis, London.

Coale, A and P. Demeny. 1966. *Regional Model Life Tables and Stable Populations*, Princeton University Press, Princeton.

Coale, A. and Guo, G. 1989. 'Revised regional model life tables at very low levels of mortality', *Population Index* 55(4): 613-643.

Coale, Ansley J. & Demeny, P. 1966. *Regional Model Life Tables and Stable Populations*. Demeny, P. and Shorter, F. 1965. *Estimating Turkish Mortality, Fertility and Age Structure*. Statistics Institute, Istanbul University, Istanbul.

Ewbank, D. J., de Leon, G. & Stoto, M. 1983. 'A reducible four-parameter life table system', *Population Studies* 37:105-127.

Ferguson, B. D. 2002. *ModMatch*. An algorithm for matching a modified logit system life table to selected life table functions vol. 1. World Health Organization, Geneva. Available at <http://www3.who.int/whosis/life>.

Grevillea, T.N.E., Bayo, F. and Foster, R.S. 1975. 'United States Life Tables by Causes of Death: 1969-71'. U.S. Dept. of Health and Human Services, National Center for Health statistics, U.S. Decennial Life Tables for 1969-71,1:5.

Gunasekera, H.R. *Life Tables for Sri Lanka and Districts, 2000–2002*. Department of Census and Statistics.

Guillot, M. "Life Tables" entry in Volume 2 of the *Encyclopedia of Population*, (ed.) Paul Demeny & Geoffrey McNicoll. Macmillan Reference USA, New York.

Hytti H. & Likka, N. 2006. 'Monitoring the employment strategy and duration of active working life'. Hill, K., Pande, R., Mahy, M. & Jones, G. 1999. *Trends in Child Mortality in the Developing World: 1960-1996*. UNICEF, Division of Evaluation and Planning. New York.

International Development Research Center. 2002. *Population and Health in Developing Countries*. Volume 1: *Population, Health and Survival at INDEPTH Sites*, Ottawa: IDRC.

Kamara, J.A.L, Turay, S. & Samuel, B. 2004, 'Life Tables for Sierra Leone', Statistics Sierra Leone, Sierra Leone.

King, G. 1902. 'Statistics applications of mortality table' in David P. Smith and Nathan Keyfitz, *Mathematical Demography: Selected Papers*, second, revised edition.

REFERENCES



Kochanek K.D., Maurer J.D., & Rosenberg, H.M. 'Causes of Death contributing to Changes in Life Expectancy'. U.S. Dept. of Health and Human Services, National Center for Health Statistics, Vital and Health Statistics 1994, 20:23.

Lopez, A. D., Ahmad, O. B., Guillot, M., Ferguson, B.D. et al. 2002. World Mortality in 200: Life Tables for 191 Countries. World Health Organization, Geneva.

Preston, S.H., Keyfitz, N. & Schoen, R. 1972. Causes of Death: Life Tables for National Populations. Academy Press, New York.

Schoen R. 1978. 'Calculating Life Tables by Estimating Chiang's from Observed Rates'. Demography 15, 625-635.

United Nations. 1955. Age and Sex patterns of Mortality: Model Life Tables for Under-developed Countries. United Nations, New York.

United Nations. 1981. Model Life Tables for Developing Countries. United Nations, New York.

United Nations. 1983. Manual X: Indirect Techniques for Demographic Estimation. United Nations, New York.

van der Meulen, A. Statistics Methods. 2012. (201208); "Life tables and Survival analysis". Heerlen, The Hague.

Wachter, K.W. & Le Bras, H. Demographic Research Monographs: A Series of the Max Planck Institute for Demographic Research. Springer, New York. Available at www.demor.mpg.de/books/, accessed 13 June 2017.

Wunsch, G.J. & Termote, M.G. (1978). Introduction to demographic analysis; principles and methods. Plenum Press, New York.

GLOSSARY

Age-specific death rate: The total number of deaths per year per 1,000 population of a given age or age group.

Age: A person's age at any given time is the time elapsed since the person's birth. Age in complete years (or 'age at last birthday') is the greatest integer less than age.

Brass Growth Balance Equation: A method to assess the completeness of deaths recorded in a census from the question on the number of deaths in a household during the 12 months preceding the census. It is based on the mathematical relationship between the age distribution of deaths and the age distribution of the population.

Children ever born: The lifetime fertility experience of women 15 years and above. It is the total number of children a woman has given birth to in her lifetime.

Child mortality ($4q_1$): The probability of a child dying between their first and fifth birthday.

Child mortality rate: The number of children that die between 1 and 4 years of age divided by the number of children alive at age 1, multiplied by 1,000.

Infant mortality: Deaths of children before attaining exact age 1.

Life expectancy: The average number of additional years that a person could expect to live if current mortality levels were to continue for the rest of that person's life.

Life expectancy at birth: The average number of years that a newborn baby is expected to live if the mortality conditions of the year corresponding to the life table remain constant.

Life table: A tabular display of life expectancy and the probability of dying at each age (or age group) for a given population, according to the age-specific death rates prevailing at that time. The life table gives an organized, complete picture of a population's mortality.

APPENDICES



Appendix 1 Both Sexes Abridged Life Table, Sierra Leone 2015

Males abridged life table, Sierra Leone 2015

Age	nM_x	na_x	nq_x	l_x	nd_x	nL_x	${}_5P_x$	T_x	e_x
0	0.0504	0.189	0.0484	100000	4844	96069	0.91929	4952753	49.5
1	0.0202	1.684	0.0774	95156.15	7361	363575	0.94376	4856683	51.0
5	0.0048	2.500	0.0236	87795.59	2074	433792	0.97805	4493108	51.2
10	0.0041	2.500	0.0202	85721.23	1734	424271	0.97605	4059316	47.4
15	0.0056	2.500	0.0278	83987.31	2331	414109	0.96810	3635045	43.3
20	0.0074	2.500	0.0362	81656.21	2954	400897	0.95713	3220936	39.4
25	0.0102	2.500	0.0498	78702.47	3921	383711	0.94389	2820039	35.8
30	0.0130	2.500	0.0627	74781.86	4691	362182	0.93633	2436328	32.6
35	0.0134	2.500	0.0647	70090.96	4533	339123	0.92356	2074146	29.6
40	0.0186	2.500	0.0890	65558.11	5836	313200	0.91077	1735024	26.5
45	0.0187	2.500	0.0895	59721.81	5343	285251	0.89347	1421824	23.8
50	0.0267	2.500	0.1253	54378.71	6812	254864	0.87960	1136572	20.9
55	0.0244	2.500	0.1148	47566.75	5462	224179	0.84955	881708.8	18.5
60	0.0422	2.500	0.1907	42104.69	8029	190452	0.81622	657530.2	15.6
65	0.0384	2.500	0.1752	34075.94	5972	155451	0.77440	467078.6	13.7
70	0.0669	2.500	0.2866	28104.3	8056	120381	0.71182	311628	11.1
75	0.0679	2.500	0.2903	20048.24	5820	85690	0.64455	191246.6	9.5
80	0.1152	2.500	0.4472	14227.77	6363	55231	0.54247	105556.6	7.4
85	0.1250	2.500	0.4762	7864.807	3745	29962	0.47950	50325.15	6.4
90	0.1735	2.500	0.6051	4119.841	2493	14367	0.36438	20363.53	4.9
95	0.2215	2.500	0.7128	1626.806	1160	5235	0.12707	5996.914	3.7
100	0.6131	1.631	1.0000	467.1606	467	762		761.9973	1.6

Source: Projected from 2015 Sierra Leone population and housing census data



Appendix 2 Males Abridged Life Table, Sierra Leone 2015

Males abridged life table, Sierra Leone 2015									
Age	nM_x	na_x	nq_x	l_x	nd_x	nL_x	${}_5P_x$	T_x	e_x
0	0.053278	0.189	0.0511	100000	5107	95860	0.915094	4830993	48.3
1	0.021546	1.705	0.0821	94892.8	7793	361687	0.940104	4735133	49.9
5	0.004982	2.500	0.0246	87099.9	2143	430142	0.976827	4373445	50.2
10	0.004389	2.500	0.0217	84956.82	1844	420174	0.975495	3943304	46.4
15	0.005549	2.500	0.0274	83112.82	2274	409878	0.9685	3523130	42.4
20	0.00728	2.500	0.0358	80838.34	2890	396967	0.9583	3113252	38.5
25	0.009809	2.500	0.0479	77948.32	3731	380413	0.946068	2716285	34.8
30	0.012435	2.500	0.0603	74216.99	4475	359897	0.932917	2335872	31.5
35	0.015434	2.500	0.0743	69741.75	5182	335754	0.921545	1975975	28.3
40	0.017306	2.500	0.0829	64559.76	5355	309412	0.907071	1640221	25.4
45	0.021901	2.500	0.1038	59205.13	6147	280659	0.890766	1330809	22.5
50	0.024465	2.500	0.1153	53058.41	6116	250001	0.866612	1050150	19.8
55	0.033337	2.500	0.1539	46942.13	7223	216654	0.836305	800148.7	17.0
60	0.038432	2.500	0.1753	39719.51	6963	181189	0.79426	583494.6	14.7
65	0.055226	2.500	0.2426	32756.08	7948	143911	0.742278	402305.6	12.3
70	0.064481	2.500	0.2776	24808.41	6888	106822	0.679197	258394.4	10.4
75	0.093994	2.500	0.3805	17920.43	6820	72553	0.596911	151572.3	8.5
80	0.112649	2.500	0.4395	11100.86	4879	43308	0.519446	79019.04	7.1
85	0.153188	2.500	0.5538	6222.282	3446	22496	0.422744	35711.2	5.7
90	0.183834	2.500	0.6297	2776.155	1748	9510	0.341093	13215.11	4.8
95	0.233747	2.500	0.7377	1027.881	758	3244	0.124479	3705.021	3.6
100	0.58467	1.710	1.0000	269.6482	270	461		461.197	1.7

Source: Projected from 2015 Sierra Leone population and housing census data



Appendix 3 Females Abridged Life Table, Sierra Leone 2015

Females Abridged Life Table, Sierra Leone 2015									
Age	nM_x	na_x	nq_x	l_x	nd_x	nL_x	${}_5P_x$	T_x	e_x
0	Life Tables by District	0.187	0.0458	100000	4578	96280	0.923509	5080537	50.8
1	0.018946	1.659	0.0726	95422.1	6924	365475	0.947425	4984257	52.2
5	0.004581	2.500	0.0226	88497.64	2004	437478	0.979309	4618782	52.2
10	0.003774	2.500	0.0187	86493.58	1617	428426	0.976482	4181304	48.3
15	0.005769	2.500	0.0284	84876.87	2414	418350	0.966793	3752878	44.2
20	0.007771	2.500	0.0381	82463.26	3143	404458	0.955549	3334528	40.4
25	0.010475	2.500	0.0510	79320.05	4048	386480	0.944169	2930069	36.9
30	0.012559	2.500	0.0609	75271.84	4583	364902	0.938723	2543590	33.8
35	0.012732	2.500	0.0617	70688.96	4361	342542	0.925813	2178688	30.8
40	0.018301	2.500	0.0875	66327.85	5804	317130	0.912041	1836146	27.7
45	0.018511	2.500	0.0885	60524.14	5354	289235	0.898186	1519016	25.1
50	0.024732	2.500	0.1165	55170.05	6425	259787	0.889272	1229780	22.3
55	0.021994	2.500	0.1042	48744.9	5081	231022	0.865133	969992.7	19.9
60	0.036933	2.500	0.1691	43663.73	7382	199864	0.837918	738971.2	16.9
65	0.033296	2.500	0.1537	36282.04	5576	167470	0.802593	539106.8	14.9
70	0.056899	2.500	0.2491	30706	7648	134410	0.746592	371636.7	12.1
75	0.059556	2.500	0.2592	23058.16	5976	100350	0.67996	237226.3	10.3
80	0.100682	2.500	0.4022	17081.74	6870	68234	0.579357	136876.5	8.0
85	0.116638	2.500	0.4515	10211.8	4611	39532	0.506734	68642.68	6.7
90	0.159193	2.500	0.5694	5600.909	3189	20032	0.394602	29110.9	5.2
95	0.210253	2.500	0.6891	2411.933	1662	7905	0.129323	9078.799	3.8
100	0.638743	1.566	1.0000	749.9472	750	1174		1174.098	1.6

Source: Projected from 2015 Sierra Leone population and housing census data

Life Tables by District



Appendix 4 Both Sexes Abridged Life Table, Sierra Leone Rural 2015

Both Sexes Abridged Life Table, Sierra Leone Rural 2015									
Age	nM_x	na_x	nq_x	l_x	nd_x	nL_x	${}_5P_x$	T_x	e_x
0	0.0566	0.212	0.0542	100000	5416	95735	0.91061	4824603	48.2
1	0.0222	1.645	0.0842	94584.31	7968	359572	0.93951	4728868	50.0
5	0.0050	2.500	0.0246	86616.48	2127	427765	0.97665	4369295	50.4
10	0.0045	2.500	0.0221	84489.57	1869	417775	0.97359	3941530	46.7
15	0.0063	2.500	0.0308	82620.37	2544	406742	0.96384	3523756	42.6
20	0.0085	2.500	0.0417	80076.24	3339	392034	0.95170	3117014	38.9
25	0.0114	2.500	0.0552	76737.51	4236	373097	0.93887	2724980	35.5
30	0.0140	2.500	0.0674	72501.41	4887	350289	0.93435	2351882	32.4
35	0.0132	2.500	0.0638	67614.24	4311	327293	0.92265	2001593	29.6
40	0.0193	2.500	0.0919	63302.8	5815	301976	0.91013	1674301	26.4
45	0.0183	2.500	0.0877	57487.55	5040	274838	0.89184	1372325	23.9
50	0.0279	2.500	0.1306	52447.81	6851	245112	0.87758	1097486	20.9
55	0.0240	2.500	0.1130	45596.96	5152	215104	0.85110	852374.4	18.7
60	0.0418	2.500	0.1894	40444.69	7659	183075	0.81980	637270.3	15.8
65	0.0369	2.500	0.1689	32785.39	5536	150086	0.77782	454195.1	13.9
70	0.0668	2.500	0.2863	27248.93	7802	116740	0.71449	304109.3	11.2
75	0.0663	2.500	0.2844	19446.94	5530	83409	0.64679	187369.6	9.6
80	0.1159	2.500	0.4494	13916.76	6254	53948	0.54540	103960.3	7.5
85	0.1208	2.500	0.4640	7662.473	3556	29423	0.48881	50012.24	6.5
90	0.1711	2.500	0.5992	4106.833	2461	14382	0.37363	20588.98	5.0
95	0.2127	2.500	0.6942	1646.107	1143	5374	0.13421	6206.629	3.8
100	0.6043	1.655	1.0000	503.3506	503	833		832.9851	1.7

Source: Projected from 2015 Sierra Leone population and housing census data



Appendix 5 Both Sexes Abridged Life Table, Sierra Leone Urban 2015

Both Sexes Abridged Life Table, Sierra Leone Urban 2015									
Age	nM_x	na_x	nq_x	l_x	nd_x	nL_x	${}_5P_x$	T_x	e_x
0	0.040669	0.168	0.0393	100000	3934	96727	0.933397	5149457	51.5
1	0.016574	1.669	0.0638	96066.23	6132	369972	0.953001	5052730	52.6
5	0.004414	2.500	0.0218	89934.37	1963	444764	0.980309	4682759	52.1
10	0.003532	2.500	0.0175	87971.31	1540	436006	0.979308	4237994	48.2
15	0.004845	2.500	0.0239	86431.27	2069	426985	0.972747	3801988	44.0
20	0.006226	2.500	0.0307	84362.65	2586	415348	0.96291	3375003	40.0
25	0.008942	2.500	0.0437	81776.69	3576	399943	0.949875	2959655	36.2
30	0.011694	2.500	0.0568	78200.49	4443	379896	0.938783	2559712	32.7
35	0.013626	2.500	0.0659	73757.82	4860	356640	0.924899	2179816	29.6
40	0.017747	2.500	0.0850	68898.12	5854	329856	0.911628	1823176	26.5
45	0.019308	2.500	0.0921	63044.22	5806	300706	0.895878	1493320	23.7
50	0.024937	2.500	0.1174	57238.09	6718	269396	0.882629	1192615	20.8
55	0.024939	2.500	0.1174	50520.22	5930	237777	0.847168	923218.9	18.3
60	0.042724	2.500	0.1930	44590.39	8606	201437	0.810314	685442.4	15.4
65	0.040911	2.500	0.1856	35984.24	6678	163227	0.768762	484005.8	13.5
70	0.067101	2.500	0.2873	29306.53	8420	125483	0.706621	320778.9	10.9
75	0.071114	2.500	0.3019	20886.52	6306	88669	0.640606	195296.3	9.4
80	0.113399	2.500	0.4418	14580.95	6441	56802	0.536902	106627.6	7.3
85	0.133806	2.500	0.5013	8139.72	4081	30497	0.4585	49825.9	6.1
90	0.180577	2.500	0.6221	4059.058	2525	13983	0.340529	19328.95	4.8
95	0.244358	2.500	0.7585	1534.077	1164	4762	0.109341	5346.113	3.5
100	0.633903	1.578	1.0000	370.5484	371	585		584.5505	1.6

Source: Projected from 2015 Sierra Leone population and housing census data



Appendix 6 Both Sexes Abridged Life Table, Kailahun District 2015

Both Sexes Abridged Life Table, Kailahun District 2015									
Age	nM_x	na_x	nq_x	l_x	nd_x	nL_x	${}_5P_x$	T_x	e_x
0	0.0630	0.223	0.0600	100000	6002	95334	0.89648	3791686	37.9
1	0.0279	1.657	0.1048	93998.25	9853	352904	0.92229	3696352	39.3
5	0.0071	2.500	0.0348	84145.09	2929	413403	0.96624	3343449	39.7
10	0.0066	2.500	0.0327	81216.08	2654	399446	0.96356	2930046	36.1
15	0.0082	2.500	0.0403	78562.12	3169	384889	0.94635	2530600	32.2
20	0.0140	2.500	0.0675	75393.48	5090	364241	0.92142	2145711	28.5
25	0.0189	2.500	0.0904	70303.03	6358	335621	0.89467	1781470	25.3
30	0.0259	2.500	0.1217	63945.32	7783	300269	0.88123	1445849	22.6
35	0.0245	2.500	0.1154	56162.11	6482	264605	0.86007	1145581	20.4
40	0.0366	2.500	0.1676	49679.95	8328	227580	0.83600	880975.4	17.7
45	0.0347	2.500	0.1596	41351.92	6601	190256	0.79270	653395.7	15.8
50	0.0608	2.500	0.2640	34750.51	9175	150815	0.75894	463139.7	13.3
55	0.0469	2.500	0.2099	25575.53	5367	114460	0.72445	312324.6	12.2
60	0.0874	2.500	0.3587	20208.49	7249	82921	0.66218	197864.5	9.8
65	0.0721	2.500	0.3053	12959.84	3956	54908	0.61736	114943.7	8.9
70	0.1312	2.500	0.4940	9003.51	4448	33898	0.49679	60035.3	6.7
75	0.1411	2.500	0.5214	4555.778	2375	16840	0.40880	26137.08	5.7
80	0.2334	2.500	0.7370	2180.382	1607	6884	0.27160	9296.684	4.3
85	0.2133	2.500	0.6956	573.3671	399	1870	0.26220	2412.311	4.2
90	0.3121	2.500	0.8765	174.5452	153	490	0.10758	542.5304	3.1
95	0.4175	2.500	1.0214	21.55737	22	53	-0.00891	52.27405	2.4
100	0.9909	1.009	1.0000	-0.46147	0	0		-0.46569	1.0

Source: Projected from 2015 Sierra Leone population and housing census data



Appendix 7 Males Abridged Life Table, Kailahun District 2015

Males Abridged Life Table, Kailahun District 2015									
Age	nM_x	na_x	nq_x	l_x	nd_x	nL_x	${}_5P_x$	T_x	e_x
0	0.063193	0.216	0.0602	100000	6021	95277	0.892489	3748211	37.5
1	0.030609	1.678	0.1143	93979.15	10743	350967	0.915567	3652934	38.9
5	0.007455	2.500	0.0366	83236.24	3046	408567	0.96467	3301966	39.7
10	0.006921	2.500	0.0340	80190.4	2728	394132	0.963808	2893400	36.1
15	0.007839	2.500	0.0384	77462.45	2978	379868	0.949155	2499268	32.3
20	0.013168	2.500	0.0637	74484.62	4748	360553	0.926564	2119400	28.5
25	0.01749	2.500	0.0838	69736.76	5843	334076	0.893766	1758847	25.2
30	0.027975	2.500	0.1307	63893.63	8353	298586	0.873171	1424771	22.3
35	0.026062	2.500	0.1223	55540.66	6795	260716	0.859231	1126185	20.3
40	0.035201	2.500	0.1618	48745.94	7886	224016	0.843137	865468.4	17.8
45	0.032669	2.500	0.1510	40860.36	6170	188876	0.797868	641452.6	15.7
50	0.060391	2.500	0.2623	34689.98	9101	150698	0.764054	452576.8	13.0
55	0.044483	2.500	0.2002	25589.18	5122	115141	0.716586	301878.9	11.8
60	0.096126	2.500	0.3875	20467.38	7931	82509	0.63586	186737.4	9.1
65	0.077894	2.500	0.3260	12536.13	4087	52464	0.589342	104228.7	8.3
70	0.146552	2.500	0.5363	8449.492	4531	30919	0.458364	51764.63	6.1
75	0.152941	2.500	0.5532	3918.219	2168	14172	0.368515	20845.35	5.3
80	0.270417	2.500	0.8067	1750.693	1412	5223	0.215275	6673.073	3.8
85	0.201939	2.500	0.6710	338.3853	227	1124	0.268613	1450.376	4.3
90	0.337349	2.500	0.9150	111.342	102	302	0.079229	326.0582	2.9
95	0.390756	2.500	0.9883	9.460432	9	24	0.005176	24.05205	2.5
100	0.888268	1.126	1.0000	0.11059	0	0		0.1245	1.1

Source: Projected from 2015 Sierra Leone population and housing census data



Appendix 8 Females Abridged Life Table, Kailahun District 2015

Females Abridged Life Table, Kailahun District 2015									
Age	nM_x	na_x	nq_x	l_x	nd_x	nL_x	${}_5P_x$	T_x	e_x
0	0.062719	0.229	0.0598	100000	5983	95390	0.900475	3831925	38.3
1	0.025294	1.636	0.0955	94017.2	8976	354847	0.928806	3736535	39.7
5	0.006719	2.500	0.0330	85041.57	2810	418183	0.967855	3381687	39.8
10	0.006343	2.500	0.0312	82231.71	2567	404741	0.963326	2963504	36.0
15	0.008644	2.500	0.0423	79664.57	3370	389897	0.943683	2558763	32.1
20	0.014711	2.500	0.0709	76294.33	5413	367939	0.917209	2168866	28.4
25	0.020066	2.500	0.0955	70881.4	6772	337477	0.895319	1800927	25.4
30	0.024356	2.500	0.1148	64109.48	7359	302150	0.88765	1463450	22.8
35	0.023189	2.500	0.1096	56750.36	6219	268203	0.860169	1161300	20.5
40	0.038066	2.500	0.1738	50530.88	8782	230700	0.827453	893096.9	17.7
45	0.037407	2.500	0.1710	41749.07	7141	190893	0.785904	662397	15.9
50	0.06137	2.500	0.2660	34608.24	9207	150024	0.752564	471503.7	13.6
55	0.049969	2.500	0.2221	25401.28	5642	112902	0.73023	321479.9	12.7
60	0.079344	2.500	0.3311	19759.71	6541	82445	0.688782	208577.5	10.6
65	0.065541	2.500	0.2816	13218.21	3722	56786	0.648271	126132.7	9.5
70	0.115925	2.500	0.4494	9496.379	4268	36813	0.539647	69346.19	7.3
75	0.126409	2.500	0.4803	5228.828	2511	19866	0.453933	32533.17	6.2
80	0.202713	2.500	0.6727	2717.583	1828	9018	0.314981	12667.15	4.7
85	0.226345	2.500	0.7227	889.5513	643	2840	0.252514	3649.314	4.1
90	0.287703	2.500	0.8367	246.6292	206	717	0.131067	808.8625	3.3
95	0.45679	2.500	1.0663	40.27278	43	94	-0.02621	91.60764	2.3
100	1.111842	0.899	1.0000	-2.66938	-3	-2		-2.40086	0.9

Source: Projected from 2015 Sierra Leone population and housing census data



Appendix 9 Both Sexes Abridged Life Table, Kenema District 2015

Both Sexes Abridged Life Table, Kenema District 2015									
Age	nM_x	na_x	nq_x	l_x	nd_x	nL_x	${}_5P_x$	T_x	e_x
0	0.0605	0.216	0.0578	100000	5776	95471	0.90653	4417835	44.2
1	0.0228	1.662	0.0867	94224.37	8170	357796	0.93674	4322364	45.9
5	0.0053	2.500	0.0264	86054.31	2271	424595	0.97600	3964568	46.1
10	0.0044	2.500	0.0215	83783.61	1805	414406	0.97275	3539973	42.3
15	0.0067	2.500	0.0331	81978.77	2713	403112	0.95869	3125567	38.1
20	0.0102	2.500	0.0498	79266.09	3949	386459	0.94182	2722455	34.3
25	0.0139	2.500	0.0670	75317.37	5046	363973	0.92680	2335996	31.0
30	0.0166	2.500	0.0799	70271.87	5611	337331	0.91908	1972023	28.1
35	0.0171	2.500	0.0821	64660.48	5308	310033	0.90061	1634692	25.3
40	0.0251	2.500	0.1182	59352.81	7018	279220	0.88597	1324659	22.3
45	0.0231	2.500	0.1093	52335.12	5718	247381	0.86410	1045439	20.0
50	0.0362	2.500	0.1658	46617.32	7729	213763	0.83827	798057.9	17.1
55	0.0340	2.500	0.1568	38887.91	6099	179191	0.79552	584294.9	15.0
60	0.0600	2.500	0.2610	32788.52	8557	142550	0.74994	405103.8	12.4
65	0.0533	2.500	0.2353	24231.6	5702	106904	0.69789	262553.5	10.8
70	0.0967	2.500	0.3895	18529.85	7217	74607	0.60970	155649.9	8.4
75	0.0974	2.500	0.3917	11313.07	4431	45488	0.52273	81042.56	7.2
80	0.1789	2.500	0.6180	6882.22	4253	23778	0.36647	35554.34	5.2
85	0.2034	2.500	0.6742	2629.062	1773	8714	0.29495	11776.13	4.5
90	0.2665	2.500	0.7997	856.5086	685	2570	0.18319	3062.205	3.6
95	0.3287	2.500	0.9022	171.5578	155	471	0.04309	492.0396	2.9
100	0.7913	1.264	1.0000	16.77694	17	21		21.20276	1.3

Source: Projected from 2015 Sierra Leone population and housing census data



Appendix 10 Males Abridged Life Table, Kenema District 2015

Males Abridged Life Table, Kenema District 2015									
Age	nM_x	na_x	nq_x	l_x	nd_x	nL_x	${}_5P_x$	T_x	e_x
0	0.066382	0.224	0.0631	100000	6313	95101	0.900038	4336186	43.4
1	0.023967	1.669	0.0908	93687.02	8506	354918	0.932371	4241084	45.3
5	0.006024	2.500	0.0297	85180.67	2527	419585	0.973694	3886167	45.6
10	0.00462	2.500	0.0228	82653.26	1888	408547	0.972015	3466582	41.9
15	0.006763	2.500	0.0333	80765.61	2686	397114	0.960551	3058034	37.9
20	0.009387	2.500	0.0459	78079.97	3581	381448	0.940104	2660921	34.1
25	0.0155	2.500	0.0746	74499.37	5558	358601	0.91774	2279472	30.6
30	0.018964	2.500	0.0905	68941.06	6241	329102	0.911319	1920871	27.9
35	0.018115	2.500	0.0866	62699.93	5433	299917	0.901153	1591769	25.4
40	0.023774	2.500	0.1122	57267.06	6425	270272	0.894148	1291851	22.6
45	0.020765	2.500	0.0987	50841.58	5018	241663	0.867369	1021580	20.1
50	0.037225	2.500	0.1703	45823.57	7803	209611	0.838494	779916.7	17.0
55	0.032651	2.500	0.1509	38020.83	5739	175758	0.800239	570305.7	15.0
60	0.059049	2.500	0.2573	32282.21	8305	140648	0.749617	394548.1	12.2
65	0.054833	2.500	0.2411	23977.06	5781	105432	0.688001	253899.9	10.6
70	0.101695	2.500	0.4054	18195.87	7377	72538	0.601883	148467.6	8.2
75	0.09562	2.500	0.3859	10819.16	4175	43659	0.51246	75930.02	7.0
80	0.193959	2.500	0.6531	6644.491	4340	22374	0.330341	32270.89	4.9
85	0.223724	2.500	0.7174	2304.941	1654	7391	0.274518	9897.303	4.3
90	0.242131	2.500	0.7541	651.4206	491	2029	0.221337	2506.398	3.8
95	0.313253	2.500	0.8784	160.1532	141	449	0.059451	477.4639	3.0
100	0.686192	1.457	1.0000	19.47809	19	28		28.38575	1.5

Source: Projected from 2015 Sierra Leone population and housing census data



Appendix 11 Females Abridged Life Table, Kenema District 2015

Females Abridged Life Table, Kenema District 2015

Age	nM_x	na_x	nq_x	l_x	nd_x	nL_x	${}_5P_x$	T_x	e_x
0	0.054605	0.207	0.0523	100000	5234	95850	0.912971	4488789	44.9
1	0.021725	1.648	0.0827	94766.12	7835	360636	0.941115	4392939	46.4
5	0.004688	2.500	0.0232	86931.44	2014	429622	0.978288	4032303	46.4
10	0.004085	2.500	0.0202	84917.26	1717	420294	0.973488	3602681	42.4
15	0.006697	2.500	0.0329	83200.28	2740	409151	0.957172	3182388	38.2
20	0.010901	2.500	0.0531	80460.09	4269	391628	0.943084	2773237	34.5
25	0.012582	2.500	0.0610	76191.1	4647	369338	0.934145	2381609	31.3
30	0.01473	2.500	0.0710	71544.18	5082	345016	0.925762	2012270	28.1
35	0.016165	2.500	0.0777	66462.06	5163	319403	0.899561	1667255	25.1
40	0.026692	2.500	0.1251	61298.94	7669	287322	0.875295	1347852	22.0
45	0.026495	2.500	0.1242	53629.87	6663	251491	0.85918	1060530	19.8
50	0.034723	2.500	0.1597	46966.72	7503	216076	0.837846	809038.8	17.2
55	0.035971	2.500	0.1650	39463.85	6512	181039	0.789567	592962.4	15.0
60	0.061049	2.500	0.2648	32951.66	8726	142942	0.750639	411923.7	12.5
65	0.05155	2.500	0.2283	24225.21	5531	107298	0.708935	268981.5	11.1
70	0.091512	2.500	0.3724	18694.01	6961	76067	0.617317	161683.5	8.6
75	0.099723	2.500	0.3991	11732.91	4683	46958	0.531248	85616.18	7.3
80	0.16523	2.500	0.5846	7050.151	4122	24946	0.403613	38658.53	5.5
85	0.181672	2.500	0.6247	2928.304	1829	10069	0.315363	13712.4	4.7
90	0.292308	2.500	0.8444	1099.126	928	3175	0.143693	3643.824	3.3
95	0.349462	2.500	0.9326	170.9751	159	456	0.026276	468.5726	2.7
100	0.936416	1.068	1.0000	11.52917	12	12		12.31201	1.1

Source: Projected from 2015 Sierra Leone population and housing census data



Appendix 12 Both Sexes Abridged Life Table, Kono District 2015

Both Sexes Abridged Life Table, Kono District 2015									
Age	nM_x	na_x	nq_x	l_x	nd_x	nL_x	${}_5P_x$	T_x	e_x
0	0.0442	0.171	0.0426	100000	4261	96469	0.93370	5497479	55.0
1	0.0147	1.697	0.0570	95738.5	5459	370383	0.95796	5401010	56.4
5	0.0037	2.500	0.0185	90279.56	1668	447227	0.98503	5030627	55.7
10	0.0023	2.500	0.0114	88611.25	1010	440531	0.98473	4583400	51.7
15	0.0039	2.500	0.0192	87600.98	1681	433802	0.97867	4142869	47.3
20	0.0048	2.500	0.0235	85919.68	2020	424550	0.96872	3709068	43.2
25	0.0080	2.500	0.0392	83900.15	3293	411269	0.95695	3284518	39.1
30	0.0096	2.500	0.0470	80607.54	3789	393566	0.95057	2873249	35.6
35	0.0107	2.500	0.0520	76818.74	3993	374112	0.93924	2479683	32.3
40	0.0145	2.500	0.0700	72825.96	5100	351381	0.92849	2105572	28.9
45	0.0152	2.500	0.0731	67726.28	4951	326253	0.91155	1754191	25.9
50	0.0222	2.500	0.1050	62775.02	6592	297395	0.89050	1427938	22.7
55	0.0243	2.500	0.1145	56182.81	6434	264830	0.86782	1130543	20.1
60	0.0329	2.500	0.1521	49749.25	7568	229826	0.84840	865712.9	17.4
65	0.0327	2.500	0.1510	42181.1	6368	194985	0.79944	635887.1	15.1
70	0.0595	2.500	0.2590	35813	9274	155880	0.72824	440901.8	12.3
75	0.0676	2.500	0.2890	26538.94	7671	113518	0.68553	285022	10.7
80	0.0849	2.500	0.3502	18868.27	6609	77820	0.63518	171503.9	9.1
85	0.0960	2.500	0.3872	12259.77	4748	49430	0.57813	93683.83	7.6
90	0.1258	2.500	0.4784	7512.251	3594	28577	0.46232	44253.78	5.9
95	0.1932	2.500	0.6513	3918.494	2552	13212	0.15725	15676.91	4.0
100	0.5542	1.804	1.0000	1366.218	1366	2465		2465.133	1.8

Source: Projected from 2015 Sierra Leone population and housing census data



Appendix 13 Males Abridged Life Table, Kono District 2015

Males Abridged Life Table, Kono District 2015									
Age	nM_x	na_x	nq_x	l_x	nd_x	nL_x	${}_5P_x$	T_x	e_x
0	0.048304	0.176	0.0465	100000	4645	96172	0.927299	5336856	53.4
1	0.016632	1.719	0.0641	95354.52	6112	367477	0.952357	5240684	55.0
5	0.004215	2.500	0.0209	89242.63	1861	441560	0.983717	4873207	54.6
10	0.002336	2.500	0.0116	87381.27	1015	434370	0.985015	4431647	50.7
15	0.003714	2.500	0.0184	86366.73	1589	427861	0.978896	3997277	46.3
20	0.00483	2.500	0.0239	84777.63	2023	418831	0.967313	3569416	42.1
25	0.008524	2.500	0.0417	82754.82	3453	405141	0.955134	3150585	38.1
30	0.009865	2.500	0.0481	79301.42	3817	386964	0.947125	2745445	34.6
35	0.011915	2.500	0.0579	75484.02	4367	366503	0.937163	2358481	31.2
40	0.014106	2.500	0.0681	71117.06	4845	343473	0.926286	1991978	28.0
45	0.016604	2.500	0.0797	66271.97	5282	318154	0.904861	1648506	24.9
50	0.023707	2.500	0.1119	60989.51	6825	287885	0.885199	1330352	21.8
55	0.025094	2.500	0.1181	54164.48	6395	254836	0.860441	1042467	19.2
60	0.035714	2.500	0.1639	47769.75	7831	219271	0.844539	787631.4	16.5
65	0.031343	2.500	0.1453	39938.65	5804	185183	0.775276	568360.4	14.2
70	0.075517	2.500	0.3176	34134.5	10842	143568	0.69242	383177.5	11.2
75	0.068622	2.500	0.2929	23292.67	6822	99409	0.668385	239609.6	10.3
80	0.095789	2.500	0.3864	16471.04	6365	66444	0.606808	140200.4	8.5
85	0.101329	2.500	0.4042	10106.43	4085	40319	0.551495	73756.69	7.3
90	0.141566	2.500	0.5228	6020.996	3148	22235	0.429875	33438.12	5.6
95	0.201183	2.500	0.6693	2873.2	1923	9558	0.146765	11202.63	3.9
100	0.577922	1.730	1.0000	950.1923	950	1644		1644.153	1.7

Source: Projected from 2015 Sierra Leone population and housing census data



Appendix 14 Females Abridged Life Table, Kono District 2015

Females Abridged Life Table, Kono District 2015									
Age	nM_x	na_x	nq_x	l_x	nd_x	nL_x	${}_5P_x$	T_x	e_x
0	0.040032	0.166	0.0387	100000	3874	96770	0.940122	5682420	56.8
1	0.012892	1.670	0.0501	96126.06	4813	373291	0.963455	5585650	58.1
5	0.003255	2.500	0.0161	91313.55	1474	452883	0.986315	5212359	57.1
10	0.00225	2.500	0.0112	89839.56	1005	446685	0.98445	4759476	53.0
15	0.004033	2.500	0.0200	88834.41	1773	439739	0.978429	4312791	48.5
20	0.004697	2.500	0.0232	87061.16	2021	430253	0.969855	3873053	44.5
25	0.00759	2.500	0.0372	85040.24	3167	417284	0.958446	3442799	40.5
30	0.009424	2.500	0.0460	81873.24	3769	399944	0.953957	3025515	37.0
35	0.009427	2.500	0.0461	78104.24	3597	381529	0.941109	2625572	33.6
40	0.015013	2.500	0.0724	74507.4	5391	359060	0.932105	2244043	30.1
45	0.013029	2.500	0.0631	69116.78	4361	334682	0.921367	1884982	27.3
50	0.019996	2.500	0.0952	64756.1	6166	308365	0.898423	1550300	23.9
55	0.022968	2.500	0.1086	58589.96	6363	277042	0.877506	1241935	21.2
60	0.029664	2.500	0.1381	52226.98	7211	243106	0.852233	964892.4	18.5
65	0.034548	2.500	0.1590	45015.57	7158	207183	0.824653	721786	16.0
70	0.043158	2.500	0.1948	37857.79	7374	170854	0.765692	514602.6	13.6
75	0.066038	2.500	0.2834	30483.98	8639	130822	0.703787	343748.2	11.3
80	0.074522	2.500	0.3141	21844.8	6861	92071	0.665422	212926.3	9.7
85	0.08913	2.500	0.3644	14983.53	5461	61266	0.60984	120855.4	8.1
90	0.109756	2.500	0.4306	9522.864	4101	37362	0.495472	59589.46	6.3
95	0.185792	2.500	0.6343	5422.109	3439	18512	0.167138	22227.03	4.1
100	0.533708	1.874	1.0000	1982.712	1983	3715		3714.975	1.9

Source: Projected from 2015 Sierra Leone population and housing census data



Appendix 15 Both Sexes Abridged Life Table, Bombali District 2015

Both Sexes Abridged Life Table, Bombali District 2015

Age	nM_x	na_x	nq_x	l_x	nd_x	nL_x	${}_5P_x$	T_x	e_x
0	0.0351	0.146	0.0341	100000	3410	97089	0.94150	5562102	55.6
1	0.0149	1.717	0.0576	96589.76	5563	373660	0.95775	5465013	56.6
5	0.0038	2.500	0.0188	91026.51	1709	450861	0.98221	5091353	55.9
10	0.0034	2.500	0.0168	89317.85	1499	442842	0.97763	4640492	52.0
15	0.0057	2.500	0.0280	87819.03	2463	432938	0.96899	4197650	47.8
20	0.0069	2.500	0.0341	85356.06	2907	419513	0.96136	3764712	44.1
25	0.0089	2.500	0.0434	82449.23	3578	403302	0.95072	3345199	40.6
30	0.0114	2.500	0.0554	78871.52	4373	383426	0.94542	2941897	37.3
35	0.0110	2.500	0.0537	74498.86	3998	362498	0.93584	2558471	34.3
40	0.0156	2.500	0.0752	70500.4	5305	339240	0.92530	2195973	31.1
45	0.0154	2.500	0.0741	65195.45	4832	313898	0.91528	1856733	28.5
50	0.0202	2.500	0.0962	60363.7	5805	287305	0.90616	1542836	25.6
55	0.0191	2.500	0.0913	54558.29	4979	260343	0.89099	1255531	23.0
60	0.0275	2.500	0.1285	49578.98	6373	231963	0.87336	995187.4	20.1
65	0.0265	2.500	0.1245	43206.36	5377	202588	0.84764	763224	17.7
70	0.0406	2.500	0.1842	37828.9	6969	171722	0.81107	560635.9	14.8
75	0.0431	2.500	0.1947	30860	6008	139279	0.76259	388913.6	12.6
80	0.0680	2.500	0.2904	24851.51	7218	106213	0.70060	249634.8	10.0
85	0.0739	2.500	0.3120	17633.76	5502	74413	0.60994	143421.7	8.1
90	0.1346	2.500	0.5035	12131.53	6108	45387	0.44398	69008.44	5.7
95	0.1978	2.500	0.6618	6023.41	3986	20151	0.14690	23621.09	3.9
100	0.5871	1.703	1.0000	2037.061	2037	3470		3469.909	1.7

Source: Projected from 2015 Sierra Leone population and housing census data



Appendix 16 Males Abridged Life Table, Bombali District 2015

Males Abridged Life Table, Bombali District 2015									
Age	nM_x	na_x	nq_x	l_x	nd_x	nL_x	${}_5P_x$	T_x	e_x
0	0.037211	0.146	0.0361	100000	3607	96921	0.938155	5320801	53.2
1	0.016026	1.750	0.0619	96393.48	5964	372157	0.954437	5223880	54.2
5	0.003969	2.500	0.0197	90429.46	1777	447705	0.981391	4851724	53.7
10	0.003541	2.500	0.0175	88652.46	1556	439373	0.977235	4404019	49.7
15	0.005695	2.500	0.0281	87096.84	2445	429371	0.968858	3964645	45.5
20	0.006979	2.500	0.0343	84651.56	2903	416000	0.95934	3535274	41.8
25	0.009679	2.500	0.0472	81748.32	3863	399085	0.945509	3119275	38.2
30	0.012816	2.500	0.0621	77885.74	4836	377339	0.940032	2720190	34.9
35	0.011884	2.500	0.0577	73049.66	4215	354710	0.932143	2342851	32.1
40	0.01637	2.500	0.0786	68834.41	5413	330641	0.921046	1988141	28.9
45	0.016516	2.500	0.0793	63421.88	5030	304535	0.905903	1657500	26.1
50	0.023317	2.500	0.1102	58392.19	6433	275879	0.892922	1352965	23.2
55	0.021855	2.500	0.1036	51959.59	5384	246339	0.870863	1077086	20.7
60	0.034219	2.500	0.1576	46575.93	7341	214527	0.842103	830746.7	17.8
65	0.034366	2.500	0.1582	39235.04	6208	180654	0.806364	616219.3	15.7
70	0.053435	2.500	0.2357	33026.61	7784	145673	0.777243	435565.2	13.2
75	0.04589	2.500	0.2058	25242.56	5196	113223	0.714299	289892.3	11.5
80	0.095745	2.500	0.3863	20046.74	7743	80875	0.643922	176669.1	8.8
85	0.072503	2.500	0.3069	12303.36	3776	52077	0.573589	95793.81	7.8
90	0.17096	2.500	0.5989	8527.577	5107	29871	0.388007	43716.46	5.1
95	0.190299	2.500	0.6448	3420.824	2206	11590	0.162891	13845.45	4.0
100	0.538835	1.856	1.0000	1215.236	1215	2255		2255.303	1.9

Source: Projected from 2015 Sierra Leone population and housing census data



Appendix 17 Females Abridged Life Table, Bombali District 2015

Females Abridged Life Table, Bombali District 2015

Age	nM_x	na_x	nq_x	l_x	nd_x	nL_x	${}_5P_x$	T_x	e_x
0	0.032991	0.146	0.0321	100000	3209	97261	0.944951	5805791	58.1
1	0.013732	1.681	0.0532	96791.25	5153	375215	0.961111	5708530	59.0
5	0.003605	2.500	0.0179	91638.61	1637	454101	0.983086	5333315	58.2
10	0.003216	2.500	0.0159	90001.79	1435	446420	0.978066	4879214	54.2
15	0.005683	2.500	0.0280	88566.31	2481	436628	0.969113	4432794	50.1
20	0.006884	2.500	0.0338	86084.99	2913	423142	0.963041	3996166	46.4
25	0.008202	2.500	0.0402	83171.92	3342	407503	0.954934	3573023	43.0
30	0.010288	2.500	0.0501	79829.48	4003	389139	0.949775	3165520	39.7
35	0.010321	2.500	0.0503	75826.08	3814	369594	0.939081	2776381	36.6
40	0.014958	2.500	0.0721	72011.67	5192	347079	0.929672	2406787	33.4
45	0.014169	2.500	0.0684	66819.96	4572	322670	0.925002	2059708	30.8
50	0.017113	2.500	0.0821	62247.92	5108	298470	0.919604	1737038	27.9
55	0.016361	2.500	0.0786	57140.17	4491	274474	0.908995	1438568	25.2
60	0.022048	2.500	0.1045	52649.57	5501	249496	0.899481	1164093	22.1
65	0.020189	2.500	0.0961	47148.8	4531	224417	0.881151	914597.4	19.4
70	0.031039	2.500	0.1440	42617.95	6138	197745	0.837166	690180.5	16.2
75	0.040726	2.500	0.1848	36480.11	6742	165546	0.799054	492435.4	13.5
80	0.049624	2.500	0.2207	29738.11	6564	132280	0.737551	326889.8	11.0
85	0.075053	2.500	0.3160	23173.84	7322	97563	0.639293	194609.9	8.4
90	0.108291	2.500	0.4261	15851.44	6754	62372	0.482206	97046.7	6.1
95	0.204947	2.500	0.6776	9097.167	6164	30076	0.132638	34675.17	3.8
100	0.637755	1.568	1.0000	2933.199	2933	4599		4599.256	1.6

Source: Projected from 2015 Sierra Leone population and housing census data



Appendix 18 Both Sexes Abridged Life Table, Kambia District 2015

Both Sexes Abridged Life Table, Kambia District 2015

Age	nM_x	na_x	nq_x	l_x	nd_x	nL_x	${}_5P_x$	T_x	e_x
0	0.0282	0.127	0.0275	100000	2753	97597	0.94624	5553340	55.5
1	0.0158	1.732	0.0610	97246.93	5936	375523	0.95568	5455743	56.1
5	0.0039	2.500	0.0193	91310.79	1762	452149	0.98034	5080220	55.6
10	0.0040	2.500	0.0200	89548.81	1794	443258	0.97677	4628071	51.7
15	0.0054	2.500	0.0265	87754.38	2325	432960	0.96528	4184813	47.7
20	0.0088	2.500	0.0432	85429.76	3688	417928	0.95549	3751853	43.9
25	0.0094	2.500	0.0459	81741.48	3753	399325	0.95058	3333925	40.8
30	0.0109	2.500	0.0531	77988.57	4141	379590	0.94803	2934600	37.6
35	0.0104	2.500	0.0508	73847.44	3749	359864	0.94084	2555010	34.6
40	0.0141	2.500	0.0680	70098.04	4766	338575	0.93045	2195146	31.3
45	0.0148	2.500	0.0712	65332.13	4653	315029	0.92195	1856571	28.4
50	0.0178	2.500	0.0854	60679.38	5182	290442	0.91538	1541542	25.4
55	0.0175	2.500	0.0838	55497.51	4650	265864	0.89304	1251100	22.5
60	0.0283	2.500	0.1323	50847.99	6725	237427	0.87141	985235.8	19.4
65	0.0265	2.500	0.1244	44122.66	5487	206896	0.83555	747809.2	16.9
70	0.0470	2.500	0.2102	38635.57	8122	172872	0.77661	540913.6	14.0
75	0.0546	2.500	0.2401	30513.43	7325	134254	0.73117	368041.1	12.1
80	0.0724	2.500	0.3067	23188.18	7111	98163	0.68383	233787.1	10.1
85	0.0790	2.500	0.3299	16076.95	5303	67127	0.62277	135624.3	8.4
90	0.1154	2.500	0.4479	10773.91	4826	41805	0.47427	68497.13	6.4
95	0.2000	2.500	0.6667	5947.97	3965	19827	0.25722	26692.43	4.5
100	0.2888	3.463	1.0000	1982.657	1983	6866		6865.866	3.5

Source: Projected from 2015 Sierra Leone population and housing census data



Appendix 19 Males Abridged Life Table, Kambia District 2015

Males Abridged Life Table, Kambia District 2015									
Age	nM_x	na_x	nq_x	l_x	nd_x	nL_x	${}_5P_x$	T_x	e_x
0	0.034561	0.139	0.0336	100000	3356	97110	0.938734	5300989	53.0
1	0.017155	1.758	0.0661	96643.78	6386	372257	0.953032	5203879	53.8
5	0.003547	2.500	0.0176	90257.72	1587	447322	0.981437	4831622	53.5
10	0.003951	2.500	0.0196	88670.96	1735	439018	0.976589	4384301	49.4
15	0.005543	2.500	0.0273	86936.29	2377	428740	0.967083	3945282	45.4
20	0.007883	2.500	0.0387	84559.75	3269	414627	0.95644	3516542	41.6
25	0.009975	2.500	0.0487	81291.1	3956	396566	0.949209	3101915	38.2
30	0.010895	2.500	0.0530	77335.33	4101	376424	0.944943	2705349	35.0
35	0.011776	2.500	0.0572	73234.32	4189	355699	0.936562	2328925	31.8
40	0.01452	2.500	0.0701	69045.43	4837	333134	0.927259	1973226	28.6
45	0.01572	2.500	0.0756	64208.35	4856	308902	0.910259	1640091	25.5
50	0.022166	2.500	0.1050	59352.44	6233	281181	0.897789	1331189	22.4
55	0.02085	2.500	0.0991	53119.85	5263	252441	0.868056	1050008	19.8
60	0.036781	2.500	0.1684	47856.53	8060	219133	0.845432	797567.5	16.7
65	0.029625	2.500	0.1379	39796.65	5488	185262	0.781622	578434.6	14.5
70	0.073853	2.500	0.3117	34308.17	10694	144805	0.69254	393172.5	11.5
75	0.070943	2.500	0.3013	23613.82	7114	100283	0.664595	248367.6	10.5
80	0.095125	2.500	0.3842	16499.46	6340	66648	0.620773	148084.4	9.0
85	0.091121	2.500	0.3711	10159.61	3770	41373	0.604328	81436.7	8.0
90	0.111111	2.500	0.4348	6389.631	2778	25003	0.450867	40063.59	6.3
95	0.240741	2.500	0.7514	3611.531	2714	11273	0.251496	15060.69	4.2
100	0.236994	4.220	1.0000	897.6637	898	3788		3787.703	4.2

Source: Projected from 2015 Sierra Leone population and housing census data



Appendix 20 Females Abridged Life Table, Kambia District 2015

Females Abridged Life Table, Kambia District 2015									
Age	nM_x	na_x	nq_x	l_x	nd_x	nL_x	${}_5P_x$	T_x	e_x
0	0.021992	0.115	0.0216	100000	2157	98090	0.953714	5825213	58.3
1	0.014455	1.698	0.0560	97842.78	5475	378767	0.958283	5727123	58.5
5	0.004267	2.500	0.0211	92367.58	1950	456964	0.979154	5348356	57.9
10	0.004158	2.500	0.0206	90417.9	1861	447438	0.97689	4891393	54.1
15	0.005206	2.500	0.0257	88557.3	2275	437098	0.963979	4443955	50.2
20	0.009547	2.500	0.0466	86281.87	4023	421353	0.954681	4006857	46.4
25	0.008988	2.500	0.0440	82259.34	3616	402258	0.951552	3585504	43.6
30	0.01092	2.500	0.0531	78643.72	4180	382769	0.950432	3183246	40.5
35	0.009372	2.500	0.0458	74463.98	3409	363796	0.944242	2800477	37.6
40	0.013695	2.500	0.0662	71054.49	4704	343512	0.933632	2436681	34.3
45	0.013766	2.500	0.0665	66350.11	4415	320713	0.93327	2093169	31.5
50	0.01385	2.500	0.0669	61935.24	4146	299312	0.931666	1772456	28.6
55	0.014472	2.500	0.0698	57789.64	4036	278859	0.914085	1473144	25.5
60	0.021764	2.500	0.1032	53753.91	5548	254901	0.892443	1194285	22.2
65	0.023821	2.500	0.1124	48206.33	5419	227484	0.884799	939384.1	19.5
70	0.025157	2.500	0.1183	42787.41	5064	201278	0.853471	711899.8	16.6
75	0.039198	2.500	0.1785	37723.81	6734	171785	0.788751	510621.7	13.5
80	0.057435	2.500	0.2511	30990.21	7782	135496	0.72897	338836.7	10.9
85	0.06993	2.500	0.2976	23208.01	6907	98772	0.635915	203341.1	8.8
90	0.119048	2.500	0.4587	16300.86	7477	62811	0.493753	104569	6.4
95	0.169014	2.500	0.5941	8823.404	5242	31013	0.257322	41758.29	4.7
100	0.333333	3.000	1.0000	3581.778	3582	10745		10745.33	3.0

Source: Projected from 2015 Sierra Leone population and housing census data



Appendix 21 Both Sexes Abridged Life Table, Koinadugu District 2015

Both Sexes Abridged Life Table, Koinadugu District 2015

Age	nM_x	na_x	nq_x	l_x	nd_x	nL_x	${}_5P_x$	T_x	e_x
0	0.0293	0.130	0.0286	100000	2862	97512	0.95764	6597391	66.0
1	0.0084	1.728	0.0328	97138.32	3190	381306	0.97611	6499879	66.9
5	0.0020	2.500	0.0101	93948.03	945	467378	0.98912	6118573	65.1
10	0.0024	2.500	0.0117	93003.17	1090	462291	0.98739	5651195	60.8
15	0.0027	2.500	0.0135	91913.13	1242	456462	0.98440	5188905	56.5
20	0.0036	2.500	0.0177	90671.5	1607	449340	0.97853	4732443	52.2
25	0.0051	2.500	0.0253	89064.59	2252	439692	0.97446	4283103	48.1
30	0.0052	2.500	0.0258	86812.18	2239	428463	0.97204	3843411	44.3
35	0.0061	2.500	0.0302	84573.16	2553	416482	0.96802	3414948	40.4
40	0.0069	2.500	0.0338	82019.68	2774	403164	0.96083	2998465	36.6
45	0.0091	2.500	0.0447	79245.73	3543	387371	0.94833	2595302	32.8
50	0.0121	2.500	0.0590	75702.52	4463	367355	0.94166	2207931	29.2
55	0.0119	2.500	0.0577	71239.48	4110	345922	0.92504	1840576	25.8
60	0.0196	2.500	0.0933	67129.51	6262	319993	0.91626	1494654	22.3
65	0.0152	2.500	0.0732	60867.62	4457	293196	0.87735	1174661	19.3
70	0.0386	2.500	0.1760	56410.7	9928	257235	0.79993	881465.2	15.6
75	0.0518	2.500	0.2293	46483.18	10659	205769	0.77852	624230.5	13.4
80	0.0473	2.500	0.2113	35824.29	7570	160196	0.74465	418461.8	11.7
85	0.0737	2.500	0.3112	28254.06	8792	119290	0.66355	258265.9	9.1
90	0.0917	2.500	0.3731	19462.13	7262	79156	0.57905	138975.5	7.1
95	0.1324	2.500	0.4972	12200.14	6066	45835	0.23379	59819.79	4.9
100	0.4386	2.280	1.0000	6133.773	6134	13985		13985	2.3

Source: Projected from 2015 Sierra Leone population and housing census data



Appendix 22 Males Abridged Life Table, Koinadugu District 2015

Males Abridged Life Table, Koinadugu District 2015

Age	nM_x	na_x	nq_x	l_x	nd_x	nL_x	${}_5P_x$	T_x	e_x
0	0.03416	0.138	0.0332	100000	3318	97139	0.952063	6512544	65.1
1	0.009227	1.759	0.0362	96681.76	3496	378892	0.97431	6415405	66.4
5	0.001833	2.500	0.0091	93185.58	850	463802	0.988655	6036513	64.8
10	0.002736	2.500	0.0136	92335.36	1254	458541	0.986801	5572711	60.4
15	0.002578	2.500	0.0128	91080.91	1167	452488	0.984447	5114170	56.1
20	0.003701	2.500	0.0183	89914.38	1648	445451	0.976874	4661682	51.8
25	0.005681	2.500	0.0280	88265.9	2472	435149	0.973245	4216231	47.8
30	0.005159	2.500	0.0255	85793.84	2185	423507	0.971181	3781082	44.1
35	0.006557	2.500	0.0323	83608.94	2697	411302	0.965636	3357575	40.2
40	0.007444	2.500	0.0365	80911.88	2957	397168	0.956307	2946273	36.4
45	0.010492	2.500	0.0511	77955.29	3985	379814	0.949629	2549105	32.7
50	0.010169	2.500	0.0496	73970.43	3668	360683	0.941006	2169290	29.3
55	0.01427	2.500	0.0689	70302.7	4843	339405	0.913389	1808608	25.7
60	0.022306	2.500	0.1056	65459.25	6915	310009	0.911675	1469203	22.4
65	0.014286	2.500	0.0690	58544.2	4038	282627	0.889997	1159194	19.8
70	0.033388	2.500	0.1541	54506.67	8398	251537	0.797959	876567	16.1
75	0.059437	2.500	0.2587	46108.32	11930	200717	0.777681	625029.5	13.6
80	0.037921	2.500	0.1732	34178.34	5919	156094	0.777541	424312.9	12.4
85	0.065672	2.500	0.2821	28259.06	7971	121369	0.689591	268219.3	9.5
90	0.084821	2.500	0.3499	20288.56	7099	83695	0.571742	146850.3	7.2
95	0.151261	2.500	0.5488	13189.43	7238	47852	0.242314	63155.32	4.8
100	0.388889	2.571	1.0000	5951.329	5951	15303		15303.42	2.6

Source: Projected from 2015 Sierra Leone population and housing census data



Appendix 23 Females Abridged Life Table, Koinadugu District 2015

Females Abridged Life Table, Koinadugu District 2015									
Age	nM_x	na_x	nq_x	l_x	nd_x	nL_x	${}_5P_x$	T_x	e_x
0	0.024808	0.123	0.0243	100000	2428	97870	0.963063	6683142	66.8
1	0.007489	1.693	0.0294	97572.08	2873	383661	0.977888	6585272	67.5
5	0.002217	2.500	0.0110	94698.75	1044	470884	0.989677	6201611	65.5
10	0.001932	2.500	0.0096	93654.8	900	466023	0.98807	5730727	61.2
15	0.002874	2.500	0.0143	92754.44	1324	460463	0.984305	5264704	56.8
20	0.003458	2.500	0.0171	91430.88	1567	453236	0.979864	4804240	52.5
25	0.004691	2.500	0.0232	89863.62	2083	444110	0.975412	4351004	48.4
30	0.005274	2.500	0.0260	87780.33	2285	433190	0.972701	3906894	44.5
35	0.005804	2.500	0.0286	85495.78	2446	421365	0.970018	3473704	40.6
40	0.00638	2.500	0.0314	83050.02	2608	408731	0.965575	3052339	36.8
45	0.007654	2.500	0.0376	80442.41	3021	394660	0.946485	2643608	32.9
50	0.01453	2.500	0.0701	77421.72	5427	373540	0.942699	2248948	29.0
55	0.008901	2.500	0.0435	71994.36	3134	352136	0.938994	1875408	26.0
60	0.016509	2.500	0.0793	68860.08	5459	330654	0.921008	1523272	22.1
65	0.016382	2.500	0.0787	63401.44	4989	304535	0.861183	1192618	18.8
70	0.045455	2.500	0.2041	58412.48	11921	262260	0.805668	888083.2	15.2
75	0.040064	2.500	0.1821	46491.56	8465	211295	0.785315	625823.1	13.5
80	0.058333	2.500	0.2545	38026.24	9679	165933	0.705967	414528.6	10.9
85	0.083969	2.500	0.3470	28346.83	9836	117143	0.633256	248595.9	8.8
90	0.099057	2.500	0.3970	18510.39	7348	74182	0.594888	131452.8	7.1
95	0.105882	2.500	0.4186	11162.22	4673	44130	0.229462	57271.28	5.1
100	0.493827	2.025	1.0000	6489.664	6490	13142		13141.57	2.0

Source: Projected from 2015 Sierra Leone population and housing census data



Appendix 24 Both Sexes Abridged Life Table, Port Loko District 2015

Both Sexes Abridged Life Table, Port Loko District 2015									
Age	nM_x	na_x	nq_x	l_x	nd_x	nL_x	${}_5P_x$	T_x	e_x
0	0.0650	0.228	0.0619	100000	6187	95223	0.88830	3902598	39.0
1	0.0321	1.653	0.1196	93813.42	11217	348926	0.91157	3807375	40.6
5	0.0080	2.500	0.0393	82596.67	3244	404874	0.96080	3458449	41.9
10	0.0080	2.500	0.0391	79352.84	3105	389002	0.95212	3053575	38.5
15	0.0117	2.500	0.0570	76247.94	4345	370376	0.93699	2664573	34.9
20	0.0144	2.500	0.0694	71902.56	4990	347038	0.91712	2294197	31.9
25	0.0205	2.500	0.0974	66912.6	6515	318275	0.89610	1947159	29.1
30	0.0235	2.500	0.1111	60397.59	6712	285207	0.89301	1628884	27.0
35	0.0216	2.500	0.1023	53685.32	5493	254694	0.88016	1343676	25.0
40	0.0300	2.500	0.1394	48192.22	6716	224171	0.86215	1088982	22.6
45	0.0292	2.500	0.1361	41476.32	5645	193269	0.84684	864811.1	20.9
50	0.0379	2.500	0.1729	35831.45	6196	163668	0.84302	671541.7	18.7
55	0.0296	2.500	0.1377	29635.84	4081	137976	0.81715	507873.5	17.1
60	0.0533	2.500	0.2352	25554.72	6010	112748	0.77950	369897.1	14.5
65	0.0448	2.500	0.2013	19544.44	3934	87887	0.74574	257149.2	13.2
70	0.0763	2.500	0.3206	15610.17	5004	65541	0.70163	169262.7	10.8
75	0.0613	2.500	0.2657	10606.19	2818	45986	0.65902	103721.8	9.8
80	0.1140	2.500	0.4435	7788.12	3454	30306	0.53814	57735.98	7.4
85	0.1315	2.500	0.4949	4334.11	2145	16309	0.47329	27430.4	6.3
90	0.1673	2.500	0.5898	2189.312	1291	7719	0.38543	11121.85	5.1
95	0.2038	2.500	0.6751	898.143	606	2975	0.12583	3403.21	3.8
100	0.6815	1.467	1.0000	291.8451	292	428		428.2401	1.5

Source: Projected from 2015 Sierra Leone population and housing census data



Appendix 25 Males Abridged Life Table, Port Loko District 2015

Males Abridged Life Table, Port Loko District 2015									
Age	nM_x	na_x	nq_x	l_x	nd_x	nL_x	${}_5P_x$	T_x	e_x
0	0.064755	0.220	0.0616	100000	6164	95190	0.886102	3759282	37.6
1	0.033956	1.673	0.1259	93835.94	11812	347861	0.90693	3664092	39.0
5	0.008266	2.500	0.0405	82024.05	3322	401816	0.959086	3316231	40.4
10	0.008445	2.500	0.0414	78702.45	3254	385376	0.952025	2914415	37.0
15	0.011286	2.500	0.0549	75448.03	4141	366888	0.938398	2529038	33.5
20	0.014231	2.500	0.0687	71307.16	4900	344287	0.9174	2162150	30.3
25	0.020502	2.500	0.0975	66407.57	6476	315849	0.893585	1817864	27.4
30	0.024691	2.500	0.1163	59931.96	6969	282238	0.884924	1502015	25.1
35	0.024114	2.500	0.1137	52963.13	6023	249759	0.86312	1219777	23.0
40	0.035497	2.500	0.1630	46940.44	7652	215572	0.847521	970018.2	20.7
45	0.030081	2.500	0.1399	39288.33	5496	182702	0.835693	754446.2	19.2
50	0.042649	2.500	0.1927	33792.41	6512	152683	0.820659	571744.4	16.9
55	0.035444	2.500	0.1628	27280.65	4441	125300	0.780481	419061.8	15.4
60	0.067091	2.500	0.2873	22839.5	6561	97795	0.730658	293761.4	12.9
65	0.055629	2.500	0.2442	16278.33	3975	71454	0.702507	195966.8	12.0
70	0.090204	2.500	0.3680	12303.42	4528	50197	0.669549	124512.4	10.1
75	0.062694	2.500	0.2710	7775.449	2107	33609	0.64759	74315.28	9.6
80	0.120863	2.500	0.4641	5668.328	2631	21765	0.525144	40705.83	7.2
85	0.131544	2.500	0.4949	3037.723	1504	11430	0.464526	18940.71	6.2
90	0.177914	2.500	0.6157	1534.203	945	5309	0.365545	7510.891	4.9
95	0.207547	2.500	0.6832	589.5771	403	1941	0.118375	2201.44	3.7
100	0.716667	1.395	1.0000	186.7605	187	261		260.596	1.4

Source: Projected from 2015 Sierra Leone population and housing census data



Appendix 26 Females Abridged Life Table, Port Loko District 2015

Females Abridged Life Table, Port Loko District 2015									
Age	nM_x	na_x	nq_x	l_x	nd_x	nL_x	${}_5P_x$	T_x	e_x
0	0.065191	0.236	0.0621	100000	6210	95257	0.890544	4052265	40.5
1	0.030338	1.632	0.1132	93790.04	10619	350015	0.916191	3957008	42.2
5	0.007748	2.500	0.0380	83171.35	3161	407954	0.96265	3606993	43.4
10	0.00747	2.500	0.0367	80010.36	2934	392717	0.952415	3199039	40.0
15	0.012141	2.500	0.0589	77076.58	4541	374030	0.935756	2806321	36.4
20	0.014487	2.500	0.0699	72535.37	5071	350001	0.916913	2432291	33.5
25	0.020446	2.500	0.0973	67464.85	6562	320920	0.897963	2082291	30.9
30	0.022683	2.500	0.1073	60903.23	6537	288175	0.899543	1761371	28.9
35	0.019454	2.500	0.0928	54366.61	5043	259225	0.895749	1473196	27.1
40	0.024835	2.500	0.1169	49323.57	5767	232201	0.876056	1213971	24.6
45	0.028243	2.500	0.1319	43556.84	5745	203421	0.858326	981769.5	22.5
50	0.033119	2.500	0.1529	37811.64	5783	174602	0.865053	778348.3	20.6
55	0.024114	2.500	0.1137	32029.04	3642	151040	0.84935	603746.6	18.8
60	0.042557	2.500	0.1923	28386.83	5459	128286	0.819588	452706.9	15.9
65	0.036126	2.500	0.1657	22927.42	3798	105141	0.782037	324421.3	14.1
70	0.06529	2.500	0.2806	19129.12	5368	82224	0.727739	219279.9	11.5
75	0.059931	2.500	0.2606	13760.66	3586	59838	0.667909	137055.5	10.0
80	0.109155	2.500	0.4288	10174.53	4363	39966	0.547228	77217.53	7.6
85	0.131488	2.500	0.4948	5812.006	2876	21871	0.48069	37251.19	6.4
90	0.158598	2.500	0.5678	2936.274	1667	10513	0.401911	15380.49	5.2
95	0.200637	2.500	0.6681	1268.934	848	4225	0.131932	4867.469	3.8
100	0.65587	1.525	1.0000	421.1837	421	642		642.1752	1.5

Source: Projected from 2015 Sierra Leone population and housing census data



Appendix 27 Both Sexes Abridged Life Table, Tonkolili District 2015

Both Sexes Abridged Life Table, Tonkolili District 2015

Age	nM_x	na_x	nq_x	l_x	nd_x	nL_x	${}_5P_x$	T_x	e_x
0	0.0398	0.159	0.0385	100000	3851	96763	0.93069	5098026	51.0
1	0.0189	1.707	0.0726	96148.98	6983	368583	0.94706	5001263	52.0
5	0.0046	2.500	0.0230	89165.91	2047	440712	0.97858	4632680	52.0
10	0.0040	2.500	0.0198	87118.78	1729	431272	0.97583	4191968	48.1
15	0.0058	2.500	0.0286	85390.12	2441	420848	0.96852	3760696	44.0
20	0.0070	2.500	0.0345	82949.08	2858	407600	0.95817	3339848	40.3
25	0.0101	2.500	0.0495	80090.89	3962	390550	0.94400	2932248	36.6
30	0.0130	2.500	0.0629	76129.26	4787	368678	0.93662	2541698	33.4
35	0.0132	2.500	0.0639	71342.04	4560	345310	0.92175	2173020	30.5
40	0.0196	2.500	0.0936	66782.11	6248	318290	0.90693	1827709	27.4
45	0.0194	2.500	0.0925	60534.09	5602	288666	0.89514	1509419	24.9
50	0.0252	2.500	0.1184	54932.19	6506	258395	0.88413	1220753	22.2
55	0.0239	2.500	0.1130	48425.77	5470	228455	0.85966	962358.2	19.9
60	0.0374	2.500	0.1712	42956.04	7355	196393	0.82561	733903.7	17.1
65	0.0391	2.500	0.1782	35601.16	6344	162145	0.78473	537510.7	15.1
70	0.0599	2.500	0.2604	29256.81	7618	127240	0.75454	375365.7	12.8
75	0.0508	2.500	0.2253	21639.16	4875	96008	0.71110	248125.8	11.5
80	0.0911	2.500	0.3710	16764.03	6220	68271	0.63523	152117.8	9.1
85	0.0863	2.500	0.3549	10544.52	3742	43368	0.58793	83846.44	8.0
90	0.1336	2.500	0.5008	6802.672	3406	25497	0.47698	40478.47	6.0
95	0.1585	2.500	0.5676	3396.175	1928	12162	0.18822	14981.36	4.4
100	0.5208	1.920	1.0000	1468.463	1468	2820		2819.761	1.9

Source: Projected from 2015 Sierra Leone population and housing census data



Appendix 28 Males Abridged Life Table, Tonkolili District 2015

Males Abridged Life Table, Tonkolili District 2015									
Age	nM_x	na_x	nq_x	l_x	nd_x	nL_x	${}_5P_x$	T_x	e_x
0	0.040782	0.156	0.0394	100000	3942	96672	0.929517	5000182	50.0
1	0.019408	1.740	0.0744	96057.55	7144	368087	0.945627	4903510	51.0
5	0.004624	2.500	0.0229	88913.73	2032	439488	0.978201	4535423	51.0
10	0.004187	2.500	0.0207	86881.51	1800	429908	0.976238	4095935	47.1
15	0.005447	2.500	0.0269	85081.59	2286	419692	0.970742	3666027	43.1
20	0.006444	2.500	0.0317	82795.38	2625	407413	0.961678	3246335	39.2
25	0.009239	2.500	0.0452	80169.93	3620	391800	0.943101	2838921	35.4
30	0.014337	2.500	0.0692	76550.25	5297	369507	0.929376	2447121	32.0
35	0.01497	2.500	0.0722	71252.75	5141	343411	0.916236	2077613	29.2
40	0.02023	2.500	0.0963	66111.78	6365	314646	0.900665	1734202	26.2
45	0.021655	2.500	0.1027	59746.56	6137	283391	0.886793	1419556	23.8
50	0.026644	2.500	0.1249	53609.67	6696	251309	0.878525	1136166	21.2
55	0.024981	2.500	0.1176	46913.86	5515	220781	0.846167	884856.7	18.9
60	0.043198	2.500	0.1949	41398.6	8070	186818	0.803723	664075.6	16.0
65	0.043937	2.500	0.1979	33328.49	6597	150150	0.76966	477257.9	14.3
70	0.062624	2.500	0.2707	26731.4	7237	115564	0.752146	327108.1	12.2
75	0.048551	2.500	0.2165	19494.28	4220	86921	0.690826	211543.9	10.9
80	0.108738	2.500	0.4275	15274.19	6529	60047	0.595622	124622.7	8.2
85	0.089005	2.500	0.3640	8744.768	3183	35766	0.547914	64575.3	7.4
90	0.167598	2.500	0.5906	5561.448	3284	19596	0.398607	28809.76	5.2
95	0.183036	2.500	0.6279	2277.128	1430	7811	0.152175	9213.318	4.0
100	0.604396	1.655	1.0000	847.3846	847	1402		1402.036	1.7

Source: Projected from 2015 Sierra Leone population and housing census data



Appendix 29 Females Abridged Life Table, Tonkolili District 2015

Females Abridged Life Table, Tonkolili District 2015									
Age	nM_x	na_x	nq_x	l_x	nd_x	nL_x	${}_5P_x$	T_x	e_x
0	0.038803	0.163	0.0376	100000	3758	96853	0.9319	5205123	52.1
1	0.018469	1.672	0.0708	96241.78	6817	369096	0.948531	5108270	53.1
5	0.004667	2.500	0.0231	89424.93	2063	441968	0.979019	4739173	53.0
10	0.003805	2.500	0.0188	87362.29	1646	432695	0.975466	4297205	49.2
15	0.00616	2.500	0.0303	85715.82	2600	422079	0.966528	3864510	45.1
20	0.00748	2.500	0.0367	83115.93	3051	407951	0.955374	3442431	41.4
25	0.010855	2.500	0.0528	80064.64	4231	389746	0.944845	3034479	37.9
30	0.011861	2.500	0.0576	75833.8	4368	368250	0.942914	2644733	34.9
35	0.011638	2.500	0.0565	71466.12	4041	347228	0.926803	2276483	31.9
40	0.019034	2.500	0.0908	67425	6125	321812	0.914148	1929255	28.6
45	0.016745	2.500	0.0804	61299.73	4926	294183	0.9049	1607444	26.2
50	0.023533	2.500	0.1111	56373.66	6265	266207	0.890456	1313260	23.3
55	0.02278	2.500	0.1078	50108.97	5400	237045	0.872157	1047053	20.9
60	0.032514	2.500	0.1504	44709.15	6722	206741	0.845632	810008.2	18.1
65	0.034569	2.500	0.1591	37987.09	6044	174827	0.798421	603267.6	15.9
70	0.057692	2.500	0.2521	31943.52	8053	139585	0.755461	428441	13.4
75	0.053111	2.500	0.2344	23890.54	5601	105451	0.726222	288855.9	12.1
80	0.077663	2.500	0.3252	18289.94	5947	76581	0.666513	183404.7	10.0
85	0.083618	2.500	0.3458	12342.45	4268	51042	0.63046	106823.7	8.7
90	0.101828	2.500	0.4058	8074.421	3277	32180	0.560783	55781.52	6.9
95	0.131707	2.500	0.4954	4797.601	2377	18046	0.235386	23601.46	4.9
100	0.435754	2.295	1.0000	2420.808	2421	5555		5555.443	2.3

Source: Projected from 2015 Sierra Leone population and housing census data



Appendix 30 Both Sexes Abridged Life Table, Bo District 2015

Both Sexes Abridged Life Table, Bo District 2015									
Age	nM_x	na_x	nq_x	l_x	nd_x	nL_x	${}_5P_x$	T_x	e_x
0	0.0683	0.237	0.0649	100000	6491	95046	0.89869	4943142	49.4
1	0.0237	1.646	0.0896	93508.81	8382	354301	0.93669	4848096	51.8
5	0.0045	2.500	0.0222	85126.63	1893	420900	0.98017	4493795	52.8
10	0.0035	2.500	0.0174	83233.51	1445	412556	0.98042	4072895	48.9
15	0.0044	2.500	0.0218	81788.74	1786	404478	0.97506	3660339	44.8
20	0.0057	2.500	0.0281	80002.28	2248	394392	0.96352	3255861	40.7
25	0.0092	2.500	0.0451	77754.43	3508	380003	0.95163	2861470	36.8
30	0.0106	2.500	0.0518	74246.64	3845	361621	0.94649	2481467	33.4
35	0.0114	2.500	0.0553	70401.78	3895	342270	0.93579	2119846	30.1
40	0.0153	2.500	0.0736	66506.31	4895	320293	0.91849	1777576	26.7
45	0.0189	2.500	0.0900	61611	5547	294187	0.90229	1457282	23.7
50	0.0224	2.500	0.1061	56063.62	5950	265442	0.88724	1163096	20.7
55	0.0256	2.500	0.1202	50113.37	6023	235510	0.84085	897653.4	17.9
60	0.0453	2.500	0.2034	44090.8	8970	198030	0.80901	662142.9	15.0
65	0.0384	2.500	0.1754	35121.04	6159	160208	0.77463	464113.3	13.2
70	0.0667	2.500	0.2860	28961.99	8283	124102	0.70031	303905.7	10.5
75	0.0759	2.500	0.3189	20678.62	6593	86909	0.60752	179804.2	8.7
80	0.1335	2.500	0.5006	14085.17	7050	52800	0.47827	92894.73	6.6
85	0.1572	2.500	0.5641	7034.674	3968	25252	0.41515	40095.12	5.7
90	0.1850	2.500	0.6324	3066.23	1939	10484	0.35803	14842.86	4.8
95	0.2006	2.500	0.6680	1127.196	753	3753	0.13898	4359.29	3.9
100	0.6176	1.619	1.0000	374.1755	374	606		605.8598	1.6

Source: Projected from 2015 Sierra Leone population and housing census data



Appendix 31 Males Abridged Life Table, Bo District 2015

Males Abridged Life Table, Bo District 2015

Age	nM_x	na_x	nq_x	l_x	nd_x	nL_x	${}_5P_x$	T_x	e_x
0	0.071025	0.236	0.0674	100000	6737	94854	0.893745	4811904	48.1
1	0.025491	1.656	0.0962	93262.98	8973	352018	0.931804	4717050	50.6
5	0.004852	2.500	0.0240	84289.59	2020	416398	0.979729	4365031	51.8
10	0.003324	2.500	0.0165	82269.42	1356	407957	0.980378	3948634	48.0
15	0.004615	2.500	0.0228	80913.28	1846	399952	0.975529	3540677	43.8
20	0.005303	2.500	0.0262	79067.42	2069	390165	0.967435	3140725	39.7
25	0.007983	2.500	0.0391	76998.44	3013	377459	0.953007	2750561	35.7
30	0.011347	2.500	0.0552	73985.12	4082	359721	0.944487	2373102	32.1
35	0.011496	2.500	0.0559	69903.31	3906	339752	0.934214	2013381	28.8
40	0.015861	2.500	0.0763	65997.39	5034	317401	0.916515	1673629	25.4
45	0.01913	2.500	0.0913	60962.97	5565	290903	0.896649	1356228	22.2
50	0.02477	2.500	0.1166	55398.05	6461	260838	0.87772	1065325	19.2
55	0.027505	2.500	0.1287	48937	6297	228942	0.823727	804487.8	16.4
60	0.052207	2.500	0.2309	42639.96	9846	188586	0.78008	575545.4	13.5
65	0.045843	2.500	0.2056	32794.44	6744	147112	0.733591	386959.4	11.8
70	0.082772	2.500	0.3429	26050.44	8933	107920	0.644279	239847.2	9.2
75	0.092376	2.500	0.3752	17117.64	6423	69531	0.546704	131927	7.7
80	0.162688	2.500	0.5783	10694.66	6184	38013	0.422324	62396.3	5.8
85	0.161919	2.500	0.5763	4510.443	2599	16054	0.37969	24383.56	5.4
90	0.227041	2.500	0.7242	1911.041	1384	6095	0.302579	8329.846	4.4
95	0.171617	2.500	0.6005	527.1302	317	1844	0.174574	2234.418	4.2
100	0.539924	1.852	1.0000	210.6086	211	390		390.0708	1.9

Source: Projected from 2015 Sierra Leone population and housing census data



Appendix 32 Females Abridged Life Table, Bo District 2015

Females Abridged Life Table, Bo District 2015									
Age	nM_x	na_x	nq_x	l_x	nd_x	nL_x	${}_5P_x$	T_x	e_x
0	0.065469	0.237	0.0624	100000	6235	95243	0.903719	5088029	50.9
1	0.021834	1.632	0.0830	93764.58	7786	356617	0.941613	4992786	53.2
5	0.00415	2.500	0.0205	85978.23	1766	425477	0.980604	4636169	53.9
10	0.00368	2.500	0.0182	84212.46	1535	417224	0.980441	4210693	50.0
15	0.004227	2.500	0.0209	82677.18	1729	409064	0.974726	3793469	45.9
20	0.006036	2.500	0.0297	80948.22	2407	398725	0.960298	3384405	41.8
25	0.010252	2.500	0.0500	78541.71	3926	382895	0.950495	2985680	38.0
30	0.010047	2.500	0.0490	74616.12	3656	363939	0.948145	2602786	34.9
35	0.01128	2.500	0.0549	70959.63	3892	345067	0.937426	2238846	31.6
40	0.014668	2.500	0.0707	67067.32	4745	323475	0.920724	1893779	28.2
45	0.01851	2.500	0.0885	62322.72	5513	297831	0.908861	1570304	25.2
50	0.019745	2.500	0.0941	56809.81	5345	270687	0.898393	1272472	22.4
55	0.023261	2.500	0.1099	51465.1	5657	243184	0.858071	1001785	19.5
60	0.039053	2.500	0.1779	45808.34	8149	208669	0.836105	758601.6	16.6
65	0.0317	2.500	0.1469	37659.19	5531	174469	0.810348	549932.8	14.6
70	0.054496	2.500	0.2398	32128.47	7705	141381	0.749586	375463.6	11.7
75	0.060926	2.500	0.2644	24423.8	6457	105977	0.657223	234082.9	9.6
80	0.115919	2.500	0.4494	17967	8074	69650	0.513164	128105.9	7.1
85	0.153587	2.500	0.5549	9893.196	5490	35742	0.442317	58455.43	5.9
90	0.157095	2.500	0.5640	4403.654	2484	15809	0.387736	22713.31	5.2
95	0.226471	2.500	0.7230	1920.089	1388	6130	0.112122	6903.95	3.6
100	0.687075	1.455	1.0000	531.8557	532	774		774.0871	1.5

Source: Projected from 2015 Sierra Leone population and housing census data



Appendix 33 Both Sexes Abridged Life Table, Bonthe District 2015

Both Sexes Abridged Life Table, Bonthe District 2015									
Age	nM_x	na_x	nq_x	l_x	nd_x	nL_x	${}_5P_x$	T_x	e_x
0	0.0638	0.225	0.0607	100000	6075	95290	0.90593	5441314	54.4
1	0.0215	1.655	0.0818	93925.06	7686	357677	0.94032	5346024	56.9
5	0.0049	2.500	0.0244	86239.32	2104	425936	0.97955	4988347	57.8
10	0.0033	2.500	0.0164	84134.89	1379	417226	0.98386	4562411	54.2
15	0.0032	2.500	0.0159	82755.54	1314	410493	0.98110	4145185	50.1
20	0.0044	2.500	0.0220	81441.56	1790	402733	0.97489	3734692	45.9
25	0.0057	2.500	0.0283	79651.73	2255	392621	0.96752	3331959	41.8
30	0.0075	2.500	0.0368	77396.6	2845	379870	0.96258	2939338	38.0
35	0.0078	2.500	0.0381	74551.26	2840	365656	0.95223	2559469	34.3
40	0.0119	2.500	0.0578	71711.33	4148	348188	0.94334	2193812	30.6
45	0.0114	2.500	0.0554	67563.8	3744	328459	0.93097	1845624	27.3
50	0.0174	2.500	0.0835	63819.81	5326	305784	0.91976	1517165	23.8
55	0.0160	2.500	0.0767	58493.77	4488	281249	0.89080	1211381	20.7
60	0.0311	2.500	0.1444	54005.76	7796	250538	0.86117	930132.5	17.2
65	0.0283	2.500	0.1324	46209.38	6117	215756	0.81251	679594.7	14.7
70	0.0574	2.500	0.2510	40092.85	10064	175304	0.72293	463839.1	11.6
75	0.0739	2.500	0.3119	30028.78	9364	126733	0.64559	288535	9.6
80	0.1051	2.500	0.4163	20664.29	8602	81818	0.56344	161802.4	7.8
85	0.1233	2.500	0.4714	12062.77	5686	46099	0.47959	79984.69	6.6
90	0.1769	2.500	0.6132	6376.912	3910	22109	0.41056	33885.48	5.3
95	0.1435	2.500	0.5280	2466.541	1302	9077	0.22926	11776.84	4.8
100	0.4312	2.319	1.0000	1164.208	1164	2700		2699.971	2.3

Source: Projected from 2015 Sierra Leone population and housing census data



Appendix 34 Males Abridged Life Table, Bonthe District 2015

Males Abridged Life Table, Bonthe District 2015									
Age	nM_x	na_x	nq_x	l_x	nd_x	nL_x	${}_5P_x$	T_x	e_x
0	0.070502	0.235	0.0669	100000	6689	94881	0.899321	5311178	53.1
1	0.022217	1.657	0.0845	93310.69	7882	354779	0.938613	5216296	55.9
5	0.004821	2.500	0.0238	85428.74	2035	422057	0.978731	4861517	56.9
10	0.003767	2.500	0.0187	83394.09	1556	413081	0.98295	4439460	53.2
15	0.003106	2.500	0.0154	81838.11	1261	406037	0.980194	4026380	49.2
20	0.004913	2.500	0.0243	80576.8	1955	397995	0.971929	3620342	44.9
25	0.006497	2.500	0.0320	78621.31	2513	386823	0.964871	3222347	41.0
30	0.007829	2.500	0.0384	76107.98	2922	373235	0.96459	2835524	37.3
35	0.006568	2.500	0.0323	73185.86	2364	360018	0.951965	2462289	33.6
40	0.013284	2.500	0.0643	70821.44	4553	342725	0.939456	2102271	29.7
45	0.011638	2.500	0.0565	66268.52	3747	321975	0.931926	1759546	26.6
50	0.016731	2.500	0.0803	62521.44	5020	300057	0.921141	1437571	23.0
55	0.016081	2.500	0.0773	57501.32	4445	276395	0.887976	1137514	19.8
60	0.032353	2.500	0.1497	53056.61	7940	245432	0.854036	861119.5	16.2
65	0.030482	2.500	0.1416	45116.17	6389	209608	0.793089	615687.6	13.6
70	0.065923	2.500	0.2830	38726.94	10959	166238	0.689258	406079.8	10.5
75	0.084691	2.500	0.3495	27768.08	9704	114581	0.593387	239842.3	8.6
80	0.131373	2.500	0.4945	18064.18	8932	67991	0.499498	125261.6	6.9
85	0.137795	2.500	0.5124	9132.076	4680	33961	0.45347	57271.01	6.3
90	0.178218	2.500	0.6164	4452.388	2745	15400	0.399483	23309.85	5.2
95	0.155172	2.500	0.5590	1707.765	955	6152	0.222173	7909.464	4.6
100	0.428571	2.333	1.0000	753.1139	753	1757		1757.266	2.3

Source: Projected from 2015 Sierra Leone population and housing census data



Appendix 35 Females Abridged Life Table, Bonthe District 2015

Females Abridged Life Table, Bonthe District 2015									
Age	nM_x	na_x	nq_x	l_x	nd_x	nL_x	${}_5P_x$	T_x	e_x
0	0.057057	0.214	0.0546	100000	5461	95707	0.912459	5576169	55.8
1	0.020762	1.644	0.0792	94539.25	7485	360523	0.942124	5480462	58.0
5	0.005067	2.500	0.0250	87053.92	2178	429825	0.980474	5119939	58.8
10	0.002798	2.500	0.0139	84876.1	1179	421432	0.984895	4690114	55.3
15	0.003294	2.500	0.0163	83696.9	1367	415067	0.981786	4268682	51.0
20	0.004066	2.500	0.0201	82329.75	1657	407507	0.977232	3853615	46.8
25	0.005159	2.500	0.0255	80672.87	2054	398228	0.969653	3446108	42.7
30	0.007199	2.500	0.0354	78618.5	2780	386143	0.960818	3047880	38.8
35	0.00882	2.500	0.0431	75838.79	3272	371014	0.953042	2661737	35.1
40	0.010455	2.500	0.0509	72566.62	3697	353591	0.947534	2290723	31.6
45	0.011115	2.500	0.0541	68869.94	3724	335040	0.929825	1937132	28.1
50	0.018235	2.500	0.0872	65146.02	5681	311529	0.918144	1602092	24.6
55	0.015801	2.500	0.0760	59465.44	4520	286028	0.893496	1290563	21.7
60	0.029995	2.500	0.1395	54945.8	7666	255565	0.867548	1004535	18.3
65	0.026496	2.500	0.1242	47280.22	5874	221715	0.831063	748970.1	15.8
70	0.04943	2.500	0.2200	41405.72	9108	184259	0.757312	527255.3	12.7
75	0.062914	2.500	0.2718	32297.87	8779	139542	0.694422	342996.3	10.6
80	0.08542	2.500	0.3519	23518.76	8277	96901	0.616957	203454.7	8.7
85	0.10989	2.500	0.4310	15241.53	6570	59784	0.503897	106554	7.0
90	0.175732	2.500	0.6105	8671.903	5294	30125	0.42189	46770.41	5.4
95	0.131579	2.500	0.4950	3378.009	1672	12709	0.236476	16645.63	4.9
100	0.433333	2.308	1.0000	1705.727	1706	3936		3936.294	2.3

Source: Projected from 2015 Sierra Leone population and housing census data



Appendix 36 Both Sexes Abridged Life Table, Moyamba District 2015

Both Sexes Abridged Life Table, Moyamba District 2015									
Age	nM_x	na_x	nq_x	l_x	nd_x	nL_x	${}_5P_x$	T_x	e_x
0	0.0764	0.259	0.0723	100000	7228	94641	0.87731	4431501	44.3
1	0.0332	1.628	0.1230	92771.97	11415	344016	0.91334	4336860	46.7
5	0.0061	2.500	0.0302	81357.46	2457	400644	0.97330	3992844	49.1
10	0.0047	2.500	0.0231	78900.01	1822	389945	0.96816	3592200	45.5
15	0.0083	2.500	0.0408	77078.14	3144	377531	0.95478	3202255	41.5
20	0.0102	2.500	0.0498	73934.19	3685	360458	0.94632	2824724	38.2
25	0.0119	2.500	0.0577	70248.9	4055	341107	0.93380	2464266	35.1
30	0.0156	2.500	0.0752	66193.92	4977	318527	0.92792	2123159	32.1
35	0.0142	2.500	0.0687	61216.94	4206	295569	0.91910	1804632	29.5
40	0.0197	2.500	0.0940	57010.71	5358	271658	0.90923	1509063	26.5
45	0.0182	2.500	0.0872	51652.45	4505	247000	0.89163	1237405	24.0
50	0.0282	2.500	0.1315	47147.4	6202	220232	0.88118	990405.7	21.0
55	0.0220	2.500	0.1042	40945.59	4265	194064	0.85510	770173.2	18.8
60	0.0421	2.500	0.1904	36680.1	6982	165944	0.81625	576109	15.7
65	0.0385	2.500	0.1756	29697.62	5214	135452	0.77658	410164.6	13.8
70	0.0655	2.500	0.2814	24483.18	6891	105189	0.72927	274712.6	11.2
75	0.0587	2.500	0.2558	17592.6	4501	76711	0.64902	169523.2	9.6
80	0.1259	2.500	0.4788	13091.9	6269	49787	0.50549	92811.95	7.1
85	0.1422	2.500	0.5246	6823.052	3579	25167	0.45768	43024.57	6.3
90	0.1632	2.500	0.5796	3243.82	1880	11519	0.39973	17857.39	5.5
95	0.1923	2.500	0.6494	1363.59	885	4604	0.27364	6338.866	4.6
100	0.2757	3.628	1.0000	478.142	478	1735		1734.536	3.6

Source: Projected from 2015 Sierra Leone population and housing census data



Appendix 37 Males Abridged Life Table, Moyamba District 2015

Males Abridged Life Table, Moyamba District 2015									
Age	nM_x	na_x	nq_x	l_x	nd_x	nL_x	${}_5P_x$	T_x	e_x
0	0.078654	0.256	0.0743	100000	7431	94473	0.873468	4285208	42.9
1	0.034613	1.635	0.1280	92569.36	11847	342261	0.910515	4190735	45.3
5	0.005996	2.500	0.0295	80722.69	2384	397653	0.973655	3848474	47.7
10	0.004665	2.500	0.0231	78338.47	1806	387177	0.970112	3450821	44.1
15	0.007515	2.500	0.0369	76532.3	2823	375605	0.954732	3063644	40.0
20	0.011094	2.500	0.0540	73709.63	3978	358602	0.942897	2688039	36.5
25	0.012458	2.500	0.0604	69731.13	4212	338125	0.929253	2329437	33.4
30	0.017047	2.500	0.0818	65518.78	5356	314203	0.918898	1991313	30.4
35	0.016753	2.500	0.0804	60162.58	4837	288721	0.91068	1677109	27.9
40	0.020836	2.500	0.0990	55325.76	5479	262932	0.903988	1388388	25.1
45	0.019434	2.500	0.0927	49847.19	4619	237688	0.885576	1125456	22.6
50	0.029738	2.500	0.1384	45227.88	6260	210490	0.872997	887768.2	19.6
55	0.024127	2.500	0.1138	38968.27	4434	183758	0.838388	677277.8	17.4
60	0.048328	2.500	0.2156	34534.76	7445	154060	0.781893	493520.2	14.3
65	0.049769	2.500	0.2213	27089.27	5995	120459	0.738155	339460.2	12.5
70	0.074468	2.500	0.3139	21094.15	6621	88917	0.706637	219001.6	10.4
75	0.060678	2.500	0.2634	14472.67	3813	62832	0.624067	130084.6	9.0
80	0.143727	2.500	0.5287	10660.16	5636	39211	0.451661	67252.48	6.3
85	0.167401	2.500	0.5901	5024.414	2965	17710	0.404162	28041.04	5.6
90	0.17551	2.500	0.6099	2059.698	1256	7158	0.380184	10330.76	5.0
95	0.190476	2.500	0.6452	803.4282	518	2721	0.142346	3172.944	3.9
100	0.631206	1.584	1.0000	285.0874	285	452		451.6553	1.6

Source: Projected from 2015 Sierra Leone population and housing census data



Appendix 38 Females Abridged Life Table, Moyamba District 2015

Females Abridged Life Table, Moyamba District 2015									
Age	nM_x	na_x	nq_x	l_x	nd_x	nL_x	${}_5P_x$	T_x	e_x
0	0.074089	0.261	0.0702	100000	7024	94807	0.881154	4566957	45.7
1	0.03174	1.619	0.1180	92975.87	10975	345770	0.916222	4472150	48.1
5	0.006282	2.500	0.0309	82001.21	2536	403666	0.972911	4126380	50.3
10	0.00468	2.500	0.0231	79465.33	1838	392731	0.966307	3722714	46.8
15	0.009104	2.500	0.0445	77627.2	3455	379499	0.954368	3329982	42.9
20	0.009587	2.500	0.0468	74172.42	3472	362182	0.94884	2950483	39.8
25	0.011464	2.500	0.0557	70700.35	3940	343653	0.937229	2588301	36.6
30	0.014558	2.500	0.0702	66760.77	4689	322081	0.935124	2244648	33.6
35	0.012182	2.500	0.0591	62071.8	3669	301186	0.926233	1922567	31.0
40	0.018704	2.500	0.0893	58402.65	5218	278968	0.914555	1621381	27.8
45	0.01692	2.500	0.0812	53184.75	4317	255132	0.897948	1342412	25.2
50	0.026618	2.500	0.1248	48868.02	6098	229095	0.889459	1087280	22.2
55	0.019786	2.500	0.0943	42770.07	4032	203771	0.869354	858185.2	20.1
60	0.037352	2.500	0.1708	38738.28	6617	177149	0.844356	654414.3	16.9
65	0.029496	2.500	0.1374	32121.34	4412	149577	0.807729	477265.3	14.9
70	0.058698	2.500	0.2559	27709.41	7092	120818	0.747023	327688.4	11.8
75	0.056882	2.500	0.2490	20617.61	5134	90254	0.665933	206870.9	10.0
80	0.115244	2.500	0.4473	15483.8	6927	60103	0.542392	116617.3	7.5
85	0.125	2.500	0.4762	8557.3	4075	32599	0.494318	56514.57	6.6
90	0.156322	2.500	0.5620	4482.395	2519	16114	0.410457	23915.34	5.3
95	0.193676	2.500	0.6525	1963.363	1281	6614	0.15212	7800.939	4.0
100	0.575	1.739	1.0000	682.3406	682	1187		1186.679	1.7

Source: Projected from 2015 Sierra Leone population and housing census data



Appendix 39 Both Sexes Abridged Life Table, Pujehun District 2015

Both Sexes Abridged Life Table, Pujehun District 2015

Age	nM_x	na_x	nq_x	l_x	nd_x	nL_x	${}_5P_x$	T_x	e_x
0	0.0653	0.229	0.0622	100000	6217	95206	0.90747	4938867	49.4
1	0.0197	1.652	0.0754	93783.44	7071	358529	0.94433	4843660	51.6
5	0.0048	2.500	0.0235	86712.8	2036	428475	0.97695	4485131	51.7
10	0.0046	2.500	0.0226	84677.05	1915	418598	0.97786	4056656	47.9
15	0.0044	2.500	0.0217	82761.97	1792	409330	0.97344	3638059	44.0
20	0.0064	2.500	0.0316	80969.88	2557	398457	0.96227	3228729	39.9
25	0.0090	2.500	0.0441	78412.92	3457	383423	0.95243	2830272	36.1
30	0.0105	2.500	0.0512	74956.3	3839	365185	0.94737	2446849	32.6
35	0.0111	2.500	0.0541	71117.54	3849	345965	0.92554	2081664	29.3
40	0.0202	2.500	0.0960	67268.53	6455	320206	0.91923	1735699	25.8
45	0.0132	2.500	0.0640	60813.97	3891	294342	0.90171	1415493	23.3
50	0.0289	2.500	0.1349	56922.9	7681	265411	0.87259	1121151	19.7
55	0.0252	2.500	0.1187	49241.56	5845	231594	0.83986	855739.7	17.4
60	0.0462	2.500	0.2072	43396.22	8990	194506	0.81155	624145.2	14.4
65	0.0359	2.500	0.1649	34406.14	5672	157851	0.76031	429639.3	12.5
70	0.0788	2.500	0.3293	28734.24	9462	120015	0.65873	271788.4	9.5
75	0.0875	2.500	0.3591	19271.81	6921	79057	0.56039	151773.3	7.9
80	0.1576	2.500	0.5652	12350.99	6981	44303	0.44110	72716.25	5.9
85	0.1496	2.500	0.5444	5370.129	2923	19542	0.37800	28413.44	5.3
90	0.2625	2.500	0.7924	2446.714	1939	7387	0.19152	8871.334	3.6
95	0.3182	2.500	0.8861	508.0222	450	1415	0.04698	1484.493	2.9
100	0.8298	1.205	1.0000	57.87594	58	70		69.74793	1.2

Source: Projected from 2015 Sierra Leone population and housing census data



Appendix 40 Males Abridged Life Table, Pujehun District 2015

Males Abridged Life Table, Pujehun District 2015									
Age	nM_x	na_x	nq_x	l_x	nd_x	nL_x	${}_5P_x$	T_x	e_x
0	0.063947	0.218	0.0609	100000	6090	95235	0.907463	4932581	49.3
1	0.020573	1.676	0.0785	93910.02	7375	358496	0.942639	4837346	51.5
5	0.004647	2.500	0.0230	86534.75	1988	427705	0.977281	4478850	51.8
10	0.004544	2.500	0.0225	84547.19	1899	417988	0.978083	4051145	47.9
15	0.004318	2.500	0.0214	82647.98	1765	408827	0.975612	3633157	44.0
20	0.005573	2.500	0.0275	80882.74	2223	398856	0.961934	3224330	39.9
25	0.010035	2.500	0.0489	78659.86	3850	383674	0.947345	2825474	35.9
30	0.01164	2.500	0.0566	74809.61	4231	363471	0.944836	2441800	32.6
35	0.011034	2.500	0.0537	70578.86	3789	343421	0.929802	2078329	29.4
40	0.018331	2.500	0.0876	66789.39	5853	319313	0.928713	1734908	26.0
45	0.010965	2.500	0.0534	60935.93	3252	296551	0.913566	1415595	23.2
50	0.025842	2.500	0.1214	57684.28	7001	270919	0.873375	1119045	19.4
55	0.028404	2.500	0.1326	50683.15	6721	236614	0.826977	848126	16.7
60	0.049342	2.500	0.2196	43962.3	9655	195674	0.806158	611512.4	13.9
65	0.034974	2.500	0.1608	34307.33	5517	157744	0.758193	415838.3	12.1
70	0.081442	2.500	0.3383	28790.37	9741	119601	0.639053	258094.1	9.0
75	0.098485	2.500	0.3951	19049.87	7527	76431	0.52254	138493.5	7.3
80	0.177019	2.500	0.6136	11522.56	7070	39938	0.392526	62062.42	5.4
85	0.168067	2.500	0.5917	4452.745	2635	15677	0.348314	22124.15	5.0
90	0.265873	2.500	0.7986	1817.985	1452	5460	0.176126	6447.329	3.5
95	0.361538	2.500	0.9495	366.1971	348	962	0.025479	986.8745	2.7
100	0.735537	1.360	1.0000	18.49481	18	25		25.14462	1.4

Source: Projected from 2015 Sierra Leone population and housing census data



Appendix 41 Females Abridged Life Table, Pujehun District 2015

Females Abridged Life Table, Pujehun District 2015									
Age	nM_x	na_x	nq_x	l_x	nd_x	nL_x	${}_5P_x$	T_x	e_x
0	0.066629	0.240	0.0634	100000	6342	95182	0.907511	4939426	49.4
1	0.018896	1.630	0.0723	93658.17	6775	358574	0.945892	4844244	51.7
5	0.004855	2.500	0.0240	86882.69	2084	429203	0.976607	4485671	51.6
10	0.004609	2.500	0.0228	84798.7	1932	419163	0.97763	4056467	47.8
15	0.004438	2.500	0.0219	82866.61	1819	409787	0.971666	3637304	43.9
20	0.007097	2.500	0.0349	81048.08	2826	398176	0.962421	3227517	39.8
25	0.008245	2.500	0.0404	78222.26	3159	383213	0.956295	2829341	36.2
30	0.009659	2.500	0.0472	75062.79	3540	366464	0.949274	2446129	32.6
35	0.011199	2.500	0.0545	71522.99	3896	347875	0.921356	2079664	29.1
40	0.021988	2.500	0.1042	67627.05	7047	320517	0.908595	1731789	25.6
45	0.016041	2.500	0.0771	60579.67	4671	291220	0.887921	1411272	23.3
50	0.032425	2.500	0.1500	55908.34	8385	258580	0.872642	1120052	20.0
55	0.02122	2.500	0.1008	47523.77	4788	225648	0.854299	861472.2	18.1
60	0.043381	2.500	0.1957	42735.48	8363	192771	0.816301	635824	14.9
65	0.036872	2.500	0.1688	34372.94	5802	157359	0.762351	443053	12.9
70	0.076326	2.500	0.3205	28570.75	9156	119963	0.680334	285693.8	10.0
75	0.075758	2.500	0.3185	19414.46	6183	81615	0.597863	165730.7	8.5
80	0.142336	2.500	0.5249	13231.51	6945	48795	0.483906	84115.84	6.4
85	0.132468	2.500	0.4976	6286.302	3128	23612	0.405808	35321.31	5.6
90	0.259259	2.500	0.7865	3158.483	2484	9582	0.20816	11709.35	3.7
95	0.276119	2.500	0.8168	674.283	551	1995	0.062455	2127.436	3.2
100	0.929825	1.075	1.0000	123.5441	124	133		132.8682	1.1

Source: Projected from 2015 Sierra Leone population and housing census data



Appendix 42 Both Sexes Abridged Life Table, Western Area Rural District 2015

Both Sexes Abridged Life Table, Western Area Rural District 2015									
Age	nM_x	na_x	nq_x	l_x	nd_x	nL_x	${}_5P_x$	T_x	e_x
0	0.0634	0.224	0.0604	100000	6040	95311	0.90100	4488984	44.9
1	0.0248	1.656	0.0938	93959.9	8810	355188	0.93106	4393673	46.8
5	0.0060	2.500	0.0296	85149.97	2523	419442	0.97269	4038485	47.4
10	0.0050	2.500	0.0249	82626.84	2059	407988	0.96903	3619043	43.8
15	0.0076	2.500	0.0372	80568.24	2995	395354	0.95938	3211055	39.9
20	0.0090	2.500	0.0442	77573.3	3429	379295	0.95045	2815702	36.3
25	0.0113	2.500	0.0551	74144.53	4088	360502	0.93589	2436407	32.9
30	0.0153	2.500	0.0736	70056.27	5157	337390	0.92143	2075905	29.6
35	0.0175	2.500	0.0839	64899.59	5447	310881	0.90609	1738515	26.8
40	0.0221	2.500	0.1048	59452.8	6231	281686	0.89074	1427634	24.0
45	0.0242	2.500	0.1142	53221.62	6079	250910	0.86863	1145948	21.5
50	0.0326	2.500	0.1507	47142.51	7106	217948	0.85261	895038	19.0
55	0.0309	2.500	0.1435	40036.75	5744	185824	0.82304	677089.8	16.9
60	0.0484	2.500	0.2161	34292.75	7410	152940	0.78129	491266.1	14.3
65	0.0500	2.500	0.2221	26883.09	5970	119490	0.73211	338326.5	12.6
70	0.0781	2.500	0.3268	20913.01	6834	87480	0.68240	218836.2	10.5
75	0.0717	2.500	0.3040	14079.06	4280	59696	0.62258	131356	9.3
80	0.1273	2.500	0.4829	9799.429	4732	37166	0.53031	71659.78	7.3
85	0.1142	2.500	0.4441	5066.929	2250	19709	0.52788	34493.89	6.8
90	0.1415	2.500	0.5226	2816.86	1472	10404	0.38676	14784.42	5.2
95	0.2684	2.500	0.8031	1344.866	1080	4024	0.08130	4380.1	3.3
100	0.7435	1.345	1.0000	264.7375	265	356		356.0906	1.3

Source: Projected from 2015 Sierra Leone population and housing census data



Appendix 43 Males Abridged Life Table, Western Area Rural District 2015

Males Abridged Life Table, Western Area Rural District 2015

Age	nM_x	na_x	nq_x	l_x	nd_x	nL_x	${}_5P_x$	T_x	e_x
0	0.070734	0.235	0.0671	100000	6710	94869	0.892017	4361184	43.6
1	0.026761	1.657	0.1007	93289.51	9397	351139	0.924006	4266314	45.7
5	0.007132	2.500	0.0350	83892.58	2939	412115	0.967664	3915175	46.7
10	0.005996	2.500	0.0295	80953.28	2391	398788	0.968459	3503060	43.3
15	0.006836	2.500	0.0336	78562.11	2640	386210	0.962976	3104272	39.5
20	0.00828	2.500	0.0406	75921.97	3079	371911	0.953851	2718062	35.8
25	0.010672	2.500	0.0520	72842.48	3786	354748	0.940002	2346151	32.2
30	0.014178	2.500	0.0685	69056.62	4728	333464	0.925001	1991403	28.8
35	0.017104	2.500	0.0820	64328.82	5276	308454	0.904902	1657939	25.8
40	0.023135	2.500	0.1093	59052.9	6457	279121	0.892935	1349485	22.9
45	0.022052	2.500	0.1045	52595.47	5496	249237	0.870377	1070364	20.4
50	0.034235	2.500	0.1577	47099.25	7426	216930	0.837793	821127.4	17.4
55	0.036582	2.500	0.1676	39672.76	6649	181743	0.794595	604197.4	15.2
60	0.057363	2.500	0.2508	33024.24	8284	144412	0.756342	422454.9	12.8
65	0.053019	2.500	0.2341	24740.4	5791	109225	0.702468	278043.2	11.2
70	0.093946	2.500	0.3804	18949.41	7208	76727	0.62463	168818.7	8.9
75	0.089977	2.500	0.3673	11741.27	4312	47926	0.548153	92092.01	7.8
80	0.165577	2.500	0.5855	7429.039	4350	26271	0.434644	44166.25	5.9
85	0.139344	2.500	0.5167	3079.217	1591	11418	0.449267	17895.61	5.8
90	0.18018	2.500	0.6211	1488.132	924	5130	0.267071	6477.235	4.4
95	0.423077	2.500	1.0280	563.8264	580	1370	-0.01685	1347.339	2.4
100	0.696203	1.436	1.0000	-15.8082	-16	-23		-22.7063	1.4

Source: Projected from 2015 Sierra Leone population and housing census data



Appendix 44 Females Abridged Life Table, Western Area Rural District 2015

Females Abridged Life Table, Western Area Rural District 2015									
Age	nM_x	na_x	nq_x	l_x	nd_x	nL_x	${}_5P_x$	T_x	e_x
0	0.056009	0.211	0.0536	100000	5364	95767	0.909981	4630712	46.3
1	0.022847	1.646	0.0867	94636.18	8207	359223	0.938143	4534944	47.9
5	0.004966	2.500	0.0245	86429.14	2120	426846	0.97741	4175721	48.3
10	0.004164	2.500	0.0206	84309.36	1737	417204	0.969587	3748875	44.5
15	0.008252	2.500	0.0404	82572.19	3338	404515	0.956142	3331671	40.3
20	0.009717	2.500	0.0474	79233.97	3758	386774	0.947295	2927156	36.9
25	0.011997	2.500	0.0582	75475.63	4396	366389	0.931717	2540382	33.7
30	0.016438	2.500	0.0789	71079.94	5612	341371	0.917673	2173993	30.6
35	0.017972	2.500	0.0860	65468.36	5630	313267	0.907847	1832622	28.0
40	0.020807	2.500	0.0989	59838.35	5917	284398	0.887585	1519355	25.4
45	0.027219	2.500	0.1274	53920.96	6871	252428	0.865602	1234957	22.9
50	0.030661	2.500	0.1424	47050.06	6699	218502	0.870804	982529.6	20.9
55	0.024136	2.500	0.1138	40350.62	4592	190272	0.85466	764027.9	18.9
60	0.039782	2.500	0.1809	35758.27	6469	162618	0.806109	573755.7	16.0
65	0.046859	2.500	0.2097	29288.93	6143	131088	0.760554	411137.7	14.0
70	0.06432	2.500	0.2771	23146.23	6413	99699	0.735902	280049.8	12.1
75	0.056147	2.500	0.2462	16733.53	4119	73369	0.683712	180350.4	10.8
80	0.102921	2.500	0.4093	12614.07	5163	50163	0.593629	106981.4	8.5
85	0.100446	2.500	0.4014	7451.23	2991	29778	0.576065	56818.16	7.6
90	0.12	2.500	0.4615	4460.103	2059	17154	0.499363	27039.83	6.1
95	0.160714	2.500	0.5732	2401.594	1377	8566	0.133466	9885.586	4.1
100	0.776786	1.287	1.0000	1024.884	1025	1319		1319.391	1.3

Source: Projected from 2015 Sierra Leone population and housing census data



Appendix 45 Both Sexes Abridged Life Table, Western Area Urban District 2015

Both Sexes Abridged Life Table, Western Area Urban District 2015

Age	nM_x	na_x	nq_x	l_x	nd_x	nL_x	5^P_x	T_x	e_x
0	0.0259	0.121	0.0253	100000	2528	97777	0.95965	6318788	63.2
1	0.0091	1.737	0.0355	97472.33	3465	382049	0.97272	6221012	63.8
5	0.0028	2.500	0.0140	94007.21	1321	466735	0.98781	5838963	62.1
10	0.0021	2.500	0.0103	92686.63	955	461046	0.98852	5372228	58.0
15	0.0026	2.500	0.0127	91731.9	1162	455754	0.98551	4911182	53.5
20	0.0033	2.500	0.0163	90569.61	1480	449148	0.98032	4455428	49.2
25	0.0047	2.500	0.0231	89089.72	2055	440311	0.97158	4006280	45.0
30	0.0069	2.500	0.0339	87034.7	2950	427799	0.96309	3565969	41.0
35	0.0082	2.500	0.0400	84084.81	3367	412007	0.95620	3138170	37.3
40	0.0098	2.500	0.0477	80717.93	3852	393959	0.94983	2726163	33.8
45	0.0108	2.500	0.0527	76865.84	4054	374194	0.93815	2332204	30.3
50	0.0148	2.500	0.0715	72811.85	5204	351050	0.92779	1958009	26.9
55	0.0152	2.500	0.0730	67607.96	4936	325699	0.90662	1606960	23.8
60	0.0245	2.500	0.1154	62671.79	7230	295285	0.87564	1281260	20.4
65	0.0288	2.500	0.1345	55442.11	7459	258563	0.84844	985975.7	17.8
70	0.0375	2.500	0.1712	47983.08	8216	219375	0.82000	727412.7	15.2
75	0.0421	2.500	0.1906	39767	7579	179888	0.77075	508037.5	12.8
80	0.0643	2.500	0.2770	32188.01	8916	138649	0.68187	328150	10.2
85	0.0923	2.500	0.3750	23271.66	8727	94541	0.60706	189500.8	8.1
90	0.1069	2.500	0.4217	14544.79	6133	57392	0.52479	94959.68	6.5
95	0.1586	2.500	0.5678	8411.9	4776	30118	0.19830	37567.96	4.5
100	0.4880	2.049	1.0000	3635.427	3635	7450		7449.645	2.0

Source: Projected from 2015 Sierra Leone population and housing census data



Appendix 46 Males Abridged Life Table, Western Area Urban District 2015

Males Abridged Life Table, Western Area Urban District 2015									
Age	nM_x	na_x	nq_x	l_x	nd_x	nL_x	${}_5P_x$	T_x	e_x
0	0.027205	0.119	0.0266	100000	2657	97659	0.957894	6134017	61.3
1	0.009546	1.779	0.0374	97343.18	3640	381288	0.971369	6036358	62.0
5	0.002821	2.500	0.0140	93703.22	1313	465235	0.986289	5655070	60.4
10	0.0027	2.500	0.0134	92390.65	1239	458856	0.986439	5189835	56.2
15	0.002761	2.500	0.0137	91151.62	1250	452633	0.985876	4730980	51.9
20	0.002929	2.500	0.0145	89901.71	1307	446240	0.983037	4278346	47.6
25	0.003922	2.500	0.0194	88594.47	1721	438671	0.973966	3832106	43.3
30	0.006665	2.500	0.0328	86873.91	2848	427251	0.964304	3393435	39.1
35	0.007895	2.500	0.0387	84026.33	3253	411999	0.95808	2966184	35.3
40	0.009261	2.500	0.0453	80773.4	3655	394728	0.949742	2554185	31.6
45	0.011416	2.500	0.0555	77117.96	4280	374890	0.931014	2159457	28.0
50	0.017377	2.500	0.0833	72838.04	6065	349028	0.917762	1784567	24.5
55	0.016909	2.500	0.0811	66773.07	5416	320324	0.891942	1435539	21.5
60	0.029502	2.500	0.1374	61356.65	8429	285711	0.84802	1115214	18.2
65	0.036897	2.500	0.1689	52927.59	8940	242288	0.811837	829503.8	15.7
70	0.047261	2.500	0.2113	43987.77	9296	196699	0.773513	587215.4	13.3
75	0.056022	2.500	0.2457	34691.66	8524	152149	0.723102	390516.8	11.3
80	0.075697	2.500	0.3183	26167.91	8328	110019	0.62723	238367.9	9.1
85	0.11704	2.500	0.4527	17839.77	8077	69007	0.537455	128348.7	7.2
90	0.126482	2.500	0.4805	9763.174	4691	37088	0.472554	59341.36	6.1
95	0.178808	2.500	0.6178	5072.159	3134	17526	0.212412	22253.03	4.4
100	0.410072	2.439	1.0000	1938.331	1938	4727		4726.807	2.4

Source: Projected from 2015 Sierra Leone population and housing census data



Appendix 47 Females Abridged Life Table, Western Area Urban District 2015

Females Abridged Life Table, Western Area Urban District 2015									
Age	nM_x	na_x	nq_x	l_x	nd_x	nL_x	${}_5P_x$	T_x	e_x
0	0.024501	0.122	0.0240	100000	2398	97894	0.961424	6510759	65.1
1	0.008596	1.694	0.0337	97601.54	3291	382818	0.974042	6412865	65.7
5	0.002837	2.500	0.0141	94310.87	1328	468233	0.989124	6030047	63.9
10	0.00153	2.500	0.0076	92982.52	709	463141	0.99034	5561814	59.8
15	0.002357	2.500	0.0117	92273.86	1081	458667	0.985105	5098673	55.3
20	0.003656	2.500	0.0181	91192.99	1652	451835	0.977561	4640006	50.9
25	0.005442	2.500	0.0268	89541.08	2404	441697	0.96908	4188171	46.8
30	0.007147	2.500	0.0351	87137.57	3059	428039	0.961749	3746474	43.0
35	0.008477	2.500	0.0415	84078.22	3490	411667	0.953977	3318435	39.5
40	0.010411	2.500	0.0507	80588.47	4089	392720	0.949906	2906768	36.1
45	0.010134	2.500	0.0494	76499.72	3781	373047	0.946232	2514047	32.9
50	0.012019	2.500	0.0583	72719.22	4243	352989	0.938983	2141000	29.4
55	0.013193	2.500	0.0639	68476.56	4373	331451	0.922316	1788011	26.1
60	0.019387	2.500	0.0925	64103.85	5927	305702	0.903691	1456560	22.7
65	0.021176	2.500	0.1006	58177.14	5850	276260	0.882435	1150857	19.8
70	0.029294	2.500	0.1365	52327.04	7141	243782	0.860686	874596.6	16.7
75	0.03071	2.500	0.1426	45185.71	6444	209820	0.806418	630814.8	14.0
80	0.057939	2.500	0.2530	38742.11	9803	169202	0.713593	420995.2	10.9
85	0.079351	2.500	0.3311	28938.76	9581	120741	0.645131	251793.1	8.7
90	0.09703	2.500	0.3904	19357.83	7558	77894	0.552347	131051.6	6.8
95	0.148515	2.500	0.5415	11799.79	6390	43025	0.190623	53157.55	4.5
100	0.533898	1.873	1.0000	5410.013	5410	10133		10133.04	1.9

Source: Projected from 2015 Sierra Leone population and housing census data

Life Tables at National Level and Region Levels



Appendix 48 Both Sexes Abridged Life Table, Sierra Leone 2015

Both Sexes Abridged Life Table, Sierra Leone 2015									
Age	nM_x	na_x	nq_x	l_x	nd_x	nL_x	${}_5P_x$	T_x	e_x
0	0.0504	0.189	0.0484	100000	4844	96069	0.91929	4952753	49.5
1	0.0202	1.684	0.0774	95156.15	7361	363575	0.94376	4856683	51.0
5	0.0048	2.500	0.0236	87795.59	2074	433792	0.97805	4493108	51.2
10	0.0041	2.500	0.0202	85721.23	1734	424271	0.97605	4059316	47.4
15	0.0056	2.500	0.0278	83987.31	2331	414109	0.96810	3635045	43.3
20	0.0074	2.500	0.0362	81656.21	2954	400897	0.95713	3220936	39.4
25	0.0102	2.500	0.0498	78702.47	3921	383711	0.94389	2820039	35.8
30	0.0130	2.500	0.0627	74781.86	4691	362182	0.93633	2436328	32.6
35	0.0134	2.500	0.0647	70090.96	4533	339123	0.92356	2074146	29.6
40	0.0186	2.500	0.0890	65558.11	5836	313200	0.91077	1735024	26.5
45	0.0187	2.500	0.0895	59721.81	5343	285251	0.89347	1421824	23.8
50	0.0267	2.500	0.1253	54378.71	6812	254864	0.87960	1136572	20.9
55	0.0244	2.500	0.1148	47566.75	5462	224179	0.84955	881708.8	18.5
60	0.0422	2.500	0.1907	42104.69	8029	190452	0.81622	657530.2	15.6
65	0.0384	2.500	0.1752	34075.94	5972	155451	0.77440	467078.6	13.7
70	0.0669	2.500	0.2866	28104.3	8056	120381	0.71182	311628	11.1
75	0.0679	2.500	0.2903	20048.24	5820	85690	0.64455	191246.6	9.5
80	0.1152	2.500	0.4472	14227.77	6363	55231	0.54247	105556.6	7.4
85	0.1250	2.500	0.4762	7864.807	3745	29962	0.47950	50325.15	6.4
90	0.1735	2.500	0.6051	4119.841	2493	14367	0.36438	20363.53	4.9
95	0.2215	2.500	0.7128	1626.806	1160	5235	0.12707	5996.914	3.7
100	0.6131	1.631	1.0000	467.1606	467	762		761.9973	1.6

Source: Projected from 2015 Sierra Leone population and housing census data



Appendix 49 Males Abridged Life Table, Sierra Leone 2015

Males Abridged Life Table, Sierra Leone 2015									
Age	nM_x	na_x	nq_x	l_x	nd_x	nL_x	${}_5P_x$	T_x	e_x
0	0.053278	0.189	0.0511	100000	5107	95860	0.915094	4830993	48.3
1	0.021546	1.705	0.0821	94892.8	7793	361687	0.940104	4735133	49.9
5	0.004982	2.500	0.0246	87099.9	2143	430142	0.976827	4373445	50.2
10	0.004389	2.500	0.0217	84956.82	1844	420174	0.975495	3943304	46.4
15	0.005549	2.500	0.0274	83112.82	2274	409878	0.9685	3523130	42.4
20	0.00728	2.500	0.0358	80838.34	2890	396967	0.9583	3113252	38.5
25	0.009809	2.500	0.0479	77948.32	3731	380413	0.946068	2716285	34.8
30	0.012435	2.500	0.0603	74216.99	4475	359897	0.932917	2335872	31.5
35	0.015434	2.500	0.0743	69741.75	5182	335754	0.921545	1975975	28.3
40	0.017306	2.500	0.0829	64559.76	5355	309412	0.907071	1640221	25.4
45	0.021901	2.500	0.1038	59205.13	6147	280659	0.890766	1330809	22.5
50	0.024465	2.500	0.1153	53058.41	6116	250001	0.866612	1050150	19.8
55	0.033337	2.500	0.1539	46942.13	7223	216654	0.836305	800148.7	17.0
60	0.038432	2.500	0.1753	39719.51	6963	181189	0.79426	583494.6	14.7
65	0.055226	2.500	0.2426	32756.08	7948	143911	0.742278	402305.6	12.3
70	0.064481	2.500	0.2776	24808.41	6888	106822	0.679197	258394.4	10.4
75	0.093994	2.500	0.3805	17920.43	6820	72553	0.596911	151572.3	8.5
80	0.112649	2.500	0.4395	11100.86	4879	43308	0.519446	79019.04	7.1
85	0.153188	2.500	0.5538	6222.282	3446	22496	0.422744	35711.2	5.7
90	0.183834	2.500	0.6297	2776.155	1748	9510	0.341093	13215.11	4.8
95	0.233747	2.500	0.7377	1027.881	758	3244	0.124479	3705.021	3.6
100	0.58467	1.710	1.0000	269.6482	270	461		461.197	1.7

Source: Projected from 2015 Sierra Leone population and housing census data



Appendix 50 Females Abridged Life Table, Sierra Leone 2015

Females Abridged Life Table, Sierra Leone 2015									
Age	nM_x	na_x	nq_x	l_x	nd_x	nL_x	${}_5P_x$	T_x	e_x
0	0.047548	0.187	0.0458	100000	4578	96280	0.923509	5080537	50.8
1	0.018946	1.659	0.0726	95422.1	6924	365475	0.947425	4984257	52.2
5	0.004581	2.500	0.0226	88497.64	2004	437478	0.979309	4618782	52.2
10	0.003774	2.500	0.0187	86493.58	1617	428426	0.976482	4181304	48.3
15	0.005769	2.500	0.0284	84876.87	2414	418350	0.966793	3752878	44.2
20	0.007771	2.500	0.0381	82463.26	3143	404458	0.955549	3334528	40.4
25	0.010475	2.500	0.0510	79320.05	4048	386480	0.944169	2930069	36.9
30	0.012559	2.500	0.0609	75271.84	4583	364902	0.938723	2543590	33.8
35	0.012732	2.500	0.0617	70688.96	4361	342542	0.925813	2178688	30.8
40	0.018301	2.500	0.0875	66327.85	5804	317130	0.912041	1836146	27.7
45	0.018511	2.500	0.0885	60524.14	5354	289235	0.898186	1519016	25.1
50	0.024732	2.500	0.1165	55170.05	6425	259787	0.889272	1229780	22.3
55	0.021994	2.500	0.1042	48744.9	5081	231022	0.865133	969992.7	19.9
60	0.036933	2.500	0.1691	43663.73	7382	199864	0.837918	738971.2	16.9
65	0.033296	2.500	0.1537	36282.04	5576	167470	0.802593	539106.8	14.9
70	0.056899	2.500	0.2491	30706	7648	134410	0.746592	371636.7	12.1
75	0.059556	2.500	0.2592	23058.16	5976	100350	0.67996	237226.3	10.3
80	0.100682	2.500	0.4022	17081.74	6870	68234	0.579357	136876.5	8.0
85	0.116638	2.500	0.4515	10211.8	4611	39532	0.506734	68642.68	6.7
90	0.159193	2.500	0.5694	5600.909	3189	20032	0.394602	29110.9	5.2
95	0.210253	2.500	0.6891	2411.933	1662	7905	0.129323	9078.799	3.8
100	0.638743	1.566	1.0000	749.9472	750	1174		1174.098	1.6

Source: Projected from 2015 Sierra Leone population and housing census data



Appendix 51 Both Sexes Abridged Life Table, Sierra Leone Rural 2015

Both Sexes Abridged Life Table, Sierra Leone Rural 2015									
Age	nM_x	na_x	nq_x	l_x	nd_x	nL_x	${}_5P_x$	T_x	e_x
0	0.0566	0.212	0.0542	100000	5416	95735	0.91061	4824603	48.2
1	0.0222	1.645	0.0842	94584.31	7968	359572	0.93951	4728868	50.0
5	0.0050	2.500	0.0246	86616.48	2127	427765	0.97665	4369295	50.4
10	0.0045	2.500	0.0221	84489.57	1869	417775	0.97359	3941530	46.7
15	0.0063	2.500	0.0308	82620.37	2544	406742	0.96384	3523756	42.6
20	0.0085	2.500	0.0417	80076.24	3339	392034	0.95170	3117014	38.9
25	0.0114	2.500	0.0552	76737.51	4236	373097	0.93887	2724980	35.5
30	0.0140	2.500	0.0674	72501.41	4887	350289	0.93435	2351882	32.4
35	0.0132	2.500	0.0638	67614.24	4311	327293	0.92265	2001593	29.6
40	0.0193	2.500	0.0919	63302.8	5815	301976	0.91013	1674301	26.4
45	0.0183	2.500	0.0877	57487.55	5040	274838	0.89184	1372325	23.9
50	0.0279	2.500	0.1306	52447.81	6851	245112	0.87758	1097486	20.9
55	0.0240	2.500	0.1130	45596.96	5152	215104	0.85110	852374.4	18.7
60	0.0418	2.500	0.1894	40444.69	7659	183075	0.81980	637270.3	15.8
65	0.0369	2.500	0.1689	32785.39	5536	150086	0.77782	454195.1	13.9
70	0.0668	2.500	0.2863	27248.93	7802	116740	0.71449	304109.3	11.2
75	0.0663	2.500	0.2844	19446.94	5530	83409	0.64679	187369.6	9.6
80	0.1159	2.500	0.4494	13916.76	6254	53948	0.54540	103960.3	7.5
85	0.1208	2.500	0.4640	7662.473	3556	29423	0.48881	50012.24	6.5
90	0.1711	2.500	0.5992	4106.833	2461	14382	0.37363	20588.98	5.0
95	0.2127	2.500	0.6942	1646.107	1143	5374	0.13421	6206.629	3.8
100	0.6043	1.655	1.0000	503.3506	503	833		832.9851	1.7

Source: Projected from 2015 Sierra Leone population and housing census data



Appendix 52 Both Sexes Abridged Life Table, Sierra Leone Urban 2015

Both Sexes Abridged Life Table, Sierra Leone Urban 2015									
Age	nM_x	na_x	nq_x	l_x	nd_x	nL_x	${}_5P_x$	T_x	e_x
0	0.040669	0.168	0.0393	100000	3934	96727	0.933397	5149457	51.5
1	0.016574	1.669	0.0638	96066.23	6132	369972	0.953001	5052730	52.6
5	0.004414	2.500	0.0218	89934.37	1963	444764	0.980309	4682759	52.1
10	0.003532	2.500	0.0175	87971.31	1540	436006	0.979308	4237994	48.2
15	0.004845	2.500	0.0239	86431.27	2069	426985	0.972747	3801988	44.0
20	0.006226	2.500	0.0307	84362.65	2586	415348	0.96291	3375003	40.0
25	0.008942	2.500	0.0437	81776.69	3576	399943	0.949875	2959655	36.2
30	0.011694	2.500	0.0568	78200.49	4443	379896	0.938783	2559712	32.7
35	0.013626	2.500	0.0659	73757.82	4860	356640	0.924899	2179816	29.6
40	0.017747	2.500	0.0850	68898.12	5854	329856	0.911628	1823176	26.5
45	0.019308	2.500	0.0921	63044.22	5806	300706	0.895878	1493320	23.7
50	0.024937	2.500	0.1174	57238.09	6718	269396	0.882629	1192615	20.8
55	0.024939	2.500	0.1174	50520.22	5930	237777	0.847168	923218.9	18.3
60	0.042724	2.500	0.1930	44590.39	8606	201437	0.810314	685442.4	15.4
65	0.040911	2.500	0.1856	35984.24	6678	163227	0.768762	484005.8	13.5
70	0.067101	2.500	0.2873	29306.53	8420	125483	0.706621	320778.9	10.9
75	0.071114	2.500	0.3019	20886.52	6306	88669	0.640606	195296.3	9.4
80	0.113399	2.500	0.4418	14580.95	6441	56802	0.536902	106627.6	7.3
85	0.133806	2.500	0.5013	8139.72	4081	30497	0.4585	49825.9	6.1
90	0.180577	2.500	0.6221	4059.058	2525	13983	0.340529	19328.95	4.8
95	0.244358	2.500	0.7585	1534.077	1164	4762	0.109341	5346.113	3.5
100	0.633903	1.578	1.0000	370.5484	371	585		584.5505	1.6

Source: Projected from 2015 Sierra Leone population and housing census data



Appendix 53 Both Sexes Abridged Life Table, Probability of Dying

Both Sexes Abridged Life Table, Probability of Dying				
Age	nM_x	$5*nM_x$	$1+0.5*5*nM_x$	Prob.
0	0.0504	0.2521	1.1261	0.2239
1	0.0202	0.1012	1.0506	0.0963
5	0.0048	0.0239	1.0120	0.0236
10	0.0041	0.0204	1.0102	0.0202
15	0.0056	0.0281	1.0141	0.0278
20	0.0074	0.0368	1.0184	0.0362
25	0.0102	0.0511	1.0255	0.0498
30	0.0130	0.0648	1.0324	0.0627
35	0.0134	0.0668	1.0334	0.0647
40	0.0186	0.0932	1.0466	0.0890
45	0.0187	0.0937	1.0468	0.0895
50	0.0267	0.1336	1.0668	0.1253
55	0.0244	0.1218	1.0609	0.1148
60	0.0422	0.2108	1.1054	0.1907
65	0.0384	0.1921	1.0960	0.1752
70	0.0669	0.3346	1.1673	0.2866
75	0.0679	0.3396	1.1698	0.2903
80	0.1152	0.5760	1.2880	0.4472
85	0.1250	0.6250	1.3125	0.4762
90	0.1735	0.8677	1.4338	0.6051
95	0.2215	1.1076	1.5538	0.7128
100	0.6131	3.0654	2.5327	1.2103

Source: Projected from 2015 Sierra Leone population and housing census data



Appendix 54 Males Abridged Life Table, Probability of Dying

Males Abridged Life Table, Probability of Dying				
Age	nM_x	$5*nM_x$	$1+0.5*5*nM_x$	Prob.
0	0.053278	0.266389	1.133195	0.235078
1	0.021546	0.10773	1.053865	0.102223
5	0.004982	0.024911	1.012456	0.024605
10	0.004389	0.021943	1.010972	0.021705
15	0.005549	0.027746	1.013873	0.027366
20	0.00728	0.036401	1.018201	0.035751
25	0.009809	0.049043	1.024522	0.047869
30	0.012435	0.062174	1.031087	0.060299
35	0.015434	0.077169	1.038585	0.074303
40	0.017306	0.086529	1.043265	0.082941
45	0.021901	0.109505	1.054753	0.103821
50	0.024465	0.122325	1.061162	0.115274
55	0.033337	0.166686	1.083343	0.153862
60	0.038432	0.192159	1.09608	0.175315
65	0.055226	0.276131	1.138066	0.242632
70	0.064481	0.322404	1.161202	0.277647
75	0.093994	0.469971	1.234985	0.380548
80	0.112649	0.563244	1.281622	0.439477
85	0.153188	0.765939	1.38297	0.553837
90	0.183834	0.919168	1.459584	0.629746
95	0.233747	1.168734	1.584367	0.737666
100	0.58467	2.923351	2.461676	1.187545

Source: Projected from 2015 Sierra Leone population and housing census data



Appendix 55 Females Abridged Life Table, Probability of Dying

Females Abridged Life Table, Probability of Dying				
Age	nM_x	$5*nM_x$	$1+0.5*5*nM_x$	Prob.
0	0.047548	0.237739	1.11887	0.212482
1	0.018946	0.094732	1.047366	0.090448
5	0.004581	0.022905	1.011452	0.022645
10	0.003774	0.018868	1.009434	0.018692
15	0.005769	0.028847	1.014423	0.028437
20	0.007771	0.038857	1.019428	0.038116
25	0.010475	0.052373	1.026186	0.051036
30	0.012559	0.062796	1.031398	0.060884
35	0.012732	0.063658	1.031829	0.061694
40	0.018301	0.091504	1.045752	0.0875
45	0.018511	0.092556	1.046278	0.088462
50	0.024732	0.123662	1.061831	0.116461
55	0.021994	0.109972	1.054986	0.10424
60	0.036933	0.184667	1.092334	0.169058
65	0.033296	0.166479	1.083239	0.153686
70	0.056899	0.284496	1.142248	0.249067
75	0.059556	0.297779	1.14889	0.259189
80	0.100682	0.503411	1.251706	0.40218
85	0.116638	0.583188	1.291594	0.451526
90	0.159193	0.795966	1.397983	0.569368
95	0.210253	1.051264	1.525632	0.689068
100	0.638743	3.193717	2.596859	1.229839

Source: Projected from 2015 Sierra Leone population and housing census data

After knowing the life expectancy at age 15 and 60, it is prudent to calculate the probability of dying between these ages.

Where a = proportion distribution of death in interval. Assuming this value this value is 0.5 (evenly distributed). Note that the probability of dying for the late age group (age 85+) is equal to 1.0000.

From Table 3.1. It reveals as follows:

$${}^5q_0 = \frac{(5)(0.0504)}{1+[(0.5)(5)(0.0504)]} = 0.2238010$$

$${}^5q_{15} = \frac{(5)(0.0056)}{1+[(0.5)(5)(0.0056)]} = 0.0276134$$

$${}^5q_{60} = \frac{(5)(0.0422)}{1+[(0.5)(5)(0.0422)]} = 0.1908638$$

Age-specific death rates:

$${}^nM_x = \frac{{}^nD_x}{{}^np_x}$$

Where n = width of interval = 5 and X = age at beginning of interval. Table 3. Reveals as follows: (refer to Life Table for Sierra Leone Females, 2015 using the abridged age of 15 & 60):

$${}^5M_0 = \frac{{}^5D_0}{{}^5P_0} = \frac{4578}{87104} = 0.0525578$$

$${}^5M_{15} = \frac{{}^5D_{15}}{{}^5P_{15}} = \frac{4578}{87104} = 0.0197630$$

$${}^5M_{60} = \frac{{}^5D_{60}}{{}^5P_{60}} = \frac{4578}{87104} = 0.1721508$$

Probability of dying between age 15 & 60 using abridged life tables for Sierra Leone:

$$nq_x = \frac{(n)nM_x}{1+[(a)(n) nM_x]}$$

Number dying during age interval (radix = 100,000)

$$nd_x = nq_x (l_x)$$

Table 3.1. Reveals as follows:

$$5d_0 = 0.0484(100,000) = 4,840$$

$$5d_{15} = 0.0278(100,000) = 2,780$$

$$5d_{60} = 0.1907(100,000) = 1,907$$

Number alive at beginning of interval between age 15 & 60 referencing from Table 3.1.

$$l_{x+n} = (l_x - nd_x)$$

Calculating from Table 3.1. Reveals:

$$l_{0+5} = 100,000 - 4,840 = 95,160$$

$$l_{15+5} = 83,987 - 2,780 = 81,207$$

$$l_{60+5} = 42,104 - 1,907 = 40,197$$

Number of years lived in the interval between age 15 & 60: from Table 3.1. It was also revealed thus:

$$nL_x = n[l_x - (a)(nd_x)]$$

$$5L_0 = 5[100,000 - (0.5)(4,840)] = 487,900$$

$$5L_{15} = 5[100,000 - (0.5)(2,780)] = 493,050$$

$$5L_{60} = 5[100,000 - (0.5)(1,907)] = 495,233$$

Note: $L_{85} = l_{85}/M_{85} = 7,864/0.1250 = 62,912$

Number of years lived in this and all subsequent age intervals:

$$T_x = T_{x+n} + nL_x$$

Referencing Table 3.1.

$$T_{85} = 0 + 62,912 = 62,912$$

$$T_{15} = 3,635,045 + 414,109 = 4,049,154$$

$$T_{60} = 657,530 + 190,452 = 847,982$$

Average number of years of life remaining at beginning of age interval using the abridged life table 3.1:

$$e_x = \frac{T_x}{L_x}$$

This means that;

$$e_0 = \frac{T_0}{L_0} = 4,952,753/100,000 = 49.52753 \approx 49.5 \text{ which is the current life expectancy for people living in Sierra Leone.}$$

$$e_{15} = \frac{T_{15}}{L_{15}} = \frac{3,635,045}{83,987} = 43.2810 \approx 43.3$$

$$e_{60} = \frac{T_{60}}{L_{60}} = \frac{657,530}{42,104} = 15.616 \approx 15.6$$

